

Recombinant Human LSAMP Protein

Catalog #	Source	Reactivity	Applications
CRP1918	Human cells	Human	E, WB, SDS-PAGE, MS
Description	Recombinant Human LSAMP Protein is produced by our mammalian expression system and the target gene encoding Val29-Asn315 is expressed with a 6His tag at the C-terminus.		
Form	Lyophilized from a 0.2 μM filtered solution of 20mM PB, 150mM NaCl, pH 7.4.		
Gene Symbol	LSAMP		
Alternative Names	IGLON3; LAMP; Limbic system-associated membrane protein; LSAMP; IgLON family member 3		
Entrez Gene	4045 (Human)		
SwissProt	Q13449 (Human)		
Purity	Greater than 95% as determined by reducing SDS-PAGE.		
Chemical Structure	<p>VRSVDFNRGT DNITVRQGDT AILRCVVEDK NSKVAWLNRS GIIFAGHDKW SLDPRVELEK RHSLEYSRLI QKVDVYDEGS YTCSVQTQHE PKTSQVYLIV QVPPKISNIS SDVTVNEGSN VTLVCMANGR PEPVITWRHL TPTGREFEGE EEYLEILGIT REQSGKYECK AANEVSSADV KQVKVTVNYP PTITESKSNE ATTGRQASLK CEASAVPAPD FEWYRDDTRI NSANGLEIKS TEGQSSLTVT NVTEEHYGN Y TCVAANKLGV TNASLVLF RP GSVRGINVDH HHHHH</p>		
Quality Control	Endotoxin: Less than 0.1 ng/μg (1 IEU/μg) as determined by LAL test.		
Directions for Use	Always centrifuge tubes before opening. Do not mix by vortex or pipetting. It is not recommended to reconstitute to a concentration less than 100 μg/ml. Dissolve the lyophilized protein in 1X PBS. Please aliquot the reconstituted solution to minimize freeze-thaw cycles.		
Storage/Stability	Lyophilized protein should be stored at -20°C, though stable at room temperature		
Application key:	E- ELISA, WB- Western blot, IH- Immunohistochemistry, IF- Immunofluorescence, FC- Flow cytometry, IC- Immunocytochemistry, IP- Immunoprecipitation, ChIP- Chromatin Immunoprecipitation, EMSA- Electrophoretic Mobility Shift Assay, BL- Blocking, SE- Sandwich ELISA, CBE- Cell-based ELISA, RNAi- RNA interference		
Species reactivity key:	H- Human, M- Mouse, R- Rat, B- Bovine, C- Chicken, D- Dog, G- Goat, Mk- Monkey, P- Pig, Rb- Rabbit, S- Sheep, Z- Zebrafish		

COHESION BIOSCIENCES LIMITED

WEB
www.cohesionbio.com

ORDER
order@cohesionbio.com

SUPPORT
techsupport@cohesionbio.com

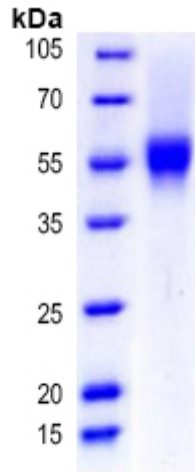
CUSTOM
custom@cohesionbio.com

Product Data Sheet

for 3 weeks. Reconstituted protein solution can be stored at 2-8°C for 2-7 days.

Aliquots of reconstituted samples are stable at -20°C for 3 months.

SDS-PAGE



Application key: E- ELISA, WB- Western blot, IH- Immunohistochemistry, IF- Immunofluorescence, FC- Flow cytometry, IC- Immunocytochemistry, IP- Immunoprecipitation, ChIP- Chromatin Immunoprecipitation, EMSA- Electrophoretic Mobility Shift Assay, BL- Blocking, SE- Sandwich ELISA, CBE- Cell-based ELISA, RNAi- RNA interference

Species reactivity key: H- Human, M- Mouse, R- Rat, B- Bovine, C- Chicken, D- Dog, G- Goat, Mk- Monkey, P- Pig, Rb- Rabbit, S- Sheep, Z- Zebrafish

COHESION BIOSCIENCES LIMITED

WEB

www.cohesionbio.com

ORDER

order@cohesionbio.com

SUPPORT

techsupport@cohesionbio.com

CUSTOM

custom@cohesionbio.com