

Anti-RBCK1 Antibody

| Catalog # | Source | Reactivity | Applications |
|--------------------------|---|------------|--------------|
| CQA9492 | Mouse | H | WB |
| Description | Mouse monoclonal antibody to RBCK1 | | |
| Immunogen | Recombinant fusion protein of human RBCK1. The exact sequence is proprietary. | | |
| Purification | This antibody is purified through a protein G column. | | |
| Specificity | Recognizes endogenous levels of RBCK1 | | |
| Clonality | Monoclonal | | |
| Conjugation | | | |
| Form | Mouse IgG1 kappa. Liquid in PBS, pH 7.3, 30% glycerol, and 0.01% sodium azide. | | |
| Dilution | WB (1/500 - 1/1000) | | |
| Gene Symbol | RBCK1 | | |
| Alternative Names | C20orf18; RNF54; UBCE7IP3; XAP3; XAP4; RanBP-type and C3HC4-type zinc finger-containing protein 1; HBV-associated factor 4; Heme-oxidized IRP2 ubiquitin ligase 1; HOIL-1; Hepatitis B virus X-associated protein 4; RING finger protein 54; Ubiquitin-conjugat | | |
| Entrez Gene | 10616 (Human) | | |
| SwissProt | Q9BYM8 (Human) | | |
| Storage/Stability | Shipped at 4°C. Upon delivery aliquot and store at -20°C for one year. Avoid freeze/thaw cycles. | | |

Application key: E- ELISA, WB- Western blot, IH- Immunohistochemistry, IF- Immunofluorescence, FC- Flow cytometry, IC- Immunocytochemistry, IP- Immunoprecipitation, CHIP- Chromatin Immunoprecipitation, EMSA- Electrophoretic Mobility Shift Assay, BL- Blocking, SE- Sandwich ELISA, CBE- Cell-based ELISA, RNAi- RNA interference

Species reactivity key: H- Human, M- Mouse, R- Rat, B- Bovine, C- Chicken, D- Dog, G- Goat, Mk- Monkey, P- Pig, Rb- Rabbit, S- Sheep, Z- Zebrafish

COHESION BIOSCIENCES LIMITED

WEB

www.cohesionbio.com

ORDER

order@cohesionbio.com

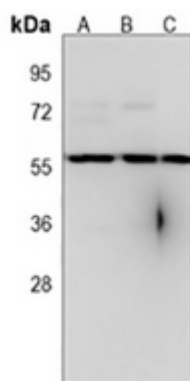
SUPPORT

techsupport@cohesionbio.com

CUSTOM

custom@cohesionbio.com

Product Data Sheet



Western blot analysis of RBCK1 expression in Jurkat (A), 293 (B), A375 (C) whole cell lysates. (Predicted band size: 57 kD; Observed band size: 58 kD)

Application key: E- ELISA, WB- Western blot, IH- Immunohistochemistry, IF- Immunofluorescence, FC- Flow cytometry, IC- Immunocytochemistry, IP- Immunoprecipitation, CHIP- Chromatin Immunoprecipitation, EMSA- Electrophoretic Mobility Shift Assay, BL- Blocking, SE- Sandwich ELISA, CBE- Cell-based ELISA, RNAi- RNA interference

Species reactivity key: H- Human, M- Mouse, R- Rat, B- Bovine, C- Chicken, D- Dog, G- Goat, Mk- Monkey, P- Pig, Rb- Rabbit, S- Sheep, Z- Zebrafish

COHESION BIOSCIENCES LIMITED

WEB

www.cohesionbio.com

ORDER

order@cohesionbio.com

SUPPORT

techsupport@cohesionbio.com

CUSTOM

custom@cohesionbio.com