

Anti-NR2C2 Antibody

Catalog #	Source	Reactivity	Applications
CQA9291	Mouse	H, M, R	WB
Description	Mouse monoclonal antibody to NR2C2		
Immunogen	KLH-conjugated synthetic peptide of human NR2C2. The exact sequence is proprietary.		
Purification	This antibody is purified through a protein G column.		
Specificity	Recognizes endogenous levels of NR2C2 protein.		
Clonality	Monoclonal		
Conjugation			
Form	Mouse IgG2b kappa. Liquid in PBS, pH 7.3, 30% glycerol, and 0.01% sodium azide.		
Dilution	WB (1/500 - 1/1000)		
Gene Symbol	NR2C2		
Alternative Names	TAK1; TR4; Nuclear receptor subfamily 2 group C member 2; Orphan nuclear receptor TAK1; Orphan nuclear receptor TR4; Testicular receptor 4		
Entrez Gene	7182 (Human); 22026 (Mouse); 50659 (Rat)		
SwissProt	P49116 (Human); P49117 (Mouse); P55094 (Rat)		
Storage/Stability	Shipped at 4°C. Upon delivery aliquot and store at -20°C for one year. Avoid freeze/thaw cycles.		

Application key: E- ELISA, WB- Western blot, IH- Immunohistochemistry, IF- Immunofluorescence, FC- Flow cytometry, IC- Immunocytochemistry, IP- Immunoprecipitation, CHIP- Chromatin Immunoprecipitation, EMSA- Electrophoretic Mobility Shift Assay, BL- Blocking, SE- Sandwich ELISA, CBE- Cell-based ELISA, RNAi- RNA interference

Species reactivity key: H- Human, M- Mouse, R- Rat, B- Bovine, C- Chicken, D- Dog, G- Goat, Mk- Monkey, P- Pig, Rb- Rabbit, S- Sheep, Z- Zebrafish

COHESION BIOSCIENCES LIMITED

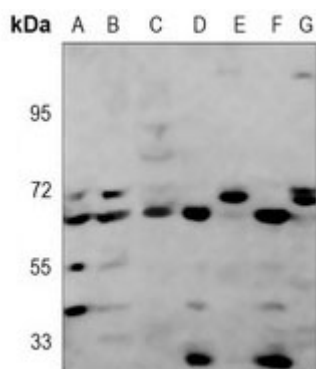
WEB
www.cohesionbio.com

ORDER
order@cohesionbio.com

SUPPORT
techsupport@cohesionbio.com

CUSTOM
custom@cohesionbio.com

Product Data Sheet



Western blot analysis of NR2C2 expression in PC3 (A), Jurkat (B), MoLT4 (C), F9 (D), NIH3T3 (E), PC12 (F), CHO (G) whole cell lysates. (Predicted band size: 65 kD; Observed band size: 65 kD)

Application key: E- ELISA, WB- Western blot, IH- Immunohistochemistry, IF- Immunofluorescence, FC- Flow cytometry, IC- Immunocytochemistry, IP- Immunoprecipitation, CHIP- Chromatin Immunoprecipitation, EMSA- Electrophoretic Mobility Shift Assay, BL- Blocking, SE- Sandwich ELISA, CBE- Cell-based ELISA, RNAi- RNA interference

Species reactivity key: H- Human, M- Mouse, R- Rat, B- Bovine, C- Chicken, D- Dog, G- Goat, Mk- Monkey, P- Pig, Rb- Rabbit, S- Sheep, Z- Zebrafish

COHESION BIOSCIENCES LIMITED

WEB

www.cohesionbio.com

ORDER

order@cohesionbio.com

SUPPORT

techsupport@cohesionbio.com

CUSTOM

custom@cohesionbio.com