

Anti-TSSK3 Antibody

| Catalog # | Source | Reactivity | Applications |
|--------------------------|---|------------|--------------|
| CQA6314 | Rabbit | M, R | WB |
| Description | Rabbit polyclonal antibody to TSSK3 | | |
| Immunogen | Recombinant fusion protein of human TSSK3. The exact sequence is proprietary. | | |
| Purification | The antibody was purified by immunogen affinity chromatography. | | |
| Specificity | Recognizes endogenous levels of TSSK3 protein | | |
| Clonality | Polyclonal | | |
| Conjugation | | | |
| Form | Liquid in 0.42% Potassium phosphate, 0.87% Sodium chloride, pH 7.3, 30% glycerol, and 0.01% sodium azide. | | |
| Dilution | WB (1/500 - 1/2000) | | |
| Gene Symbol | TSSK3 | | |
| Alternative Names | SPOGA3; STK22C; Testis-specific serine/threonine-protein kinase 3; TSK-3; TSSK-3; Testis-specific kinase 3; Serine/threonine-protein kinase 22C | | |
| Entrez Gene | 81629 (Human); 58864 (Mouse) | | |
| SwissProt | Q96PN8 (Human); Q9D2E1 (Mouse) | | |
| Storage/Stability | Shipped at 4°C. Upon delivery aliquot and store at -20°C for one year. Avoid freeze/thaw cycles. | | |

Application key: E- ELISA, WB- Western blot, IH- Immunohistochemistry, IF- Immunofluorescence, FC- Flow cytometry, IC- Immunocytochemistry, IP- Immunoprecipitation, CHIP- Chromatin Immunoprecipitation, EMSA- Electrophoretic Mobility Shift Assay, BL- Blocking, SE- Sandwich ELISA, CBE- Cell-based ELISA, RNAi- RNA interference

Species reactivity key: H- Human, M- Mouse, R- Rat, B- Bovine, C- Chicken, D- Dog, G- Goat, Mk- Monkey, P- Pig, Rb- Rabbit, S- Sheep, Z- Zebrafish

COHESION BIOSCIENCES LIMITED

WEB

www.cohesionbio.com

ORDER

order@cohesionbio.com

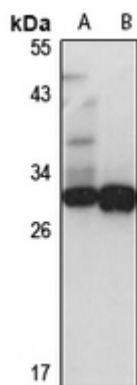
SUPPORT

techsupport@cohesionbio.com

CUSTOM

custom@cohesionbio.com

Product Data Sheet



Western blot analysis of TSSK3 expression in mouse kidney (A), rat testis (B) whole cell lysates. (Predicted band size: 30 kD; Observed band size: 30 kD)

Application key: E- ELISA, WB- Western blot, IH- Immunohistochemistry, IF- Immunofluorescence, FC- Flow cytometry, IC- Immunocytochemistry, IP- Immunoprecipitation, CHIP- Chromatin Immunoprecipitation, EMSA- Electrophoretic Mobility Shift Assay, BL- Blocking, SE- Sandwich ELISA, CBE- Cell-based ELISA, RNAi- RNA interference

Species reactivity key: H- Human, M- Mouse, R- Rat, B- Bovine, C- Chicken, D- Dog, G- Goat, Mk- Monkey, P- Pig, Rb- Rabbit, S- Sheep, Z- Zebrafish

COHESION BIOSCIENCES LIMITED

WEB

www.cohesionbio.com

ORDER

order@cohesionbio.com

SUPPORT

techsupport@cohesionbio.com

CUSTOM

custom@cohesionbio.com