

Anti-PNKD Antibody

Catalog #	Source	Reactivity	Applications
CQA5518	Rabbit	H, M	WB, IF/IC
Description	Rabbit polyclonal antibody to PNKD		
Immunogen	Recombinant fusion protein of human PNKD. The exact sequence is proprietary.		
Purification	The antibody was purified by immunogen affinity chromatography.		
Specificity	Recognizes endogenous levels of PNKD protein		
Clonality	Polyclonal		
Conjugation			
Form	Liquid in 0.42% Potassium phosphate, 0.87% Sodium chloride, pH 7.3, 30% glycerol, and 0.01% sodium azide.		
Dilution	WB (1/500 - 1/2000), IF/IC (1/50 - 1/200)		
Gene Symbol	PNKD		
Alternative Names	KIAA1184; MR1; TAHCCP2; Probable hydrolase PNKD; Myofibrillogenesis regulator 1; MR-1; Paroxysmal nonkinesinogenic dyskinesia protein; Trans-activated by hepatitis C virus core protein 2		
Entrez Gene	25953 (Human); 56695 (Mouse)		
SwissProt	Q8N490 (Human); Q69ZP3 (Mouse)		
Storage/Stability	Shipped at 4°C. Upon delivery aliquot and store at -20°C for one year. Avoid freeze/thaw cycles.		

Application key: E- ELISA, WB- Western blot, IH- Immunohistochemistry, IF- Immunofluorescence, FC- Flow cytometry, IC- Immunocytochemistry, IP- Immunoprecipitation, CHIP- Chromatin Immunoprecipitation, EMSA- Electrophoretic Mobility Shift Assay, BL- Blocking, SE- Sandwich ELISA, CBE- Cell-based ELISA, RNAi- RNA interference

Species reactivity key: H- Human, M- Mouse, R- Rat, B- Bovine, C- Chicken, D- Dog, G- Goat, Mk- Monkey, P- Pig, Rb- Rabbit, S- Sheep, Z- Zebrafish

COHESION BIOSCIENCES LIMITED

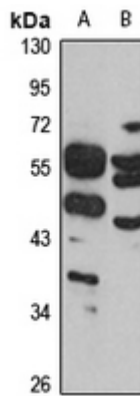
WEB
www.cohesionbio.com

ORDER
order@cohesionbio.com

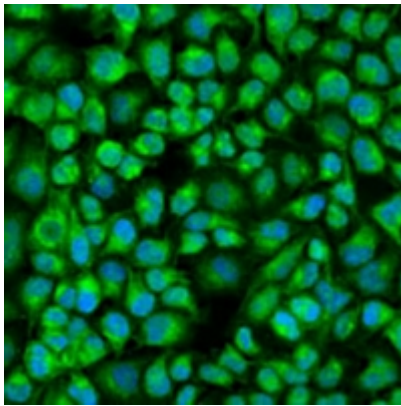
SUPPORT
techsupport@cohesionbio.com

CUSTOM
custom@cohesionbio.com

Product Data Sheet



Western blot analysis of PNKD expression in THP1 (A), mouse kidney (B) whole cell lysates. (Predicted band size: 15; 36; 40; 42 kD; Observed band size: 43 kD)



Immunofluorescent analysis of PNKD staining in U2OS cells. Formalin-fixed cells were permeabilized with 0.1% Triton X-100 in TBS for 5-10 minutes and blocked with 3% BSA-PBS for 30 minutes at room temperature. Cells were probed with the primary antibody in 3% BSA-PBS and incubated overnight at 4 °C in a humidified chamber. Cells were washed with PBST and incubated with a Alexa Fluor 488-conjugated secondary antibody (green) in PBS at room temperature in the dark.

Application key: E- ELISA, WB- Western blot, IH- Immunohistochemistry, IF- Immunofluorescence, FC- Flow cytometry, IC- Immunocytochemistry, IP- Immunoprecipitation, CHIP- Chromatin Immunoprecipitation, EMSA- Electrophoretic Mobility Shift Assay, BL- Blocking, SE- Sandwich ELISA, CBE- Cell-based ELISA, RNAi- RNA interference

Species reactivity key: H- Human, M- Mouse, R- Rat, B- Bovine, C- Chicken, D- Dog, G- Goat, Mk- Monkey, P- Pig, Rb- Rabbit, S- Sheep, Z- Zebrafish

COHESION BIOSCIENCES LIMITED

WEB

www.cohesionbio.com

ORDER

order@cohesionbio.com

SUPPORT

techsupport@cohesionbio.com

CUSTOM

custom@cohesionbio.com