

Anti-EGLN1/2 Antibody

Catalog #	Source	Reactivity	Applications
CQA4340	Rabbit	H, M, R	WB
Description	Rabbit polyclonal antibody to EGLN1/2		
Immunogen	KLH-conjugated synthetic peptide of human EGLN1/2. The exact sequence is proprietary.		
Purification	The antibody was purified by immunogen affinity chromatography.		
Specificity	Recognizes endogenous levels of EGLN1/2 protein		
Clonality	Polyclonal		
Conjugation			
Form	Liquid in 0.42% Potassium phosphate, 0.87% Sodium chloride, pH 7.3, 30% glycerol, and 0.01% sodium azide.		
Dilution	WB (1/500 - 1/1000)		
Gene Symbol	EGLN1; EGLN2		
Alternative Names	C1orf12; Egl nine homolog 1; Hypoxia-inducible factor prolyl hydroxylase 2; HIF-PH2; HIF-prolyl hydroxylase 2; HPH-2; Prolyl hydroxylase domain-containing protein 2; PHD2; SM-20; EIT6; Egl nine homolog 2; Estrogen-induced tag 6; HPH-3; Hypoxia-inducible f		
Entrez Gene	54583, 112398 (Human); 112405, 112406 (Mouse)		
SwissProt	Q9GZT9, Q96KS0 (Human); Q91YE3, Q91YE2 (Mouse); P59722, Q6AYU4 (Rat)		
Storage/Stability	Shipped at 4°C. Upon delivery aliquot and store at -20°C for one year. Avoid freeze/thaw cycles.		

Application key: E- ELISA, WB- Western blot, IH- Immunohistochemistry, IF- Immunofluorescence, FC- Flow cytometry, IC- Immunocytochemistry, IP- Immunoprecipitation, ChIP- Chromatin Immunoprecipitation, EMSA- Electrophoretic Mobility Shift Assay, BL- Blocking, SE- Sandwich ELISA, CBE- Cell-based ELISA, RNAi- RNA interference

Species reactivity key: H- Human, M- Mouse, R- Rat, B- Bovine, C- Chicken, D- Dog, G- Goat, Mk- Monkey, P- Pig, Rb- Rabbit, S- Sheep, Z- Zebrafish

COHESION BIOSCIENCES LIMITED

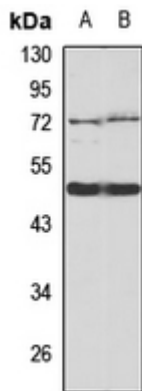
WEB
www.cohesionbio.com

ORDER
order@cohesionbio.com

SUPPORT
techsupport@cohesionbio.com

CUSTOM
custom@cohesionbio.com

Product Data Sheet



Western blot analysis of EGLN1/2 expression in HL60 (A), HEK293T (B) whole cell lysates. (Predicted band size: 36; 43; 46; 40 kD; Observed band size: 46 kD)

Application key: E- ELISA, WB- Western blot, IH- Immunohistochemistry, IF- Immunofluorescence, FC- Flow cytometry, IC- Immunocytochemistry, IP- Immunoprecipitation, CHIP- Chromatin Immunoprecipitation, EMSA- Electrophoretic Mobility Shift Assay, BL- Blocking, SE- Sandwich ELISA, CBE- Cell-based ELISA, RNAi- RNA interference

Species reactivity key: H- Human, M- Mouse, R- Rat, B- Bovine, C- Chicken, D- Dog, G- Goat, Mk- Monkey, P- Pig, Rb- Rabbit, S- Sheep, Z- Zebrafish

COHESION BIOSCIENCES LIMITED

WEB

www.cohesionbio.com

ORDER

order@cohesionbio.com

SUPPORT

techsupport@cohesionbio.com

CUSTOM

custom@cohesionbio.com