

Anti-eIF2C2 Antibody

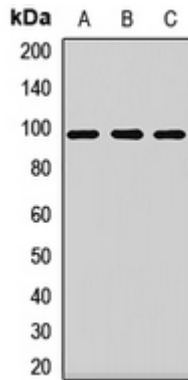
Catalog #	Source	Reactivity	Applications
CQA3148	Rabbit	H, M, R	WB, IH
Description	Rabbit polyclonal antibody to eIF2C2		
Immunogen	KLH-conjugated synthetic peptide of human eIF2C2		
Purification	The antibody was purified by immunogen affinity chromatography.		
Specificity	Recognizes endogenous levels of eIF2C2 protein.		
Clonality	Polyclonal		
Conjugation			
Form	Liquid in 0.42% Potassium phosphate, 0.87% Sodium chloride, pH 7.3, 30% glycerol, and 0.01% sodium azide.		
Dilution	WB (1/500 - 1/2000), IH (1/50 - 1/200)		
Gene Symbol	AGO2		
Alternative Names	EIF2C2; Protein argonaute-2; Argonaute2; hAgo2; Argonaute RISC catalytic component 2; Eukaryotic translation initiation factor 2C 2; eIF-2C 2; eIF2C 2; PAZ Piwi domain protein; PPD; Protein slicer		
Entrez Gene	27161 (Human); 239528 (Mouse); 59117 (Rat)		
SwissProt	Q9UKV8 (Human); Q8CJG0 (Mouse); Q9QZ81 (Rat)		
Storage/Stability	Shipped at 4°C. Upon delivery aliquot and store at -20°C for one year. Avoid freeze/thaw cycles.		

Application key: E- ELISA, WB- Western blot, IH- Immunohistochemistry, IF- Immunofluorescence, FC- Flow cytometry, IC- Immunocytochemistry, IP- Immunoprecipitation, CHIP- Chromatin Immunoprecipitation, EMSA- Electrophoretic Mobility Shift Assay, BL- Blocking, SE- Sandwich ELISA, CBE- Cell-based ELISA, RNAi- RNA interference

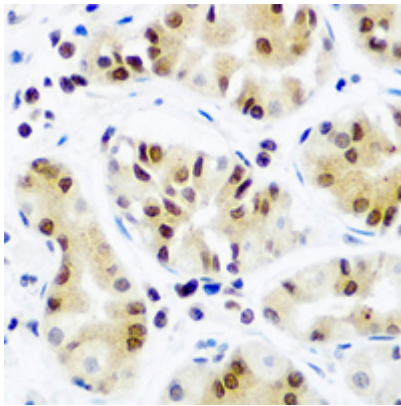
Species reactivity key: H- Human, M- Mouse, R- Rat, B- Bovine, C- Chicken, D- Dog, G- Goat, Mk- Monkey, P- Pig, Rb- Rabbit, S- Sheep, Z- Zebrafish

COHESION BIOSCIENCES LIMITED**WEB**www.cohesionbio.com**ORDER**order@cohesionbio.com**SUPPORT**techsupport@cohesionbio.com**CUSTOM**custom@cohesionbio.com

Product Data Sheet



Western blot analysis of eIF2C2 expression in HeLa (A), K562 (B), NIH3T3 (C) whole cell lysates. (Predicted band size: 93; 97 kD; Observed band size: 97 kD)



Immunohistochemical analysis of eIF2C2 staining in human stomach formalin fixed paraffin embedded tissue section. The section was pre-treated using heat mediated antigen retrieval with sodium citrate buffer (pH 6.0). The section was then incubated with the antibody at room temperature and detected using an HRP conjugated compact polymer system. DAB was used as the chromogen. The section was then counterstained with haematoxylin and mounted with DPX.

Application key: E- ELISA, WB- Western blot, IH- Immunohistochemistry, IF- Immunofluorescence, FC- Flow cytometry, IC- Immunocytochemistry, IP- Immunoprecipitation, CHIP- Chromatin Immunoprecipitation, EMSA- Electrophoretic Mobility Shift Assay, BL- Blocking, SE- Sandwich ELISA, CBE- Cell-based ELISA, RNAi- RNA interference

Species reactivity key: H- Human, M- Mouse, R- Rat, B- Bovine, C- Chicken, D- Dog, G- Goat, Mk- Monkey, P- Pig, Rb- Rabbit, S- Sheep, Z- Zebrafish

COHESION BIOSCIENCES LIMITED

WEB

www.cohesionbio.com

ORDER

order@cohesionbio.com

SUPPORT

techsupport@cohesionbio.com

CUSTOM

custom@cohesionbio.com