

## Anti-POLR2B Antibody

| Catalog #                | Source   | Reactivity | Applications |
|--------------------------|--|------------|--------------|
| CQA3133                  | Rabbit   | H, M, R    | WB, IH       |
| <b>Description</b>       | Rabbit polyclonal antibody to POLR2B   |            |              |
| <b>Immunogen</b>         | Recombinant full length protein of human POLR2B  |            |              |
| <b>Purification</b>      | The antibody was purified by immunogen affinity chromatography.  |            |              |
| <b>Specificity</b>       | Recognizes endogenous levels of POLR2B protein.  |            |              |
| <b>Clonality</b>         | Polyclonal   |            |              |
| <b>Conjugation</b>       |  |            |              |
| <b>Form</b>              | Liquid in 0.42% Potassium phosphate, 0.87% Sodium chloride, pH 7.3, 30% glycerol, and 0.01% sodium azide.  |            |              |
| <b>Dilution</b>          | WB (1/500 - 1/2000), IH (1/50 - 1/200)   |            |              |
| <b>Gene Symbol</b>       | POLR2B   |            |              |
| <b>Alternative Names</b> | DNA-directed RNA polymerase II subunit RPB2; DNA-directed RNA polymerase II 140 kDa polypeptide; DNA-directed RNA polymerase II subunit B; RNA polymerase II subunit 2; RNA polymerase II subunit B2 |            |              |
| <b>Entrez Gene</b>       | 5431 (Human); 231329 (Mouse)   |            |              |
| <b>SwissProt</b>         | P30876 (Human); Q8CFI7 (Mouse)   |            |              |
| <b>Storage/Stability</b> | Shipped at 4°C. Upon delivery aliquot and store at -20°C for one year. Avoid freeze/thaw cycles.   |            |              |

**Application key:** E- ELISA, WB- Western blot, IH- Immunohistochemistry, IF- Immunofluorescence, FC- Flow cytometry, IC- Immunocytochemistry, IP- Immunoprecipitation, CHIP- Chromatin Immunoprecipitation, EMSA- Electrophoretic Mobility Shift Assay, BL- Blocking, SE- Sandwich ELISA, CBE- Cell-based ELISA, RNAi- RNA interference

**Species reactivity key:** H- Human, M- Mouse, R- Rat, B- Bovine, C- Chicken, D- Dog, G- Goat, Mk- Monkey, P- Pig, Rb- Rabbit, S- Sheep, Z- Zebrafish

### COHESION BIOSCIENCES LIMITED

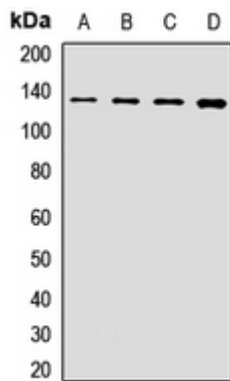
**WEB**  
[www.cohesionbio.com](http://www.cohesionbio.com)

**ORDER**  
[order@cohesionbio.com](mailto:order@cohesionbio.com)

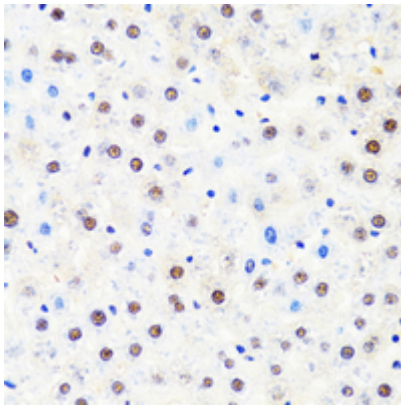
**SUPPORT**  
[techsupport@cohesionbio.com](mailto:techsupport@cohesionbio.com)

**CUSTOM**  
[custom@cohesionbio.com](mailto:custom@cohesionbio.com)

## Product Data Sheet



Western blot analysis of POLR2B expression in SHSY5Y (A), HepG2 (B), mouse brain (C), rat ovary (D) whole cell lysates. (Predicted band size: 133 kD; Observed band size: 134 kD)



Immunohistochemical analysis of POLR2B staining in rat liver formalin fixed paraffin embedded tissue section. The section was pre-treated using heat mediated antigen retrieval with sodium citrate buffer (pH 6.0). The section was then incubated with the antibody at room temperature and detected using an HRP conjugated compact polymer system. DAB was used as the chromogen. The section was then counterstained with haematoxylin and mounted with DPX.

**Application key:** E- ELISA, WB- Western blot, IH- Immunohistochemistry, IF- Immunofluorescence, FC- Flow cytometry, IC- Immunocytochemistry, IP- Immunoprecipitation, CHIP- Chromatin Immunoprecipitation, EMSA- Electrophoretic Mobility Shift Assay, BL- Blocking, SE- Sandwich ELISA, CBE- Cell-based ELISA, RNAi- RNA interference

**Species reactivity key:** H- Human, M- Mouse, R- Rat, B- Bovine, C- Chicken, D- Dog, G- Goat, Mk- Monkey, P- Pig, Rb- Rabbit, S- Sheep, Z- Zebrafish

### COHESION BIOSCIENCES LIMITED

**WEB**

[www.cohesionbio.com](http://www.cohesionbio.com)

**ORDER**

[order@cohesionbio.com](mailto:order@cohesionbio.com)

**SUPPORT**

[techsupport@cohesionbio.com](mailto:techsupport@cohesionbio.com)

**CUSTOM**

[custom@cohesionbio.com](mailto:custom@cohesionbio.com)