

Anti-Histone H2B (Phospho-S14) Antibody

Catalog #	Source	Reactivity	Applications
CPA9334	Rabbit	H, M, R	WB, IH
Description	Rabbit polyclonal antibody to Histone H2B (Phospho-S14)		
Immunogen	KLH-conjugated synthetic phosphopeptide corresponding to residues surrounding S14 of human Histone H2B protein. The exact sequence is proprietary.		
Purification	The antibody was purified by immunogen affinity chromatography.		
Specificity	Recognizes endogenous levels of Histone H2B protein only when phosphorylated at S14.		
Clonality	Polyclonal		
Conjugation			
Form	Liquid in 0.42% Potassium phosphate, 0.87% Sodium chloride, pH 7.3, 30% glycerol, and 0.01% sodium azide.		
Dilution	WB (1/1000 - 1/2000), IH (1/200 - 1/500)		
Gene Symbol	HIST1H2BC		
Alternative Names	HIST1H2BA; TSH2B; Histone H2B type 1-A; Histone H2B testis; Testis-specific histone H2B; HIST1H2BB; H2BFF; Histone H2B type 1-B; Histone H2B.1; Histone H2B.f; H2B/f; HIST1H2BC; H2BFL; HIST1H2BE; H2BFH; HIST1H2BF; H2BFG; HIST1H2BG; H2BFA; HIST1H2BI; H2BFK;		
Entrez Gene	255626, 3018, 3017, 8339, 8343, 8344, 8346, 8347 (Human); 319177, 319178, 319179 (Mouse); 24829 (Rat)		
SwissProt	Q96A08, P33778, P62807 (Human); P70696, Q64475, Q6ZWY9 (Mouse); Q00729 (Rat)		

Storage/Stability Shipped at 4°C. Upon delivery aliquot and store at -20°C for one year. Avoid

Application key: E- ELISA, WB- Western blot, IH- Immunohistochemistry, IF- Immunofluorescence, FC- Flow cytometry, IC- Immunocytochemistry, IP- Immunoprecipitation, ChIP- Chromatin Immunoprecipitation, EMSA- Electrophoretic Mobility Shift Assay, BL- Blocking, SE- Sandwich ELISA, CBE- Cell-based ELISA, RNAi- RNA interference

Species reactivity key: H- Human, M- Mouse, R- Rat, B- Bovine, C- Chicken, D- Dog, G- Goat, Mk- Monkey, P- Pig, Rb- Rabbit, S- Sheep, Z- Zebrafish

COHESION BIOSCIENCES LIMITED

WEB
www.cohesionbio.com

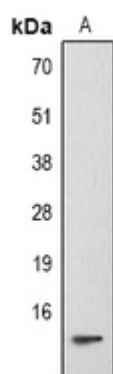
ORDER
order@cohesionbio.com

SUPPORT
techsupport@cohesionbio.com

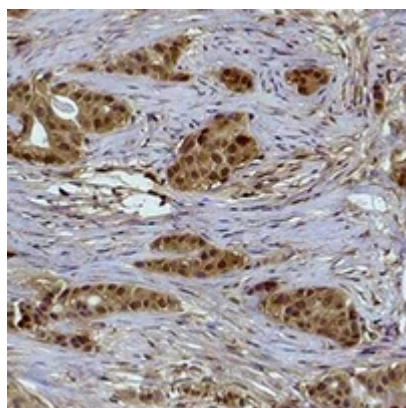
CUSTOM
custom@cohesionbio.com

Product Data Sheet

freeze/thaw cycles.



Western blot analysis of Histone H2B (Phospho-S14) expression in HeLa (A) whole cell lysates. (Predicted band size: 14 kD; Observed band size: 15 kD)



Immunohistochemical analysis of Histone H2B (Phospho-S14) staining in human breast cancer formalin fixed paraffin embedded tissue section. The section was pre-treated using heat mediated antigen retrieval with sodium citrate buffer (pH 6.0). The section was then incubated with the antibody at room temperature and detected using an HRP conjugated compact polymer system. DAB was used as the chromogen. The section was then counterstained with haematoxylin and mounted with DPX.

Application key: E- ELISA, WB- Western blot, IH- Immunohistochemistry, IF- Immunofluorescence, FC- Flow cytometry, IC- Immunocytochemistry, IP- Immunoprecipitation, CHIP- Chromatin Immunoprecipitation, EMSA- Electrophoretic Mobility Shift Assay, BL- Blocking, SE- Sandwich ELISA, CBE- Cell-based ELISA, RNAi- RNA interference

Species reactivity key: H- Human, M- Mouse, R- Rat, B- Bovine, C- Chicken, D- Dog, G- Goat, Mk- Monkey, P- Pig, Rb- Rabbit, S- Sheep, Z- Zebrafish

COHESION BIOSCIENCES LIMITED

WEB

www.cohesionbio.com

ORDER

order@cohesionbio.com

SUPPORT

techsupport@cohesionbio.com

CUSTOM

custom@cohesionbio.com