

Anti-Histone H1 (Phospho-S2) Antibody

Catalog #	Source	Reactivity	Applications
CPA9309	Rabbit	H, M, R	WB, IH
Description	Rabbit polyclonal antibody to Histone H1 (Phospho-S2)		
Immunogen	KLH-conjugated synthetic phosphopeptide corresponding to residues surrounding S2 of human Histone H1 protein. The exact sequence is proprietary.		
Purification	The antibody was purified by immunogen affinity chromatography.		
Specificity	Recognizes endogenous levels of Histone H1 protein only when phosphorylated at S2.		
Clonality	Polyclonal		
Conjugation			
Form	Liquid in 0.42% Potassium phosphate, 0.87% Sodium chloride, pH 7.3, 30% glycerol, and 0.01% sodium azide.		
Dilution	WB (1/1000 - 1/2000), IH (1/200 - 1/500)		
Gene Symbol	HIST1H1A; HIST1H1C; HIST1H1D; HIST1H1E		
Alternative Names	HIST1H1A; H1F1; Histone H1.1; Histone H1a; HIST1H1C; H1F2; Histone H1.2; Histone H1c; Histone H1d; Histone H1s-1; HIST1H1D; H1F3; Histone H1.3; Histone H1c; Histone H1s-2; HIST1H1E; H1F4; Histone H1.4; Histone H1b; Histone H1s-4		
Entrez Gene	3024, 3006, 3007, 3008 (Human); 80838, 50708, 14957, 50709 (Mouse); 291145, 201097 (Rat)		
SwissProt	Q02539, P16403, P16402, P10412 (Human); P43275, P15864, P43277, P43274 (Mouse); D4A3K5, P15865 (Rat)		
Storage/Stability	Shipped at 4°C. Upon delivery aliquot and store at -20°C for one year. Avoid freeze/thaw cycles.		

Application key: E- ELISA, WB- Western blot, IH- Immunohistochemistry, IF- Immunofluorescence, FC- Flow cytometry, IC- Immunocytochemistry, IP- Immunoprecipitation, ChIP- Chromatin Immunoprecipitation, EMSA- Electrophoretic Mobility Shift Assay, BL- Blocking, SE- Sandwich ELISA, CBE- Cell-based ELISA, RNAi- RNA interference

Species reactivity key: H- Human, M- Mouse, R- Rat, B- Bovine, C- Chicken, D- Dog, G- Goat, Mk- Monkey, P- Pig, Rb- Rabbit, S- Sheep, Z- Zebrafish

COHESION BIOSCIENCES LIMITED

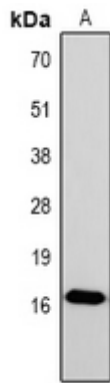
WEB
www.cohesionbio.com

ORDER
order@cohesionbio.com

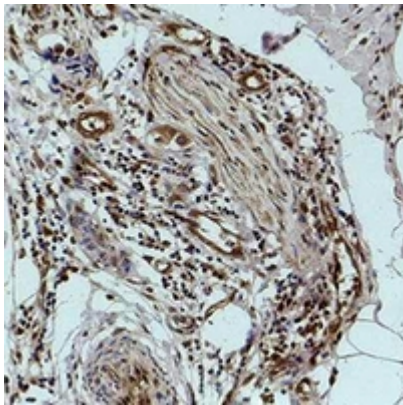
SUPPORT
techsupport@cohesionbio.com

CUSTOM
custom@cohesionbio.com

Product Data Sheet



Western blot analysis of Histone H1 (Phospho-S2) expression in HeLa (A) whole cell lysates. (Predicted band size: 21; 22 kD; Observed band size: 17-25 kD)



Immunohistochemical analysis of Histone H1 (Phospho-S2) staining in human breast cancer formalin fixed paraffin embedded tissue section. The section was pre-treated using heat mediated antigen retrieval with sodium citrate buffer (pH 6.0). The section was then incubated with the antibody at room temperature and detected using an HRP conjugated compact polymer system. DAB was used as the chromogen. The section was then counterstained with haematoxylin and mounted with DPX.

Application key: E- ELISA, WB- Western blot, IH- Immunohistochemistry, IF- Immunofluorescence, FC- Flow cytometry, IC- Immunocytochemistry, IP- Immunoprecipitation, CHIP- Chromatin Immunoprecipitation, EMSA- Electrophoretic Mobility Shift Assay, BL- Blocking, SE- Sandwich ELISA, CBE- Cell-based ELISA, RNAi- RNA interference

Species reactivity key: H- Human, M- Mouse, R- Rat, B- Bovine, C- Chicken, D- Dog, G- Goat, Mk- Monkey, P- Pig, Rb- Rabbit, S- Sheep, Z- Zebrafish

COHESION BIOSCIENCES LIMITED

WEB

www.cohesionbio.com

ORDER

order@cohesionbio.com

SUPPORT

techsupport@cohesionbio.com

CUSTOM

custom@cohesionbio.com