

## Anti-CD54 Antibody

Catalog #	Source	Reactivity	Applications
CPA8540	Mouse	H	IF, FC
<b>Description</b>	Mouse monoclonal antibody to CD54		
<b>Immunogen</b>	Native purified human CD54.		
<b>Purification</b>	The antibody was purified by affinity chromatography.		
<b>Specificity</b>	Recognizes human CD54		
<b>Clonality</b>	Monoclonal (clone: 15.2)		
<b>Conjugation</b>			
<b>Form</b>	Mouse IgG1. Liquid in PBS, pH 7.3, and 0.02% sodium azide.		
<b>Dilution</b>			
<b>Gene Symbol</b>	ICAM1		
<b>Alternative Names</b>	Intercellular adhesion molecule 1; ICAM-1; Major group rhinovirus receptor; CD antigen CD54		
<b>Entrez Gene</b>	3383 (Human)		
<b>SwissProt</b>	P05362 (Human)		
<b>Storage/Stability</b>	Shipped at 4°C. Upon delivery aliquot and store at -20°C for one year. Avoid freeze/thaw cycles.		

**Application key:** E- ELISA, WB- Western blot, IH- Immunohistochemistry, IF- Immunofluorescence, FC- Flow cytometry, IC- Immunocytochemistry, IP- Immunoprecipitation, CHIP- Chromatin Immunoprecipitation, EMSA- Electrophoretic Mobility Shift Assay, BL- Blocking, SE- Sandwich ELISA, CBE- Cell-based ELISA, RNAi- RNA interference

**Species reactivity key:** H- Human, M- Mouse, R- Rat, B- Bovine, C- Chicken, D- Dog, G- Goat, Mk- Monkey, P- Pig, Rb- Rabbit, S- Sheep, Z- Zebrafish

## COHESION BIOSCIENCES LIMITED

## WEB

[www.cohesionbio.com](http://www.cohesionbio.com)

## ORDER

[order@cohesionbio.com](mailto:order@cohesionbio.com)

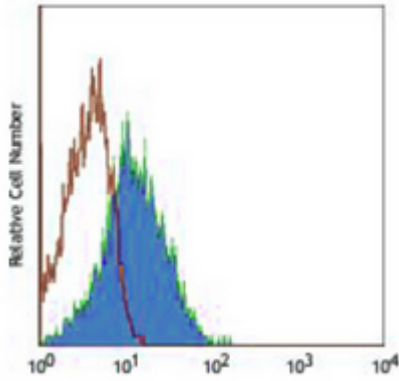
## SUPPORT

[techsupport@cohesionbio.com](mailto:techsupport@cohesionbio.com)

## CUSTOM

[custom@cohesionbio.com](mailto:custom@cohesionbio.com)

## Product Data Sheet



Flow cytometric analysis of human peripheral blood lymphocytes using Anti-CD54 Antibody, followed by anti-mouse IgG PE.

**Application key:** E- ELISA, WB- Western blot, IH- Immunohistochemistry, IF- Immunofluorescence, FC- Flow cytometry, IC- Immunocytochemistry, IP- Immunoprecipitation, CHIP- Chromatin Immunoprecipitation, EMSA- Electrophoretic Mobility Shift Assay, BL- Blocking, SE- Sandwich ELISA, CBE- Cell-based ELISA, RNAi- RNA interference

**Species reactivity key:** H- Human, M- Mouse, R- Rat, B- Bovine, C- Chicken, D- Dog, G- Goat, Mk- Monkey, P- Pig, Rb- Rabbit, S- Sheep, Z- Zebrafish

### COHESION BIOSCIENCES LIMITED

**WEB**

[www.cohesionbio.com](http://www.cohesionbio.com)

**ORDER**

[order@cohesionbio.com](mailto:order@cohesionbio.com)

**SUPPORT**

[techsupport@cohesionbio.com](mailto:techsupport@cohesionbio.com)

**CUSTOM**

[custom@cohesionbio.com](mailto:custom@cohesionbio.com)