

## Anti-Alpha-tubulin (Acetyl-K352) Antibody

Catalog #	Source	Reactivity	Applications
CPA7260	Rabbit	H, M, R, B, Mk	WB
<b>Description</b>	Rabbit polyclonal antibody to Alpha-tubulin (Acetyl-K352)		
<b>Immunogen</b>	KLH-conjugated synthetic acetylated peptide corresponding to residues surrounding K352 of human Alpha-tubulin protein. The exact sequence is proprietary.		
<b>Purification</b>	The antibody was purified by immunogen affinity chromatography.		
<b>Specificity</b>	Recognizes endogenous levels of Alpha-tubulin protein only when acetylated at K352.		
<b>Clonality</b>	Polyclonal		
<b>Conjugation</b>			
<b>Form</b>	Liquid in 0.42% Potassium phosphate, 0.87% Sodium chloride, pH 7.3, 30% glycerol, and 0.01% sodium azide.		
<b>Dilution</b>	WB (1/500 - 1/1000)		
<b>Gene Symbol</b>	TUBA1A; TUBA1B; TUBA1C; TUBA3C; TUBA4A; TUBA8		
<b>Alternative Names</b>	TUBA1A; TUBA3; Tubulin alpha-1A chain; Alpha-tubulin 3; Tubulin B-alpha-1; Tubulin alpha-3 chain; TUBA1B; Tubulin alpha-1B chain; Alpha-tubulin ubiquitous; Tubulin K-alpha-1; Tubulin alpha-ubiquitous chain; TUBA1C; TUBA6; Tubulin alpha-1C chain; Alpha-tub		
<b>Entrez Gene</b>	7846, 10376, 84790, 113457, 7278, 7277, 1962, 51807 (Human); 22142, 22143, 22146 (Mouse); 64158, 500929, 100909441 (Rat)		
<b>SwissProt</b>	Q71U36, P68363, Q9BQE3, Q13748, P68366, Q9NY65 (Human); P68369, P05213, P68373 (Mouse); P68370, Q6P9V9, Q6AYZ1 (Rat)		
<b>Storage/Stability</b>	Shipped at 4°C. Upon delivery aliquot and store at -20°C for one year. Avoid		
<b>Application key:</b>	E- ELISA, WB- Western blot, IH- Immunohistochemistry, IF- Immunofluorescence, FC- Flow cytometry, IC- Immunocytochemistry, IP- Immunoprecipitation, ChIP- Chromatin Immunoprecipitation, EMSA- Electrophoretic Mobility Shift Assay, BL- Blocking, SE- Sandwich ELISA, CBE- Cell-based ELISA, RNAi- RNA interference		
<b>Species reactivity key:</b>	H- Human, M- Mouse, R- Rat, B- Bovine, C- Chicken, D- Dog, G- Goat, Mk- Monkey, P- Pig, Rb- Rabbit, S- Sheep, Z- Zebrafish		

### COHESION BIOSCIENCES LIMITED

**WEB**  
www.cohesionbio.com

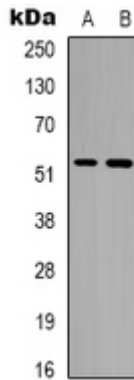
**ORDER**  
order@cohesionbio.com

**SUPPORT**  
techsupport@cohesionbio.com

**CUSTOM**  
custom@cohesionbio.com

# Product Data Sheet

freeze/thaw cycles.



Western blot analysis of Alpha-tubulin (Acetyl-K352) expression in A549 (A), Jurkat (B) whole cell lysates. (Predicted band size: 50; 49 kD; Observed band size: 52 kD)

**Application key:** E- ELISA, WB- Western blot, IH- Immunohistochemistry, IF- Immunofluorescence, FC- Flow cytometry, IC- Immunocytochemistry, IP- Immunoprecipitation, CHIP- Chromatin Immunoprecipitation, EMSA- Electrophoretic Mobility Shift Assay, BL- Blocking, SE- Sandwich ELISA, CBE- Cell-based ELISA, RNAi- RNA interference

**Species reactivity key:** H- Human, M- Mouse, R- Rat, B- Bovine, C- Chicken, D- Dog, G- Goat, Mk- Monkey, P- Pig, Rb- Rabbit, S- Sheep, Z- Zebrafish

## COHESION BIOSCIENCES LIMITED

**WEB**

[www.cohesionbio.com](http://www.cohesionbio.com)

**ORDER**

[order@cohesionbio.com](mailto:order@cohesionbio.com)

**SUPPORT**

[techsupport@cohesionbio.com](mailto:techsupport@cohesionbio.com)

**CUSTOM**

[custom@cohesionbio.com](mailto:custom@cohesionbio.com)