

## Anti-HSP72 (Acetyl-K246) Antibody

| Catalog #                | Source  | Reactivity    | Applications |
|--------------------------|---|---------------|--------------|
| CPA7241                  | Rabbit  | H, R, B, D, P | WB           |
| <b>Description</b>       | Rabbit polyclonal antibody to HSP72 (Acetyl-K246)   |               |              |
| <b>Immunogen</b>         | KLH-conjugated synthetic acetylated peptide corresponding to residues surrounding K246 of human HSP72 protein. The exact sequence is proprietary. |               |              |
| <b>Purification</b>      | The antibody was purified by immunogen affinity chromatography.   |               |              |
| <b>Specificity</b>       | Recognizes endogenous levels of HSP72 protein only when acetylated at K246.   |               |              |
| <b>Clonality</b>         | Polyclonal  |               |              |
| <b>Conjugation</b>       |   |               |              |
| <b>Form</b>              | Liquid in 0.42% Potassium phosphate, 0.87% Sodium chloride, pH 7.3, 30% glycerol, and 0.01% sodium azide.   |               |              |
| <b>Dilution</b>          | WB (1/500 - 1/1000)   |               |              |
| <b>Gene Symbol</b>       | HSPA1A  |               |              |
| <b>Alternative Names</b> | HSPA1; HSX70; Heat shock 70 kDa protein 1A/1B; Heat shock 70 kDa protein 1/2; HSP70-1/HSP70-2; HSP70.1/HSP70.2                                    |               |              |
| <b>Entrez Gene</b>       | 3303, 3304 (Human); 24472, 294254 (Rat)   |               |              |
| <b>SwissProt</b>         | P08107 (Human); Q07439 (Rat)  |               |              |
| <b>Storage/Stability</b> | Shipped at 4°C. Upon delivery aliquot and store at -20°C for one year. Avoid freeze/thaw cycles.  |               |              |

**Application key:** E- ELISA, WB- Western blot, IH- Immunohistochemistry, IF- Immunofluorescence, FC- Flow cytometry, IC- Immunocytochemistry, IP- Immunoprecipitation, CHIP- Chromatin Immunoprecipitation, EMSA- Electrophoretic Mobility Shift Assay, BL- Blocking, SE- Sandwich ELISA, CBE- Cell-based ELISA, RNAi- RNA interference

**Species reactivity key:** H- Human, M- Mouse, R- Rat, B- Bovine, C- Chicken, D- Dog, G- Goat, Mk- Monkey, P- Pig, Rb- Rabbit, S- Sheep, Z- Zebrafish

### COHESION BIOSCIENCES LIMITED

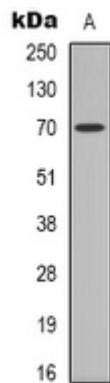
**WEB**  
[www.cohesionbio.com](http://www.cohesionbio.com)

**ORDER**  
[order@cohesionbio.com](mailto:order@cohesionbio.com)

**SUPPORT**  
[techsupport@cohesionbio.com](mailto:techsupport@cohesionbio.com)

**CUSTOM**  
[custom@cohesionbio.com](mailto:custom@cohesionbio.com)

## Product Data Sheet



Western blot analysis of HSP72 (Acetyl-K246) expression in rat kidney (A) whole cell lysates. (Predicted band size: 70 kD; Observed band size: 70 kD)

**Application key:** E- ELISA, WB- Western blot, IH- Immunohistochemistry, IF- Immunofluorescence, FC- Flow cytometry, IC- Immunocytochemistry, IP- Immunoprecipitation, CHIP- Chromatin Immunoprecipitation, EMSA- Electrophoretic Mobility Shift Assay, BL- Blocking, SE- Sandwich ELISA, CBE- Cell-based ELISA, RNAi- RNA interference

**Species reactivity key:** H- Human, M- Mouse, R- Rat, B- Bovine, C- Chicken, D- Dog, G- Goat, Mk- Monkey, P- Pig, Rb- Rabbit, S- Sheep, Z- Zebrafish

### COHESION BIOSCIENCES LIMITED

**WEB**

[www.cohesionbio.com](http://www.cohesionbio.com)

**ORDER**

[order@cohesionbio.com](mailto:order@cohesionbio.com)

**SUPPORT**

[techsupport@cohesionbio.com](mailto:techsupport@cohesionbio.com)

**CUSTOM**

[custom@cohesionbio.com](mailto:custom@cohesionbio.com)