

## Anti-Histone H4 (Acetyl-K91) Antibody

Catalog #	Source	Reactivity	Applications
CPA6613	Rabbit	H	WB
<b>Description</b>	Rabbit polyclonal antibody to Histone H4 (Acetyl-K91)		
<b>Immunogen</b>	KLH-conjugated synthetic acetylated peptide corresponding to residues surrounding K91 of human Histone H4 protein. The exact sequence is proprietary.		
<b>Purification</b>	The antibody was purified by immunogen affinity chromatography.		
<b>Specificity</b>	Recognizes endogenous levels of Histone H4 protein only when acetylated at K91.		
<b>Clonality</b>	Polyclonal		
<b>Conjugation</b>			
<b>Form</b>	Liquid in 0.42% Potassium phosphate, 0.87% Sodium chloride, pH 7.3, 30% glycerol, and 0.01% sodium azide.		
<b>Dilution</b>	WB (1/500 - 1/1000)		
<b>Gene Symbol</b>	HIST1H4A		
<b>Alternative Names</b>	H4/A; H4FA; H4/I; H4FI; H4/G; H4FG; H4/B; H4FB; H4/J; H4FJ; H4/C; H4FC; H4/H; H4FH; H4/M; H4FM; H4/E; H4FE; H4/D; H4FD; H4/K; H4FK; H4/N; H4F2; H4FN; HIST2H4; H4/O; H4FO; Histone H4		
<b>Entrez Gene</b>	121504, 554313, 8294, 8359, 8360, 8361, 8362, 8363, 8364, 8365, 8366, 8367, 8368, 8370 (Human)		
<b>SwissProt</b>	P62805 (Human)		
<b>Storage/Stability</b>	Shipped at 4°C. Upon delivery aliquot and store at -20°C for one year. Avoid freeze/thaw cycles.		

**Application key:** E- ELISA, WB- Western blot, IH- Immunohistochemistry, IF- Immunofluorescence, FC- Flow cytometry, IC- Immunocytochemistry, IP- Immunoprecipitation, CHIP- Chromatin Immunoprecipitation, EMSA- Electrophoretic Mobility Shift Assay, BL- Blocking, SE- Sandwich ELISA, CBE- Cell-based ELISA, RNAi- RNA interference

**Species reactivity key:** H- Human, M- Mouse, R- Rat, B- Bovine, C- Chicken, D- Dog, G- Goat, Mk- Monkey, P- Pig, Rb- Rabbit, S- Sheep, Z- Zebrafish

### COHESION BIOSCIENCES LIMITED

**WEB**  
www.cohesionbio.com

**ORDER**  
order@cohesionbio.com

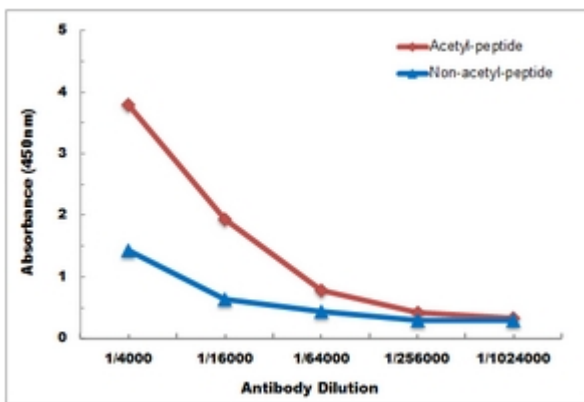
**SUPPORT**  
techsupport@cohesionbio.com

**CUSTOM**  
custom@cohesionbio.com

# Product Data Sheet



Western blot analysis of Histone H4 (Acetyl-K91) expression in HCT116 (A) whole cell lysates. (Predicted band size: 11 kD; Observed band size: 11 kD)



Direct ELISA antibody dose-response curve using Anti-Histone H4 (Acetyl-K91) Antibody. Antigen (Acetyl-peptide and non-acetyl-peptide) concentration is 5 ug/ml. Goat Anti-Rabbit IgG (H&L) - HRP was used as the secondary antibody, and signal was developed by TMB substrate.

**Application key:** E- ELISA, WB- Western blot, IH- Immunohistochemistry, IF- Immunofluorescence, FC- Flow cytometry, IC- Immunocytochemistry, IP- Immunoprecipitation, CHIP- Chromatin Immunoprecipitation, EMSA- Electrophoretic Mobility Shift Assay, BL- Blocking, SE- Sandwich ELISA, CBE- Cell-based ELISA, RNAi- RNA interference

**Species reactivity key:** H- Human, M- Mouse, R- Rat, B- Bovine, C- Chicken, D- Dog, G- Goat, Mk- Monkey, P- Pig, Rb- Rabbit, S- Sheep, Z- Zebrafish

## COHESION BIOSCIENCES LIMITED

### WEB

[www.cohesionbio.com](http://www.cohesionbio.com)

### ORDER

[order@cohesionbio.com](mailto:order@cohesionbio.com)

### SUPPORT

[techsupport@cohesionbio.com](mailto:techsupport@cohesionbio.com)

### CUSTOM

[custom@cohesionbio.com](mailto:custom@cohesionbio.com)