

Anti-Dicer Antibody

Catalog #	Source	Reactivity	Applications
CPA6470	Rabbit	H, M	WB
Description	Rabbit polyclonal antibody to Dicer		
Immunogen	KLH-conjugated synthetic peptide encompassing a sequence within the center region of human Dicer. The exact sequence is proprietary.		
Purification	The antibody was purified by immunogen affinity chromatography.		
Specificity	Recognizes endogenous levels of Dicer protein.		
Clonality	Polyclonal		
Conjugation			
Form	Liquid in 0.42% Potassium phosphate, 0.87% Sodium chloride, pH 7.3, 30% glycerol, and 0.01% sodium azide.		
Dilution	WB (1/500 - 1/1000)		
Gene Symbol	DICER1		
Alternative Names	DICER; HERNA; KIAA0928; Endoribonuclease Dicer; Helicase with RNase motif; Helicase MOI		
Entrez Gene	23405 (Human)		
SwissProt	Q9UPY3 (Human); Q8R418 (Mouse)		
Storage/Stability	Shipped at 4°C. Upon delivery aliquot and store at -20°C for one year. Avoid freeze/thaw cycles.		

Application key: E- ELISA, WB- Western blot, IH- Immunohistochemistry, IF- Immunofluorescence, FC- Flow cytometry, IC- Immunocytochemistry, IP- Immunoprecipitation, CHIP- Chromatin Immunoprecipitation, EMSA- Electrophoretic Mobility Shift Assay, BL- Blocking, SE- Sandwich ELISA, CBE- Cell-based ELISA, RNAi- RNA interference

Species reactivity key: H- Human, M- Mouse, R- Rat, B- Bovine, C- Chicken, D- Dog, G- Goat, Mk- Monkey, P- Pig, Rb- Rabbit, S- Sheep, Z- Zebrafish

COHESION BIOSCIENCES LIMITED

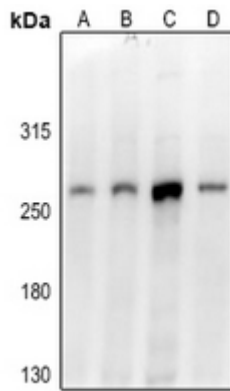
WEB
www.cohesionbio.com

ORDER
order@cohesionbio.com

SUPPORT
techsupport@cohesionbio.com

CUSTOM
custom@cohesionbio.com

Product Data Sheet



Western blot analysis of Dicer expression in mouse testis (A), EC9706 (B), HEK293T (C), MCF7 (D) whole cell lysates.
(Predicted band size: 218 kD; Observed band size: 260 kD)

Application key: E- ELISA, WB- Western blot, IH- Immunohistochemistry, IF- Immunofluorescence, FC- Flow cytometry, IC- Immunocytochemistry, IP- Immunoprecipitation, CHIP- Chromatin Immunoprecipitation, EMSA- Electrophoretic Mobility Shift Assay, BL- Blocking, SE- Sandwich ELISA, CBE- Cell-based ELISA, RNAi- RNA interference

Species reactivity key: H- Human, M- Mouse, R- Rat, B- Bovine, C- Chicken, D- Dog, G- Goat, Mk- Monkey, P- Pig, Rb- Rabbit, S- Sheep, Z- Zebrafish

COHESION BIOSCIENCES LIMITED

WEB

www.cohesionbio.com

ORDER

order@cohesionbio.com

SUPPORT

techsupport@cohesionbio.com

CUSTOM

custom@cohesionbio.com