

## Anti-Alpha-tubulin Antibody

| Catalog #                | Source   | Reactivity | Applications |
|--------------------------|--|------------|--------------|
| CPA6383                  | Rabbit   | H, M, R    | WB           |
| <b>Description</b>       | Rabbit polyclonal antibody to Alpha-tubulin  |            |              |
| <b>Immunogen</b>         | KLH-conjugated synthetic peptide encompassing a sequence within the center region of human Alpha-tubulin. The exact sequence is proprietary. |            |              |
| <b>Purification</b>      | The antibody was purified by immunogen affinity chromatography.  |            |              |
| <b>Specificity</b>       | Recognizes endogenous levels of Alpha-tubulin protein.   |            |              |
| <b>Clonality</b>         | Polyclonal   |            |              |
| <b>Conjugation</b>       |  |            |              |
| <b>Form</b>              | Liquid in 0.42% Potassium phosphate, 0.87% Sodium chloride, pH 7.3, 30% glycerol, and 0.01% sodium azide.                                    |            |              |
| <b>Dilution</b>          | WB (1/500 - 1/1000)  |            |              |
| <b>Gene Symbol</b>       | TUBA1A   |            |              |
| <b>Alternative Names</b> | TUBA3; Tubulin alpha-1A chain; Alpha-tubulin 3; Tubulin B-alpha-1; Tubulin alpha-3 chain   |            |              |
| <b>Entrez Gene</b>       | 7846, 10376 (Human); 22142, 22143 (Mouse); 64158, 500929 (Rat)   |            |              |
| <b>SwissProt</b>         | Q71U36, P68363 (Human); P68369, P05213 (Mouse); P68370, Q6P9V9 (Rat)   |            |              |
| <b>Storage/Stability</b> | Shipped at 4°C. Upon delivery aliquot and store at -20°C for one year. Avoid freeze/thaw cycles.   |            |              |

**Application key:** E- ELISA, WB- Western blot, IH- Immunohistochemistry, IF- Immunofluorescence, FC- Flow cytometry, IC- Immunocytochemistry, IP- Immunoprecipitation, CHIP- Chromatin Immunoprecipitation, EMSA- Electrophoretic Mobility Shift Assay, BL- Blocking, SE- Sandwich ELISA, CBE- Cell-based ELISA, RNAi- RNA interference

**Species reactivity key:** H- Human, M- Mouse, R- Rat, B- Bovine, C- Chicken, D- Dog, G- Goat, Mk- Monkey, P- Pig, Rb- Rabbit, S- Sheep, Z- Zebrafish

### COHESION BIOSCIENCES LIMITED

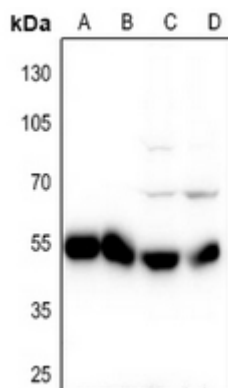
**WEB**  
[www.cohesionbio.com](http://www.cohesionbio.com)

**ORDER**  
[order@cohesionbio.com](mailto:order@cohesionbio.com)

**SUPPORT**  
[techsupport@cohesionbio.com](mailto:techsupport@cohesionbio.com)

**CUSTOM**  
[custom@cohesionbio.com](mailto:custom@cohesionbio.com)

## Product Data Sheet



Western blot analysis of Alpha-tubulin expression in mouse brain (A), rat brain (B), A549 (C), HeLa (D) whole cell lysates. (Predicted band size: 50; 49 kD; Observed band size: 52 kD)

**Application key:** E- ELISA, WB- Western blot, IH- Immunohistochemistry, IF- Immunofluorescence, FC- Flow cytometry, IC- Immunocytochemistry, IP- Immunoprecipitation, CHIP- Chromatin Immunoprecipitation, EMSA- Electrophoretic Mobility Shift Assay, BL- Blocking, SE- Sandwich ELISA, CBE- Cell-based ELISA, RNAi- RNA interference

**Species reactivity key:** H- Human, M- Mouse, R- Rat, B- Bovine, C- Chicken, D- Dog, G- Goat, Mk- Monkey, P- Pig, Rb- Rabbit, S- Sheep, Z- Zebrafish

### COHESION BIOSCIENCES LIMITED

**WEB**

[www.cohesionbio.com](http://www.cohesionbio.com)

**ORDER**

[order@cohesionbio.com](mailto:order@cohesionbio.com)

**SUPPORT**

[techsupport@cohesionbio.com](mailto:techsupport@cohesionbio.com)

**CUSTOM**

[custom@cohesionbio.com](mailto:custom@cohesionbio.com)