

## Anti-Histone H3 (Acetyl-K36) Antibody

Catalog #	Source	Reactivity	Applications
CPA6300	Rabbit	H, M, R, B, C, P, Z	WB
<b>Description</b>	Rabbit polyclonal antibody to Histone H3 (Acetyl-K36)		
<b>Immunogen</b>	KLH-conjugated synthetic acetylated peptide corresponding to residues surrounding K36 of human Histone H3 protein. The exact sequence is proprietary.		
<b>Purification</b>	The antibody was purified by immunogen affinity chromatography.		
<b>Specificity</b>	Recognizes endogenous levels of Histone H3 protein only when acetylated at K36.		
<b>Clonality</b>	Polyclonal		
<b>Conjugation</b>			
<b>Form</b>	Liquid in 0.42% Potassium phosphate, 0.87% Sodium chloride, pH 7.3, 30% glycerol, and 0.01% sodium azide.		
<b>Dilution</b>	WB (1/500 - 1/1000)		
<b>Gene Symbol</b>	HIST1H3A; HIST1H3; HIST1H3C; HIST1H3D; HIST1H3E; HIST1H3F; HIST1H3G; HIST1H3H; HIST1H3I; HIST1H3J; HIST2H3A; HIST2H3C; HIST2H3D; H3F3A; H3F3B; H3F3C		
<b>Alternative Names</b>	HIST1H3A; H3FA; HIST1H3B; H3FL; HIST1H3C; H3FC; HIST1H3D; H3FB; HIST1H3E; H3FD; HIST1H3F; H3FI; HIST1H3G; H3FH; HIST1H3H; H3FK; HIST1H3I; H3FF; HIST1H3J; H3FJ; Histone H3.1; Histone H3/a; Histone H3/b; Histone H3/c; Histone H3/d; Histone H3/f; Histone H3/		
<b>Entrez Gene</b>	8350, 8351, 8352, 8353, 8354, 8355, 8356, 8357, 8358, 8968, 126961, 333932, 653604, 3020, 3021, 440093 (Human); 319152, 15077, 15078, 625328 (Mouse); 291159, 100361558 (Rat)		
<b>SwissProt</b>	P68431, Q71DI3, P84243, Q6NXT2 (Human); P68433, P84228, P84244, P02301		
<b>Application key:</b>	E- ELISA, WB- Western blot, IH- Immunohistochemistry, IF- Immunofluorescence, FC- Flow cytometry, IC- Immunocytochemistry, IP- Immunoprecipitation, ChIP- Chromatin Immunoprecipitation, EMSA- Electrophoretic Mobility Shift Assay, BL- Blocking, SE- Sandwich ELISA, CBE- Cell-based ELISA, RNAi- RNA interference		
<b>Species reactivity key:</b>	H- Human, M- Mouse, R- Rat, B- Bovine, C- Chicken, D- Dog, G- Goat, Mk- Monkey, P- Pig, Rb- Rabbit, S- Sheep, Z- Zebrafish		

### COHESION BIOSCIENCES LIMITED

**WEB**  
www.cohesionbio.com

**ORDER**  
order@cohesionbio.com

**SUPPORT**  
techsupport@cohesionbio.com

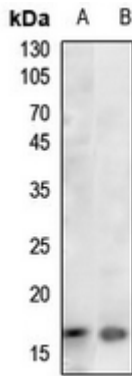
**CUSTOM**  
custom@cohesionbio.com

# Product Data Sheet

(Mouse); Q6LED0, P84245 (Rat)

## Storage/Stability

Shipped at 4°C. Upon delivery aliquot and store at -20°C for one year. Avoid freeze/thaw cycles.



Western blot analysis of Histone H3 (Acetyl-K36) expression in HEK293T (A), rat heart (B) whole cell lysates. (Predicted band size: 15 kD; Observed band size: 17 kD)

**Application key:** E- ELISA, WB- Western blot, IH- Immunohistochemistry, IF- Immunofluorescence, FC- Flow cytometry, IC- Immunocytochemistry, IP- Immunoprecipitation, CHIP- Chromatin Immunoprecipitation, EMSA- Electrophoretic Mobility Shift Assay, BL- Blocking, SE- Sandwich ELISA, CBE- Cell-based ELISA, RNAi- RNA interference

**Species reactivity key:** H- Human, M- Mouse, R- Rat, B- Bovine, C- Chicken, D- Dog, G- Goat, Mk- Monkey, P- Pig, Rb- Rabbit, S- Sheep, Z- Zebrafish

## COHESION BIOSCIENCES LIMITED

### WEB

[www.cohesionbio.com](http://www.cohesionbio.com)

### ORDER

[order@cohesionbio.com](mailto:order@cohesionbio.com)

### SUPPORT

[techsupport@cohesionbio.com](mailto:techsupport@cohesionbio.com)

### CUSTOM

[custom@cohesionbio.com](mailto:custom@cohesionbio.com)