

Anti-Histone H2B (Acetyl-K34) Antibody

Catalog #	Source	Reactivity	Applications
CPA6299	Rabbit	H, M, R, B	WB

Description	Rabbit polyclonal antibody to Histone H2B (Acetyl-K34)
Immunogen	KLH-conjugated synthetic acetylated peptide corresponding to residues surrounding K34 of human Histone H2B protein. The exact sequence is proprietary.
Purification	The antibody was purified by immunogen affinity chromatography.
Specificity	Recognizes endogenous levels of Histone H2B protein only when acetylated at K34.
Clonality	Polyclonal
Conjugation	
Form	Liquid in 0.42% Potassium phosphate, 0.87% Sodium chloride, pH 7.3, 30% glycerol, and 0.01% sodium azide.
Dilution	WB (1/500 - 1/1000)
Gene Symbol	HIST1H2BC; HIST1H2BE; HIST1H2BF; HIST1H2BG; HIST1H2BI; HIST1H2BD; HIST1H2BH; HIST1H2BK; HIST1H2BL; HIST1H2BM; HIST1H2BN; HIST2H2BF; H2BFS
Alternative Names	HIST1H2BC; H2BFL; HIST1H2BE; H2BFH; HIST1H2BF; H2BFG; HIST1H2BG; H2BFA; HIST1H2BI; H2BFK; Histone H2B type 1-C/E/F/G/I; Histone H2B.1 A; Histone H2B.a; H2B/a; Histone H2B.g; H2B/g; Histone H2B.h; H2B/h; Histone H2B.k; H2B/k; Histone H2B.l; H2B/l; HIST1H2BD; H2BFB; HIRIP2; Histone H2B type 1-D; HIRA-interacting protein 2; Histone H2B.1 B; Histone H2B.b; H2B/b; HIST1H2BH; H2BFJ; Histone H2B type 1-H; Histone H2B.j; H2B/j; HIST1H2BK; H2BFT; HIRIP1; Histone H2B type 1-K; H2B K; HIRA-interacting protein 1; HIST1H2BL; H2BFC; Histone H2B type 1-L; Histone H2B.c; H2B/c; HIST1H2BM; H2BFE; Histone H2B type 1-M; Histone H2B.e; H2B/e; HIST1H2BN; H2BFD; Histone H2B type 1-N; Histone H2B.d; H2B/d; HIST2H2BF;

Application key: E- ELISA, WB- Western blot, IH- Immunohistochemistry, IF- Immunofluorescence, FC- Flow cytometry, IC- Immunocytochemistry, IP- Immunoprecipitation, CHIP- Chromatin Immunoprecipitation, EMSA- Electrophoretic Mobility Shift Assay, BL- Blocking, SE- Sandwich ELISA, CBE- Cell-based ELISA, RNAi- RNA interference

Species reactivity key: H- Human, M- Mouse, R- Rat, B- Bovine, C- Chicken, D- Dog, G- Goat, Mk- Monkey, P- Pig, Rb- Rabbit, S- Sheep, Z- Zebrafish

COHESION BIOSCIENCES LIMITED

WEB
www.cohesionbio.com

ORDER
order@cohesionbio.com

SUPPORT
techsupport@cohesionbio.com

CUSTOM
custom@cohesionbio.com

Product Data Sheet

Histone H2B type 2-F; H2BFS; Histone H2B type F-S; Histone H2B.s; H2B/s

Entrez Gene

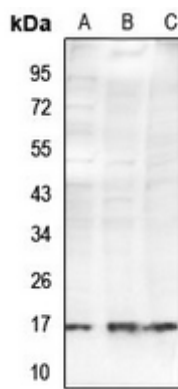
3017, 8339, 8343, 8344, 8346, 8347, 3017, 8345, 85236, 8340, 8342, 8341, 440689 (Human); 319179, 319182, 319184 (Mouse)

SwissProt

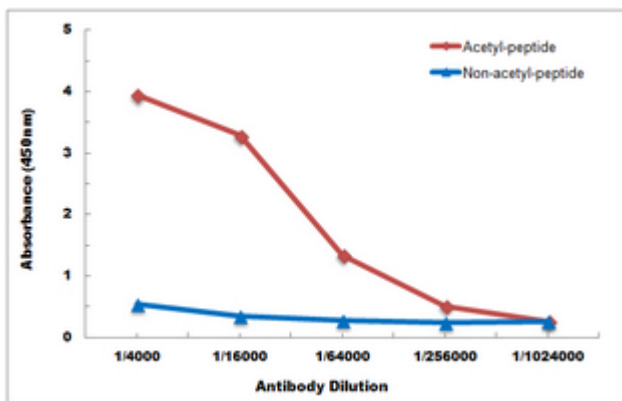
P62807, P58876, Q93079, O60814, Q99880, Q99879, Q99877, Q5QNW6, P57053 (Human); Q6ZWY9, Q64478, Q8CGP1 (Mouse)

Storage/Stability

Shipped at 4°C. Upon delivery aliquot and store at -20°C for one year. Avoid freeze/thaw cycles.



Western blot analysis of Histone H2B (Acetyl-K34) expression in A549 (A), BV2 (B), PC12 (C) whole cell lysates. (Predicted band size: 13 kD; Observed band size: 15 kD)



Direct ELISA antibody dose-response curve using Anti-Histone H2B (Acetyl-K34) Antibody. Antigen (Acetyl-peptide and non-acetyl-peptide) concentration is 5 ug/ml. Goat Anti-Rabbit IgG (H&L) - HRP was used as the secondary antibody, and signal was developed by TMB substrate.

Application key: E- ELISA, WB- Western blot, IH- Immunohistochemistry, IF- Immunofluorescence, FC- Flow cytometry, IC- Immunocytochemistry, IP- Immunoprecipitation, CHIP- Chromatin Immunoprecipitation, EMSA- Electrophoretic Mobility Shift Assay, BL- Blocking, SE- Sandwich ELISA, CBE- Cell-based ELISA, RNAi- RNA interference

Species reactivity key: H- Human, M- Mouse, R- Rat, B- Bovine, C- Chicken, D- Dog, G- Goat, Mk- Monkey, P- Pig, Rb- Rabbit, S- Sheep, Z- Zebrafish

COHESION BIOSCIENCES LIMITED

WEB

www.cohesionbio.com

ORDER

order@cohesionbio.com

SUPPORT

techsupport@cohesionbio.com

CUSTOM

custom@cohesionbio.com