

## Anti-Frizzled 5 Antibody

Catalog #	Source	Reactivity	Applications
CPA6194	Rabbit	H, M, R	WB, IF/IC
<b>Description</b>	Rabbit polyclonal antibody to Frizzled 5		
<b>Immunogen</b>	KLH-conjugated synthetic peptide encompassing a sequence within the N-term region of human Frizzled 5. The exact sequence is proprietary.		
<b>Purification</b>	The antibody was purified by immunogen affinity chromatography.		
<b>Specificity</b>	Recognizes endogenous levels of Frizzled 5 protein.		
<b>Clonality</b>	Polyclonal		
<b>Conjugation</b>			
<b>Form</b>	Liquid in 0.42% Potassium phosphate, 0.87% Sodium chloride, pH 7.3, 30% glycerol, and 0.01% sodium azide.		
<b>Dilution</b>	WB (1/500 - 1/1000), IF/IC (1/100 - 1/500)		
<b>Gene Symbol</b>	FZD5; FZD8		
<b>Alternative Names</b>	FZD5; C2orf31; Frizzled-5; Fz-5; hFz5; FzE5; FZD8; Frizzled-8; Fz-8; hFz8		
<b>Entrez Gene</b>	8325, 7855 (Human); 14367, 14370 (Mouse); 317674, 100909849 (Rat)		
<b>SwissProt</b>	Q13467, Q9H461 (Human); Q9EQD0, Q61091 (Mouse); Q8CHL0, Q498S8 (Rat)		
<b>Storage/Stability</b>	Shipped at 4°C. Upon delivery aliquot and store at -20°C for one year. Avoid freeze/thaw cycles.		

**Application key:** E- ELISA, WB- Western blot, IH- Immunohistochemistry, IF- Immunofluorescence, FC- Flow cytometry, IC- Immunocytochemistry, IP- Immunoprecipitation, ChIP- Chromatin Immunoprecipitation, EMSA- Electrophoretic Mobility Shift Assay, BL- Blocking, SE- Sandwich ELISA, CBE- Cell-based ELISA, RNAi- RNA interference

**Species reactivity key:** H- Human, M- Mouse, R- Rat, B- Bovine, C- Chicken, D- Dog, G- Goat, Mk- Monkey, P- Pig, Rb- Rabbit, S- Sheep, Z- Zebrafish

### COHESION BIOSCIENCES LIMITED

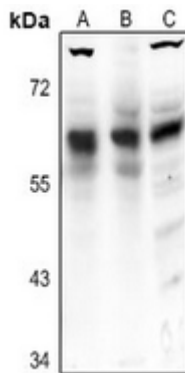
**WEB**  
www.cohesionbio.com

**ORDER**  
order@cohesionbio.com

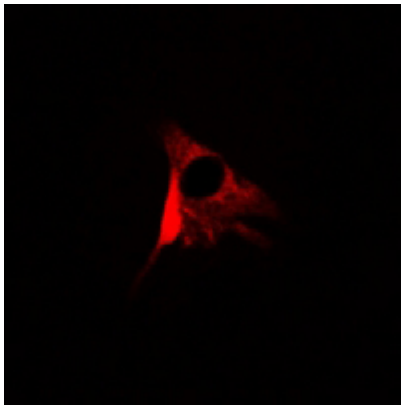
**SUPPORT**  
techsupport@cohesionbio.com

**CUSTOM**  
custom@cohesionbio.com

## Product Data Sheet



Western blot analysis of Frizzled 5 expression in SGC7901 (A), PC3 (B), MEF (C) whole cell lysates. (Predicted band size: 64; 73 kD; Observed band size: 65 kD)



Immunofluorescent analysis of Frizzled 5 staining in A549 cells. Formalin-fixed cells were permeabilized with 0.1% Triton X-100 in TBS for 5-10 minutes and blocked with 3% BSA-PBS for 30 minutes at room temperature. Cells were probed with the primary antibody in 3% BSA-PBS and incubated overnight at 4 °C in a humidified chamber. Cells were washed with PBST and incubated with a Alexa Fluor 594-conjugated secondary antibody (red) in PBS at room temperature in the dark.

**Application key:** E- ELISA, WB- Western blot, IH- Immunohistochemistry, IF- Immunofluorescence, FC- Flow cytometry, IC- Immunocytochemistry, IP- Immunoprecipitation, CHIP- Chromatin Immunoprecipitation, EMSA- Electrophoretic Mobility Shift Assay, BL- Blocking, SE- Sandwich ELISA, CBE- Cell-based ELISA, RNAi- RNA interference

**Species reactivity key:** H- Human, M- Mouse, R- Rat, B- Bovine, C- Chicken, D- Dog, G- Goat, Mk- Monkey, P- Pig, Rb- Rabbit, S- Sheep, Z- Zebrafish

### COHESION BIOSCIENCES LIMITED

**WEB**

[www.cohesionbio.com](http://www.cohesionbio.com)

**ORDER**

[order@cohesionbio.com](mailto:order@cohesionbio.com)

**SUPPORT**

[techsupport@cohesionbio.com](mailto:techsupport@cohesionbio.com)

**CUSTOM**

[custom@cohesionbio.com](mailto:custom@cohesionbio.com)