

Anti-BWR1A Antibody

Catalog #	Source	Reactivity	Applications
CPA6133	Rabbit	H, M, R, Mk	WB, IF/IC
Description	Rabbit polyclonal antibody to BWR1A		
Immunogen	KLH-conjugated synthetic peptide encompassing a sequence within the C-term region of human BWR1A. The exact sequence is proprietary.		
Purification	The antibody was purified by immunogen affinity chromatography.		
Specificity	Recognizes endogenous levels of BWR1A protein.		
Clonality	Polyclonal		
Conjugation			
Form	Liquid in 0.42% Potassium phosphate, 0.87% Sodium chloride, pH 7.3, 30% glycerol, and 0.01% sodium azide.		
Dilution	WB (1/500 - 1/1000), IF/IC (1/100 - 1/500)		
Gene Symbol	SLC22A18		
Alternative Names	BWR1A; BWSCR1A; HET; IMPT1; ITM; ORCTL2; SLC22A1L; TSSC5; Solute carrier family 22 member 18; Beckwith-Wiedemann syndrome chromosomal region 1 candidate gene A protein; Efflux transporter-like protein; Imprinted multi-membrane-spanning polyspecific transporter-related protein 1; Organic cation transporter-like protein 2; ORCTL-2; Solute carrier family 22 member 1-like; Tumor-suppressing STF cDNA 5 protein; Tumor-suppressing subchromosomal transferable fragment candidate gene 5 protein; p45-Beckwith-Wiedemann region 1 A; p45-BWR1A		
Entrez Gene	5002 (Human); 18400 (Mouse); 309131 (Rat)		
SwissProt	Q96BI1 (Human); Q78KK3 (Mouse); Q6AY78 (Rat)		

Application key: E- ELISA, WB- Western blot, IH- Immunohistochemistry, IF- Immunofluorescence, FC- Flow cytometry, IC- Immunocytochemistry, IP- Immunoprecipitation, CHIP- Chromatin Immunoprecipitation, EMSA- Electrophoretic Mobility Shift Assay, BL- Blocking, SE- Sandwich ELISA, CBE- Cell-based ELISA, RNAi- RNA interference

Species reactivity key: H- Human, M- Mouse, R- Rat, B- Bovine, C- Chicken, D- Dog, G- Goat, Mk- Monkey, P- Pig, Rb- Rabbit, S- Sheep, Z- Zebrafish

COHESION BIOSCIENCES LIMITED

WEB
www.cohesionbio.com

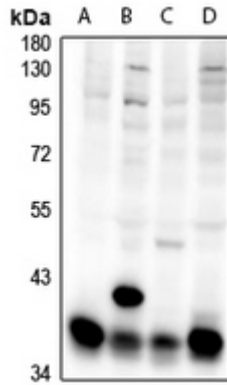
ORDER
order@cohesionbio.com

SUPPORT
techsupport@cohesionbio.com

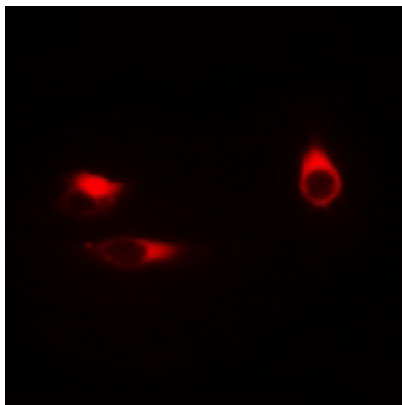
CUSTOM
custom@cohesionbio.com

Product Data Sheet

Storage/Stability Shipped at 4°C. Upon delivery aliquot and store at -20°C for one year. Avoid freeze/thaw cycles.



Western blot analysis of BWR1A expression in C6 (A), CT26 (B), HeLa (C), A2780 (D) whole cell lysates. (Predicted band size: 44 kD; Observed band size: 40; 44 kD)



Immunofluorescent analysis of BWR1A staining in HeLa cells. Formalin-fixed cells were permeabilized with 0.1% Triton X-100 in TBS for 5-10 minutes and blocked with 3% BSA-PBS for 30 minutes at room temperature. Cells were probed with the primary antibody in 3% BSA-PBS and incubated overnight at 4 °C in a humidified chamber. Cells were washed with PBST and incubated with a Alexa Fluor 594-conjugated secondary antibody (red) in PBS at room temperature in the dark.

Application key: E- ELISA, WB- Western blot, IH- Immunohistochemistry, IF- Immunofluorescence, FC- Flow cytometry, IC- Immunocytochemistry, IP- Immunoprecipitation, CHIP- Chromatin Immunoprecipitation, EMSA- Electrophoretic Mobility Shift Assay, BL- Blocking, SE- Sandwich ELISA, CBE- Cell-based ELISA, RNAi- RNA interference

Species reactivity key: H- Human, M- Mouse, R- Rat, B- Bovine, C- Chicken, D- Dog, G- Goat, Mk- Monkey, P- Pig, Rb- Rabbit, S- Sheep, Z- Zebrafish

COHESION BIOSCIENCES LIMITED

WEB
www.cohesionbio.com

ORDER
order@cohesionbio.com

SUPPORT
techsupport@cohesionbio.com

CUSTOM
custom@cohesionbio.com