

Anti-TAF4 Antibody

Catalog #	Source	Reactivity	Applications
CPA6104	Rabbit	H, M, R, C, P	WB, IH
Description	Rabbit polyclonal antibody to TAF4		
Immunogen	KLH-conjugated synthetic peptide encompassing a sequence within the C-term region of human TAF4. The exact sequence is proprietary.		
Purification	The antibody was purified by immunogen affinity chromatography.		
Specificity	Recognizes endogenous levels of TAF4 protein.		
Clonality	Polyclonal		
Conjugation			
Form	Liquid in 0.42% Potassium phosphate, 0.87% Sodium chloride, pH 7.3, 30% glycerol, and 0.01% sodium azide.		
Dilution	WB (1/500 - 1/1000), IH (1/50 - 1/200)		
Gene Symbol	TAF4; TAF4B		
Alternative Names	TAF4; TAF2C; TAF2C1; TAF4A; TAFII130; TAFII135; Transcription initiation factor TFIID subunit 4; RNA polymerase II TBP-associated factor subunit C; TBP-associated factor 4; Transcription initiation factor TFIID 130 kDa subunit; TAF(II)130; TAFII-130; TAFII130; Transcription initiation factor TFIID 135 kDa subunit; TAF(II)135; TAFII-135; TAFII135; TAF4B; TAF2C2; TAFII105; Transcription initiation factor TFIID subunit 4B; Transcription initiation factor TFIID 105 kDa subunit; TAF(II)105; TAFII-105; TAFII105		
Entrez Gene	6874, 6875 (Human)		
SwissProt	O00268, Q92750 (Human)		
Storage/Stability	Shipped at 4°C. Upon delivery aliquot and store at -20°C for one year. Avoid freeze/thaw cycles.		

Application key: E- ELISA, WB- Western blot, IH- Immunohistochemistry, IF- Immunofluorescence, FC- Flow cytometry, IC- Immunocytochemistry, IP- Immunoprecipitation, CHIP- Chromatin Immunoprecipitation, EMSA- Electrophoretic Mobility Shift Assay, BL- Blocking, SE- Sandwich ELISA, CBE- Cell-based ELISA, RNAi- RNA interference

Species reactivity key: H- Human, M- Mouse, R- Rat, B- Bovine, C- Chicken, D- Dog, G- Goat, Mk- Monkey, P- Pig, Rb- Rabbit, S- Sheep, Z- Zebrafish

COHESION BIOSCIENCES LIMITED

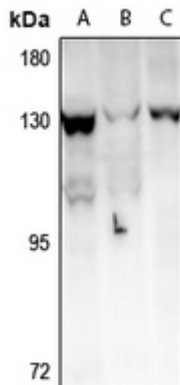
WEB
www.cohesionbio.com

ORDER
order@cohesionbio.com

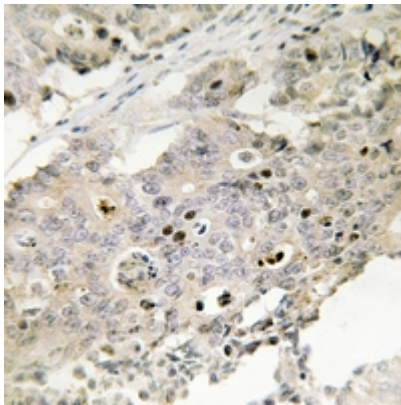
SUPPORT
techsupport@cohesionbio.com

CUSTOM
custom@cohesionbio.com

Product Data Sheet



Western blot analysis of TAF4 expression in A2780 (A), SKOV3 (B), mouse embryo (C) whole cell lysates. (Predicted band size: 110; 91 kD; Observed band size: 135; 105 kD)



Immunohistochemical analysis of TAF4 staining in human colon cancer formalin fixed paraffin embedded tissue section. The section was pre-treated using heat mediated antigen retrieval with sodium citrate buffer (pH 6.0). The section was then incubated with the antibody at room temperature and detected using an HRP conjugated compact polymer system. DAB was used as the chromogen. The section was then counterstained with haematoxylin and mounted with DPX.

Application key: E- ELISA, WB- Western blot, IH- Immunohistochemistry, IF- Immunofluorescence, FC- Flow cytometry, IC- Immunocytochemistry, IP- Immunoprecipitation, CHIP- Chromatin Immunoprecipitation, EMSA- Electrophoretic Mobility Shift Assay, BL- Blocking, SE- Sandwich ELISA, CBE- Cell-based ELISA, RNAi- RNA interference

Species reactivity key: H- Human, M- Mouse, R- Rat, B- Bovine, C- Chicken, D- Dog, G- Goat, Mk- Monkey, P- Pig, Rb- Rabbit, S- Sheep, Z- Zebrafish

COHESION BIOSCIENCES LIMITED

WEB

www.cohesionbio.com

ORDER

order@cohesionbio.com

SUPPORT

techsupport@cohesionbio.com

CUSTOM

custom@cohesionbio.com