

Anti-RAC1/2/3 (Phospho-S71) Antibody

Catalog #	Source	Reactivity	Applications
CPA6039	Rabbit	H, M, R	WB
Description	Rabbit polyclonal antibody to RAC1/2/3 (Phospho-S71)		
Immunogen	KLH-conjugated synthetic phosphopeptide corresponding to residues surrounding S71 of human RAC1/2/3 protein. The exact sequence is proprietary.		
Purification	The antibody was purified by immunogen affinity chromatography.		
Specificity	Recognizes endogenous levels of RAC1/2/3 protein only when phosphorylated at S71.		
Clonality	Polyclonal		
Conjugation			
Form	Liquid in 0.42% Potassium phosphate, 0.87% Sodium chloride, pH 7.3, 30% glycerol, and 0.01% sodium azide.		
Dilution	WB (1/500 - 1/1000)		
Gene Symbol	RAC1; RAC2; RAC3		
Alternative Names	RAC1; TC25; MIG5; Ras-related C3 botulinum toxin substrate 1; Cell migration-inducing gene 5 protein; Ras-like protein TC25; p21-Rac1; RAC2; Ras-related C3 botulinum toxin substrate 2; GX; Small G protein; p21-Rac2; RAC3; Ras-related C3 botulinum toxin su		
Entrez Gene	5879, 5880, 5881, 998 (Human); 19353, 19354, 170758, 12540 (Mouse); 363875, 64465 (Rat)		
SwissProt	P63000, P15153, P60763 (Human); P63001, Q05144, P60764, P60766 (Mouse); Q6RUV5, Q8CFN2 (Rat)		
Storage/Stability	Shipped at 4°C. Upon delivery aliquot and store at -20°C for one year. Avoid freeze/thaw cycles.		

Application key: E- ELISA, WB- Western blot, IH- Immunohistochemistry, IF- Immunofluorescence, FC- Flow cytometry, IC- Immunocytochemistry, IP- Immunoprecipitation, CHIP- Chromatin Immunoprecipitation, EMSA- Electrophoretic Mobility Shift Assay, BL- Blocking, SE- Sandwich ELISA, CBE- Cell-based ELISA, RNAi- RNA interference

Species reactivity key: H- Human, M- Mouse, R- Rat, B- Bovine, C- Chicken, D- Dog, G- Goat, Mk- Monkey, P- Pig, Rb- Rabbit, S- Sheep, Z- Zebrafish

COHESION BIOSCIENCES LIMITED

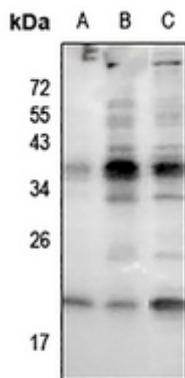
WEB
www.cohesionbio.com

ORDER
order@cohesionbio.com

SUPPORT
techsupport@cohesionbio.com

CUSTOM
custom@cohesionbio.com

Product Data Sheet



Western blot analysis of RAC1/2/3 (Phospho-S71) expression in H9C2 (A), Myla2059 (B), A375 (C) whole cell lysates. (Predicted band size: 21 kD; Observed band size: 21 kD)

Application key: E- ELISA, WB- Western blot, IH- Immunohistochemistry, IF- Immunofluorescence, FC- Flow cytometry, IC- Immunocytochemistry, IP- Immunoprecipitation, CHIP- Chromatin Immunoprecipitation, EMSA- Electrophoretic Mobility Shift Assay, BL- Blocking, SE- Sandwich ELISA, CBE- Cell-based ELISA, RNAi- RNA interference

Species reactivity key: H- Human, M- Mouse, R- Rat, B- Bovine, C- Chicken, D- Dog, G- Goat, Mk- Monkey, P- Pig, Rb- Rabbit, S- Sheep, Z- Zebrafish

COHESION BIOSCIENCES LIMITED

WEB

www.cohesionbio.com

ORDER

order@cohesionbio.com

SUPPORT

techsupport@cohesionbio.com

CUSTOM

custom@cohesionbio.com