

Anti-CD130 (Phospho-S782) Antibody

Catalog #	Source	Reactivity	Applications
CPA5870	Rabbit	H, M, R, C, Mk, P	WB
Description	Rabbit polyclonal antibody to CD130 (Phospho-S782)		
Immunogen	KLH-conjugated synthetic phosphopeptide corresponding to residues surrounding S782 of human CD130 protein. The exact sequence is proprietary.		
Purification	The antibody was purified by immunogen affinity chromatography.		
Specificity	Recognizes endogenous levels of CD130 protein only when phosphorylated at S782.		
Clonality	Polyclonal		
Conjugation			
Form	Liquid in 0.42% Potassium phosphate, 0.87% Sodium chloride, pH 7.3, 30% glycerol, and 0.01% sodium azide.		
Dilution	WB (1/500 - 1/1000)		
Gene Symbol	IL6ST		
Alternative Names	Interleukin-6 receptor subunit beta; IL-6 receptor subunit beta; IL-6R subunit beta; IL-6R-beta; IL-6RB; CDw130; Interleukin-6 signal transducer; Membrane glycoprotein 130; gp130; Oncostatin-M receptor subunit alpha; CD130		
Entrez Gene	3572 (Human); 16195 (Mouse)		
SwissProt	P40189 (Human); Q00560 (Mouse); P40190 (Rat)		
Storage/Stability	Shipped at 4°C. Upon delivery aliquot and store at -20°C for one year. Avoid freeze/thaw cycles.		

Application key: E- ELISA, WB- Western blot, IH- Immunohistochemistry, IF- Immunofluorescence, FC- Flow cytometry, IC- Immunocytochemistry, IP- Immunoprecipitation, CHIP- Chromatin Immunoprecipitation, EMSA- Electrophoretic Mobility Shift Assay, BL- Blocking, SE- Sandwich ELISA, CBE- Cell-based ELISA, RNAi- RNA interference

Species reactivity key: H- Human, M- Mouse, R- Rat, B- Bovine, C- Chicken, D- Dog, G- Goat, Mk- Monkey, P- Pig, Rb- Rabbit, S- Sheep, Z- Zebrafish

COHESION BIOSCIENCES LIMITED

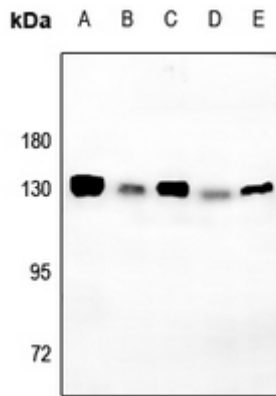
WEB
www.cohesionbio.com

ORDER
order@cohesionbio.com

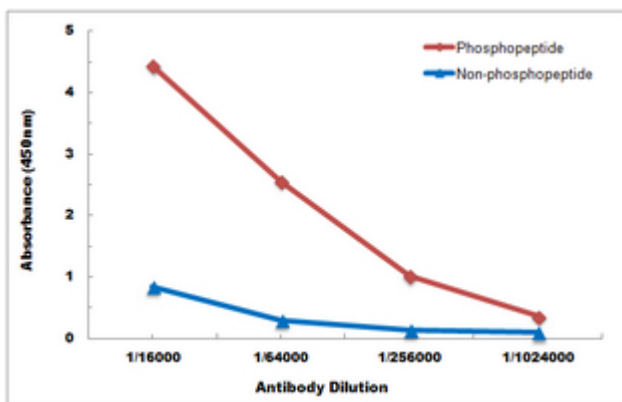
SUPPORT
techsupport@cohesionbio.com

CUSTOM
custom@cohesionbio.com

Product Data Sheet



Western blot analysis of CD130 (Phospho-S782) expression in HEK293T (A), SGC7901 (B), LO2 (C), PC12 (D), AML12 (E) whole cell lysates. (Predicted band size: 103 kD; Observed band size: 130 kD)



Direct ELISA antibody dose-response curve using Anti-CD130 (Phospho-S782) Antibody. Antigen (Phosphopeptide and non-phosphopeptide) concentration is 5 ug/ml. Goat Anti-Rabbit IgG (H&L) - HRP was used as the secondary antibody, and signal was developed by TMB substrate.

Application key: E- ELISA, WB- Western blot, IH- Immunohistochemistry, IF- Immunofluorescence, FC- Flow cytometry, IC- Immunocytochemistry, IP- Immunoprecipitation, CHIP- Chromatin Immunoprecipitation, EMSA- Electrophoretic Mobility Shift Assay, BL- Blocking, SE- Sandwich ELISA, CBE- Cell-based ELISA, RNAi- RNA interference

Species reactivity key: H- Human, M- Mouse, R- Rat, B- Bovine, C- Chicken, D- Dog, G- Goat, Mk- Monkey, P- Pig, Rb- Rabbit, S- Sheep, Z- Zebrafish

COHESION BIOSCIENCES LIMITED

WEB

www.cohesionbio.com

ORDER

order@cohesionbio.com

SUPPORT

techsupport@cohesionbio.com

CUSTOM

custom@cohesionbio.com