

Anti-Histone H2A (Acetyl-K95) Antibody

Catalog #	Source	Reactivity	Applications
CPA5847	Rabbit	H, M, R	WB
Description	Rabbit polyclonal antibody to Histone H2A (Acetyl-K95)		
Immunogen	KLH-conjugated synthetic acetylated peptide corresponding to residues surrounding K95 of human Histone H2A protein. The exact sequence is proprietary.		
Purification	The antibody was purified by immunogen affinity chromatography.		
Specificity	Recognizes endogenous levels of Histone H2A protein only when acetylated at K95.		
Clonality	Polyclonal		
Conjugation			
Form	Liquid in 0.42% Potassium phosphate, 0.87% Sodium chloride, pH 7.3, 30% glycerol, and 0.01% sodium azide.		
Dilution	WB (1/500 - 1/1000)		
Gene Symbol	HIST1H2AG; HIST1H2AI; HIST1H2AK; HIST1H2AL; HIST1H2AM		
Alternative Names	H2AFP; H2AFC; H2AFD; H2AFI; H2AFN; Histone H2A type 1; H2A.1; Histone H2A/p		
Entrez Gene	8329, 8330, 8332, 8336, 8969 (Human); 319164, 319165, 319166, 319167, 319170, 319171, 319172, 319191, 665433 (Mouse)		
SwissProt	POCOS8 (Human); P22752 (Mouse); P02262 (Rat)		
Storage/Stability	Shipped at 4°C. Upon delivery aliquot and store at -20°C for one year. Avoid freeze/thaw cycles.		

Application key: E- ELISA, WB- Western blot, IH- Immunohistochemistry, IF- Immunofluorescence, FC- Flow cytometry, IC- Immunocytochemistry, IP- Immunoprecipitation, CHIP- Chromatin Immunoprecipitation, EMSA- Electrophoretic Mobility Shift Assay, BL- Blocking, SE- Sandwich ELISA, CBE- Cell-based ELISA, RNAi- RNA interference

Species reactivity key: H- Human, M- Mouse, R- Rat, B- Bovine, C- Chicken, D- Dog, G- Goat, Mk- Monkey, P- Pig, Rb- Rabbit, S- Sheep, Z- Zebrafish

COHESION BIOSCIENCES LIMITED

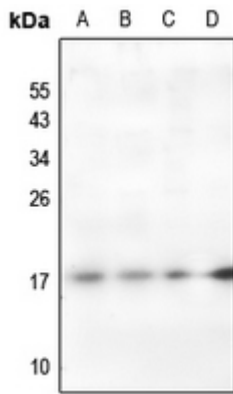
WEB
www.cohesionbio.com

ORDER
order@cohesionbio.com

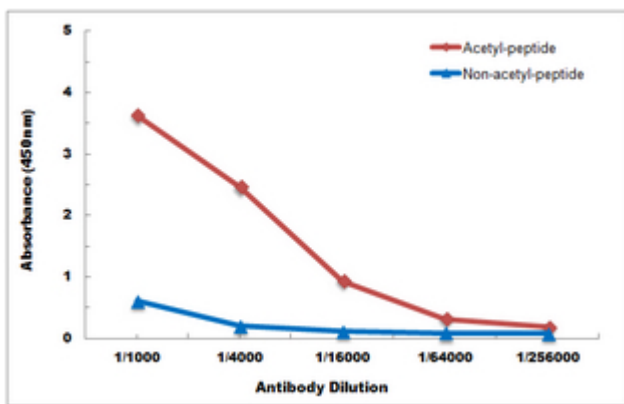
SUPPORT
techsupport@cohesionbio.com

CUSTOM
custom@cohesionbio.com

Product Data Sheet



Western blot analysis of Histone H2A (Acetyl-K95) expression in HeLa (A), HEK293T (B), 3T3L1 (C), rat lung (D) whole cell lysates. (Predicted band size: 14 kD; Observed band size: 17 kD)



Direct ELISA antibody dose-response curve using Anti-Histone H2A (Acetyl-K95) Antibody. Antigen (Acetyl-peptide and non-acetyl-peptide) concentration is 5 ug/ml. Goat Anti-Rabbit IgG (H&L) - HRP was used as the secondary antibody, and signal was developed by TMB substrate.

Application key: E- ELISA, WB- Western blot, IH- Immunohistochemistry, IF- Immunofluorescence, FC- Flow cytometry, IC- Immunocytochemistry, IP- Immunoprecipitation, CHIP- Chromatin Immunoprecipitation, EMSA- Electrophoretic Mobility Shift Assay, BL- Blocking, SE- Sandwich ELISA, CBE- Cell-based ELISA, RNAi- RNA interference

Species reactivity key: H- Human, M- Mouse, R- Rat, B- Bovine, C- Chicken, D- Dog, G- Goat, Mk- Monkey, P- Pig, Rb- Rabbit, S- Sheep, Z- Zebrafish

COHESION BIOSCIENCES LIMITED

WEB

www.cohesionbio.com

ORDER

order@cohesionbio.com

SUPPORT

techsupport@cohesionbio.com

CUSTOM

custom@cohesionbio.com