

Anti-AMPK gamma 1/2/3 Antibody

Catalog #	Source	Reactivity	Applications
CPA5813	Rabbit	H, M, R, B, P	WB, IF/IC
Description	Rabbit polyclonal antibody to AMPK gamma 1/2/3		
Immunogen	KLH-conjugated synthetic peptide encompassing a sequence within the center region of human AMPK gamma 1/2/3. The exact sequence is proprietary.		
Purification	The antibody was purified by immunogen affinity chromatography.		
Specificity	Recognizes endogenous levels of AMPK gamma 1/2/3 protein.		
Clonality	Polyclonal		
Conjugation			
Form	Liquid in 0.42% Potassium phosphate, 0.87% Sodium chloride, pH 7.3, 30% glycerol, and 0.01% sodium azide.		
Dilution	WB (1/500 - 1/1000), IF/IC (1/100 - 1/500)		
Gene Symbol	PRKAG1; PRKAG2; PRKAG3		
Alternative Names	PRKAG1; 5'-AMP-activated protein kinase subunit gamma-1; AMPK gamma1; AMPK subunit gamma-1; AMPKg; PRKAG2; 5'-AMP-activated protein kinase subunit gamma-2; AMPK gamma2; AMPK subunit gamma-2; H91620p; PRKAG3; AMPKG3; 5'-AMP-activated protein kinase subunit gamma-3; AMPK gamma3; AMPK subunit gamma-3		
Entrez Gene	5571, 51422, 53632, (Human); 19082, 108099, 241113 (Mouse); 25520 (Rat)		
SwissProt	P54619, Q9UGJ0, Q9UGI9 (Human); O54950, Q91WG5, Q8BGM7 (Mouse); P80385 (Rat)		
Storage/Stability	Shipped at 4°C. Upon delivery aliquot and store at -20°C for one year. Avoid freeze/thaw cycles.		

Application key: E- ELISA, WB- Western blot, IH- Immunohistochemistry, IF- Immunofluorescence, FC- Flow cytometry, IC- Immunocytochemistry, IP- Immunoprecipitation, CHIP- Chromatin Immunoprecipitation, EMSA- Electrophoretic Mobility Shift Assay, BL- Blocking, SE- Sandwich ELISA, CBE- Cell-based ELISA, RNAi- RNA interference

Species reactivity key: H- Human, M- Mouse, R- Rat, B- Bovine, C- Chicken, D- Dog, G- Goat, Mk- Monkey, P- Pig, Rb- Rabbit, S- Sheep, Z- Zebrafish

COHESION BIOSCIENCES LIMITED

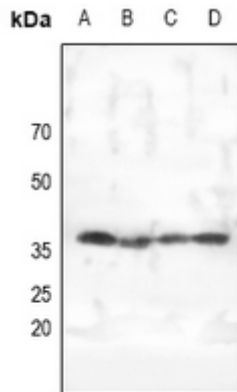
WEB
www.cohesionbio.com

ORDER
order@cohesionbio.com

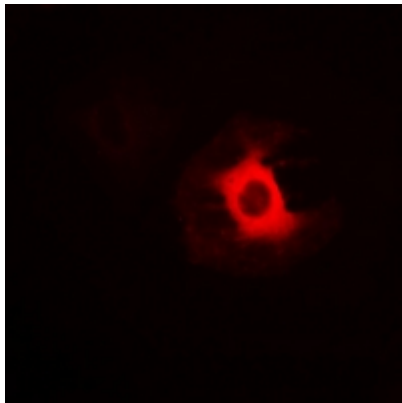
SUPPORT
techsupport@cohesionbio.com

CUSTOM
custom@cohesionbio.com

Product Data Sheet



Western blot analysis of AMPK gamma 1/2/3 expression in HEK293T (A), HepG2 (B), MCF7 (C), PC3 (D) whole cell lysates. (Predicted band size: 37; 63; 54 kD; Observed band size: 38 kD)



Immunofluorescent analysis of AMPK gamma 1/2/3 staining in A549 cells. Formalin-fixed cells were permeabilized with 0.1% Triton X-100 in TBS for 5-10 minutes and blocked with 3% BSA-PBS for 30 minutes at room temperature. Cells were probed with the primary antibody in 3% BSA-PBS and incubated overnight at 4 °C in a humidified chamber. Cells were washed with PBST and incubated with Alexa Fluor 647-conjugated secondary antibody (red) in PBS at room temperature in the dark.

Application key: E- ELISA, WB- Western blot, IH- Immunohistochemistry, IF- Immunofluorescence, FC- Flow cytometry, IC- Immunocytochemistry, IP- Immunoprecipitation, CHIP- Chromatin Immunoprecipitation, EMSA- Electrophoretic Mobility Shift Assay, BL- Blocking, SE- Sandwich ELISA, CBE- Cell-based ELISA, RNAi- RNA interference

Species reactivity key: H- Human, M- Mouse, R- Rat, B- Bovine, C- Chicken, D- Dog, G- Goat, Mk- Monkey, P- Pig, Rb- Rabbit, S- Sheep, Z- Zebrafish

COHESION BIOSCIENCES LIMITED

WEB

www.cohesionbio.com

ORDER

order@cohesionbio.com

SUPPORT

techsupport@cohesionbio.com

CUSTOM

custom@cohesionbio.com