

## Anti-Girdin Antibody

| Catalog #                | Source   | Reactivity | Applications |
|--------------------------|--|------------|--------------|
| CPA5810                  | Rabbit   | H, M, R    | WB, IH       |
| <b>Description</b>       | Rabbit polyclonal antibody to Girdin   |            |              |
| <b>Immunogen</b>         | KLH-conjugated synthetic peptide encompassing a sequence within the center region of human Girdin. The exact sequence is proprietary.  |            |              |
| <b>Purification</b>      | The antibody was purified by immunogen affinity chromatography.  |            |              |
| <b>Specificity</b>       | Recognizes endogenous levels of Girdin protein.  |            |              |
| <b>Clonality</b>         | Polyclonal   |            |              |
| <b>Conjugation</b>       |  |            |              |
| <b>Form</b>              | Liquid in 0.42% Potassium phosphate, 0.87% Sodium chloride, pH 7.3, 30% glycerol, and 0.01% sodium azide.  |            |              |
| <b>Dilution</b>          | WB (1/500 - 1/1000), IH (1/50 - 1/100)   |            |              |
| <b>Gene Symbol</b>       | CCDC88A  |            |              |
| <b>Alternative Names</b> | APE; GRDN; KIAA1212; Girdin; Akt phosphorylation enhancer; APE; Coiled-coil domain-containing protein 88A; G alpha-interacting vesicle-associated protein; GIV; Girders of actin filament; Hook-related protein 1; HkRP1 |            |              |
| <b>Entrez Gene</b>       | 55704 (Human); 108686 (Mouse)  |            |              |
| <b>SwissProt</b>         | Q3V6T2 (Human); Q5SNZ0 (Mouse)   |            |              |
| <b>Storage/Stability</b> | Shipped at 4°C. Upon delivery aliquot and store at -20°C for one year. Avoid freeze/thaw cycles.   |            |              |

**Application key:** E- ELISA, WB- Western blot, IH- Immunohistochemistry, IF- Immunofluorescence, FC- Flow cytometry, IC- Immunocytochemistry, IP- Immunoprecipitation, CHIP- Chromatin Immunoprecipitation, EMSA- Electrophoretic Mobility Shift Assay, BL- Blocking, SE- Sandwich ELISA, CBE- Cell-based ELISA, RNAi- RNA interference

**Species reactivity key:** H- Human, M- Mouse, R- Rat, B- Bovine, C- Chicken, D- Dog, G- Goat, Mk- Monkey, P- Pig, Rb- Rabbit, S- Sheep, Z- Zebrafish

### COHESION BIOSCIENCES LIMITED

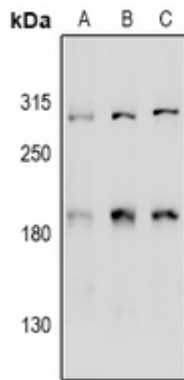
**WEB**  
[www.cohesionbio.com](http://www.cohesionbio.com)

**ORDER**  
[order@cohesionbio.com](mailto:order@cohesionbio.com)

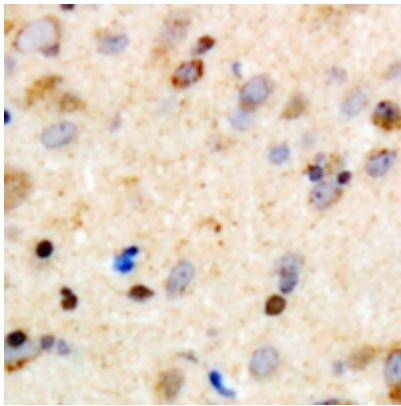
**SUPPORT**  
[techsupport@cohesionbio.com](mailto:techsupport@cohesionbio.com)

**CUSTOM**  
[custom@cohesionbio.com](mailto:custom@cohesionbio.com)

## Product Data Sheet



Western blot analysis of Girdin expression in K562 (A), CT26 (B), rat testis (C) whole cell lysates. (Predicted band size: 216 kD; Observed band size: 200; 280 kD)



Immunohistochemical analysis of Girdin staining in human brain formalin fixed paraffin embedded tissue section. The section was pre-treated using heat mediated antigen retrieval with sodium citrate buffer (pH 6.0). The section was then incubated with the antibody at room temperature and detected using an HRP conjugated compact polymer system. DAB was used as the chromogen. The section was then counterstained with haematoxylin and mounted with DPX.

**Application key:** E- ELISA, WB- Western blot, IH- Immunohistochemistry, IF- Immunofluorescence, FC- Flow cytometry, IC- Immunocytochemistry, IP- Immunoprecipitation, CHIP- Chromatin Immunoprecipitation, EMSA- Electrophoretic Mobility Shift Assay, BL- Blocking, SE- Sandwich ELISA, CBE- Cell-based ELISA, RNAi- RNA interference

**Species reactivity key:** H- Human, M- Mouse, R- Rat, B- Bovine, C- Chicken, D- Dog, G- Goat, Mk- Monkey, P- Pig, Rb- Rabbit, S- Sheep, Z- Zebrafish

### COHESION BIOSCIENCES LIMITED

**WEB**

[www.cohesionbio.com](http://www.cohesionbio.com)

**ORDER**

[order@cohesionbio.com](mailto:order@cohesionbio.com)

**SUPPORT**

[techsupport@cohesionbio.com](mailto:techsupport@cohesionbio.com)

**CUSTOM**

[custom@cohesionbio.com](mailto:custom@cohesionbio.com)