

Anti-PKN1/2 (Phospho-T774/816) Antibody

Catalog #	Source	Reactivity	Applications
CPA5781	Rabbit	H, M, R, B	WB
Description	Rabbit polyclonal antibody to PKN1/2 (Phospho-T774/816)		
Immunogen	KLH-conjugated synthetic phosphopeptide corresponding to residues surrounding T774/816 of human PKN1/2 protein. The exact sequence is proprietary.		
Purification	The antibody was purified by immunogen affinity chromatography.		
Specificity	Recognizes endogenous levels of PKN1/2 protein only when phosphorylated at T774/816.		
Clonality	Polyclonal		
Conjugation			
Form	Liquid in 0.42% Potassium phosphate, 0.87% Sodium chloride, pH 7.3, 30% glycerol, and 0.01% sodium azide.		
Dilution	WB (1/500 - 1/1000)		
Gene Symbol	PKN1; PKN2		
Alternative Names	PKN1; PAK1; PKN; PRK1; PRKCL1; Serine/threonine-protein kinase N1; Protease-activated kinase 1; PAK-1; Protein kinase C-like 1; Protein kinase C-like PKN; Protein kinase PKN-alpha; Protein-kinase C-related kinase 1; Serine-threonine protein kinase N; PKN2; PRK2; PRKCL2; Serine/threonine-protein kinase N2; PKN gamma; Protein kinase C-like 2; Protein-kinase C-related kinase 2		
Entrez Gene	5585, 5586 (Human); 320795, 109333 (Mouse); 29355 (Rat)		
SwissProt	Q16512, Q16513 (Human); P70268, Q8BWW9 (Mouse); Q63433, O08874 (Rat)		
Storage/Stability	Shipped at 4°C. Upon delivery aliquot and store at -20°C for one year. Avoid freeze/thaw cycles.		

Application key: E- ELISA, WB- Western blot, IH- Immunohistochemistry, IF- Immunofluorescence, FC- Flow cytometry, IC- Immunocytochemistry, IP- Immunoprecipitation, CHIP- Chromatin Immunoprecipitation, EMSA- Electrophoretic Mobility Shift Assay, BL- Blocking, SE- Sandwich ELISA, CBE- Cell-based ELISA, RNAi- RNA interference

Species reactivity key: H- Human, M- Mouse, R- Rat, B- Bovine, C- Chicken, D- Dog, G- Goat, Mk- Monkey, P- Pig, Rb- Rabbit, S- Sheep, Z- Zebrafish

COHESION BIOSCIENCES LIMITED

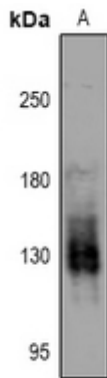
WEB
www.cohesionbio.com

ORDER
order@cohesionbio.com

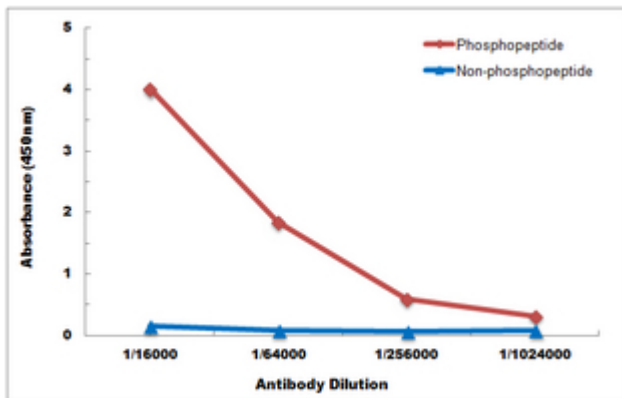
SUPPORT
techsupport@cohesionbio.com

CUSTOM
custom@cohesionbio.com

Product Data Sheet



Western blot analysis of PKN1/2 (Phospho-T774/816) expression in HCT116 (A) whole cell lysates. (Predicted band size: 103; 112 kD; Observed band size: 130 kD)



Direct ELISA antibody dose-response curve using Anti-PKN1/2 (Phospho-T774/816) Antibody. Antigen (Phosphopeptide and non-phosphopeptide) concentration is 5 ug/ml. Goat Anti-Rabbit IgG (H&L) - HRP was used as the secondary antibody, and signal was developed by TMB substrate.

Application key: E- ELISA, WB- Western blot, IH- Immunohistochemistry, IF- Immunofluorescence, FC- Flow cytometry, IC- Immunocytochemistry, IP- Immunoprecipitation, CHIP- Chromatin Immunoprecipitation, EMSA- Electrophoretic Mobility Shift Assay, BL- Blocking, SE- Sandwich ELISA, CBE- Cell-based ELISA, RNAi- RNA interference

Species reactivity key: H- Human, M- Mouse, R- Rat, B- Bovine, C- Chicken, D- Dog, G- Goat, Mk- Monkey, P- Pig, Rb- Rabbit, S- Sheep, Z- Zebrafish

COHESION BIOSCIENCES LIMITED

WEB
www.cohesionbio.com

ORDER
order@cohesionbio.com

SUPPORT
techsupport@cohesionbio.com

CUSTOM
custom@cohesionbio.com