

## Anti-PTP1B (Phospho-Y66) Antibody

Catalog #	Source	Reactivity	Applications
CPA5779	Rabbit	H, M, R	WB
<b>Description</b>	Rabbit polyclonal antibody to PTP1B (Phospho-Y66)		
<b>Immunogen</b>	KLH-conjugated synthetic phosphopeptide corresponding to residues surrounding Y66 of human PTP1B protein. The exact sequence is proprietary.		
<b>Purification</b>	The antibody was purified by immunogen affinity chromatography.		
<b>Specificity</b>	Recognizes endogenous levels of PTP1B protein only when phosphorylated at Y66.		
<b>Clonality</b>	Polyclonal		
<b>Conjugation</b>			
<b>Form</b>	Liquid in 0.42% Potassium phosphate, 0.87% Sodium chloride, pH 7.3, 30% glycerol, and 0.01% sodium azide.		
<b>Dilution</b>	WB (1/500 - 1/1000)		
<b>Gene Symbol</b>	PTPN1		
<b>Alternative Names</b>	PTP1B; Tyrosine-protein phosphatase non-receptor type 1; Protein-tyrosine phosphatase 1B; PTP-1B		
<b>Entrez Gene</b>	5770 (Human); 19246 (Mouse); 24697 (Rat)		
<b>SwissProt</b>	P18031 (Human); P35821 (Mouse); P20417 (Rat)		
<b>Storage/Stability</b>	Shipped at 4°C. Upon delivery aliquot and store at -20°C for one year. Avoid freeze/thaw cycles.		

**Application key:** E- ELISA, WB- Western blot, IH- Immunohistochemistry, IF- Immunofluorescence, FC- Flow cytometry, IC- Immunocytochemistry, IP- Immunoprecipitation, CHIP- Chromatin Immunoprecipitation, EMSA- Electrophoretic Mobility Shift Assay, BL- Blocking, SE- Sandwich ELISA, CBE- Cell-based ELISA, RNAi- RNA interference

**Species reactivity key:** H- Human, M- Mouse, R- Rat, B- Bovine, C- Chicken, D- Dog, G- Goat, Mk- Monkey, P- Pig, Rb- Rabbit, S- Sheep, Z- Zebrafish

## COHESION BIOSCIENCES LIMITED

## WEB

[www.cohesionbio.com](http://www.cohesionbio.com)

## ORDER

[order@cohesionbio.com](mailto:order@cohesionbio.com)

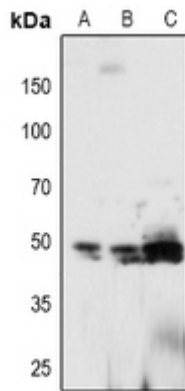
## SUPPORT

[techsupport@cohesionbio.com](mailto:techsupport@cohesionbio.com)

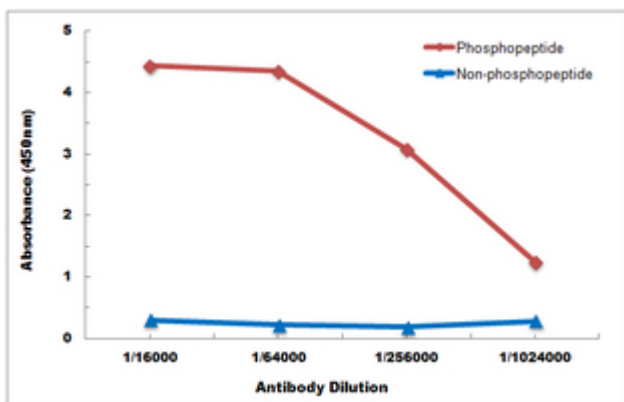
## CUSTOM

[custom@cohesionbio.com](mailto:custom@cohesionbio.com)

# Product Data Sheet



Western blot analysis of PTP1B (Phospho-Y66) expression in MCF7 (A), A549 (B), mouse lung (C) whole cell lysates. (Predicted band size: 49 kD; Observed band size: 50 kD)



Direct ELISA antibody dose-response curve using Anti-PTP1B (Phospho-Y66) Antibody. Antigen (Phosphopeptide and non-phosphopeptide) concentration is 5 ug/ml. Goat Anti-Rabbit IgG (H&L) - HRP was used as the secondary antibody, and signal was developed by TMB substrate.

**Application key:** E- ELISA, WB- Western blot, IH- Immunohistochemistry, IF- Immunofluorescence, FC- Flow cytometry, IC- Immunocytochemistry, IP- Immunoprecipitation, CHIP- Chromatin Immunoprecipitation, EMSA- Electrophoretic Mobility Shift Assay, BL- Blocking, SE- Sandwich ELISA, CBE- Cell-based ELISA, RNAi- RNA interference

**Species reactivity key:** H- Human, M- Mouse, R- Rat, B- Bovine, C- Chicken, D- Dog, G- Goat, Mk- Monkey, P- Pig, Rb- Rabbit, S- Sheep, Z- Zebrafish

## COHESION BIOSCIENCES LIMITED

**WEB**  
[www.cohesionbio.com](http://www.cohesionbio.com)

**ORDER**  
[order@cohesionbio.com](mailto:order@cohesionbio.com)

**SUPPORT**  
[techsupport@cohesionbio.com](mailto:techsupport@cohesionbio.com)

**CUSTOM**  
[custom@cohesionbio.com](mailto:custom@cohesionbio.com)