

Anti-eNOS (Phospho-S1179) Antibody

| Catalog # | Source | Reactivity | Applications |
|--------------------------|---|------------------|--------------|
| CPA5759 | Rabbit | H, M, R, B, D, P | WB, IH |
| Description | Rabbit polyclonal antibody to eNOS (Phospho-S1179) | | |
| Immunogen | KLH-conjugated synthetic phosphopeptide corresponding to residues surrounding S1179 of human eNOS protein. The exact sequence is proprietary. | | |
| Purification | The antibody was purified by immunogen affinity chromatography. | | |
| Specificity | Recognizes endogenous levels of eNOS protein only when phosphorylated at S1179. | | |
| Clonality | Polyclonal | | |
| Conjugation | | | |
| Form | Liquid in 0.42% Potassium phosphate, 0.87% Sodium chloride, pH 7.3, 30% glycerol, and 0.01% sodium azide. | | |
| Dilution | WB (1/500 - 1/1000), IH (1/50 - 1/100) | | |
| Gene Symbol | NOS3 | | |
| Alternative Names | Nitric oxide synthase endothelial; Constitutive NOS; cNOS; EC-NOS; Endothelial NOS; eNOS; NOS type III; NOSIII | | |
| Entrez Gene | 4846 (Human); 18127 (Mouse); 24600 (Rat) | | |
| SwissProt | P29474 (Human); P70313 (Mouse); Q62600 (Rat) | | |
| Storage/Stability | Shipped at 4°C. Upon delivery aliquot and store at -20°C for one year. Avoid freeze/thaw cycles. | | |

Application key: E- ELISA, WB- Western blot, IH- Immunohistochemistry, IF- Immunofluorescence, FC- Flow cytometry, IC- Immunocytochemistry, IP- Immunoprecipitation, CHIP- Chromatin Immunoprecipitation, EMSA- Electrophoretic Mobility Shift Assay, BL- Blocking, SE- Sandwich ELISA, CBE- Cell-based ELISA, RNAi- RNA interference

Species reactivity key: H- Human, M- Mouse, R- Rat, B- Bovine, C- Chicken, D- Dog, G- Goat, Mk- Monkey, P- Pig, Rb- Rabbit, S- Sheep, Z- Zebrafish

COHESION BIOSCIENCES LIMITED

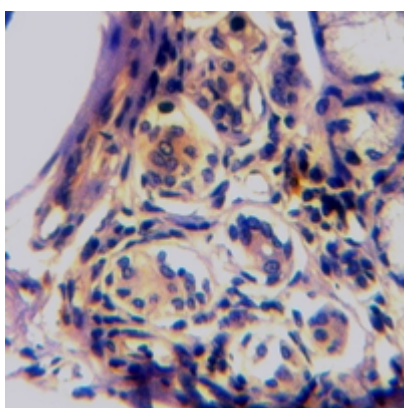
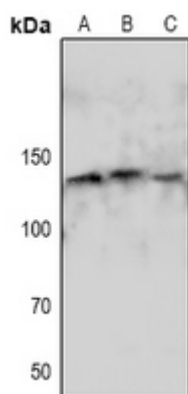
WEB
www.cohesionbio.com

ORDER
order@cohesionbio.com

SUPPORT
techsupport@cohesionbio.com

CUSTOM
custom@cohesionbio.com

Product Data Sheet



Western blot analysis of eNOS (Phospho-S1179) expression in mouse spleen (A), mouse liver (B), rat spleen (C) whole cell lysates. (Predicted band size: 133; 69 kD; Observed band size: 140 kD)

Immunohistochemical analysis of eNOS (Phospho-S1179) staining in human tonsil cancer formalin fixed paraffin embedded tissue section. The section was pre-treated using heat mediated antigen retrieval with sodium citrate buffer (pH 6.0). The section was then incubated with the antibody at room temperature and detected using an HRP conjugated compact polymer system. DAB was used as the chromogen. The section was then counterstained with haematoxylin and mounted with DPX.

Application key: E- ELISA, WB- Western blot, IH- Immunohistochemistry, IF- Immunofluorescence, FC- Flow cytometry, IC- Immunocytochemistry, IP- Immunoprecipitation, CHIP- Chromatin Immunoprecipitation, EMSA- Electrophoretic Mobility Shift Assay, BL- Blocking, SE- Sandwich ELISA, CBE- Cell-based ELISA, RNAi- RNA interference

Species reactivity key: H- Human, M- Mouse, R- Rat, B- Bovine, C- Chicken, D- Dog, G- Goat, Mk- Monkey, P- Pig, Rb- Rabbit, S- Sheep, Z- Zebrafish

COHESION BIOSCIENCES LIMITED

WEB

www.cohesionbio.com

ORDER

order@cohesionbio.com

SUPPORT

techsupport@cohesionbio.com

CUSTOM

custom@cohesionbio.com