

## Anti-TPH1 (Phospho-S58) Antibody

| Catalog #                | Source  | Reactivity     | Applications |
|--------------------------|---|----------------|--------------|
| CPA5752                  | Rabbit  | H, M, R, C, Rb | WB, IH       |
| <b>Description</b>       | Rabbit polyclonal antibody to TPH1 (Phospho-S58)  |                |              |
| <b>Immunogen</b>         | KLH-conjugated synthetic phosphopeptide corresponding to residues surrounding S58 of human TPH1 protein. The exact sequence is proprietary. |                |              |
| <b>Purification</b>      | The antibody was purified by immunogen affinity chromatography.   |                |              |
| <b>Specificity</b>       | Recognizes endogenous levels of TPH1 protein only when phosphorylated at S58.   |                |              |
| <b>Clonality</b>         | Polyclonal  |                |              |
| <b>Conjugation</b>       |   |                |              |
| <b>Form</b>              | Liquid in 0.42% Potassium phosphate, 0.87% Sodium chloride, pH 7.3, 30% glycerol, and 0.01% sodium azide.                                   |                |              |
| <b>Dilution</b>          | WB (1/500 - 1/1000), IH (1/50 - 1/100)  |                |              |
| <b>Gene Symbol</b>       | TPH1  |                |              |
| <b>Alternative Names</b> | TPH; TPRH; TRPH; Tryptophan 5-hydroxylase 1; Tryptophan 5-monoxygenase 1  |                |              |
| <b>Entrez Gene</b>       | 7166 (Human); 21990 (Mouse); 24848 (Rat)  |                |              |
| <b>SwissProt</b>         | P17752 (Human); P17532 (Mouse); P09810 (Rat)  |                |              |
| <b>Storage/Stability</b> | Shipped at 4°C. Upon delivery aliquot and store at -20°C for one year. Avoid freeze/thaw cycles.  |                |              |

**Application key:** E- ELISA, WB- Western blot, IH- Immunohistochemistry, IF- Immunofluorescence, FC- Flow cytometry, IC- Immunocytochemistry, IP- Immunoprecipitation, CHIP- Chromatin Immunoprecipitation, EMSA- Electrophoretic Mobility Shift Assay, BL- Blocking, SE- Sandwich ELISA, CBE- Cell-based ELISA, RNAi- RNA interference

**Species reactivity key:** H- Human, M- Mouse, R- Rat, B- Bovine, C- Chicken, D- Dog, G- Goat, Mk- Monkey, P- Pig, Rb- Rabbit, S- Sheep, Z- Zebrafish

### COHESION BIOSCIENCES LIMITED

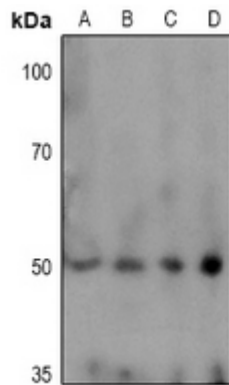
**WEB**  
[www.cohesionbio.com](http://www.cohesionbio.com)

**ORDER**  
[order@cohesionbio.com](mailto:order@cohesionbio.com)

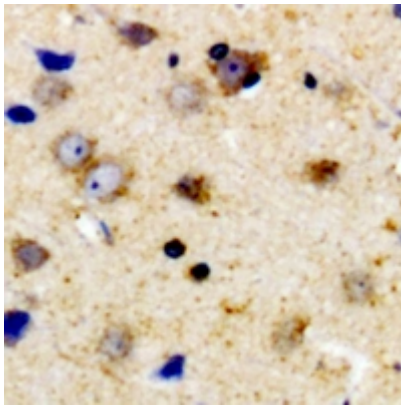
**SUPPORT**  
[techsupport@cohesionbio.com](mailto:techsupport@cohesionbio.com)

**CUSTOM**  
[custom@cohesionbio.com](mailto:custom@cohesionbio.com)

## Product Data Sheet



Western blot analysis of TPH1 (Phospho-S58) expression in HEK293T (A), THP1 (B), MCF7 (C), SGC7901 (D) whole cell lysates. (Predicted band size: 50 kD; Observed band size: 51 kD)



Immunohistochemical analysis of TPH1 (Phospho-S58) staining in human brain formalin fixed paraffin embedded tissue section. The section was pre-treated using heat mediated antigen retrieval with sodium citrate buffer (pH 6.0). The section was then incubated with the antibody at room temperature and detected using an HRP conjugated compact polymer system. DAB was used as the chromogen. The section was then counterstained with haematoxylin and mounted with DPX.

**Application key:** E- ELISA, WB- Western blot, IH- Immunohistochemistry, IF- Immunofluorescence, FC- Flow cytometry, IC- Immunocytochemistry, IP- Immunoprecipitation, CHIP- Chromatin Immunoprecipitation, EMSA- Electrophoretic Mobility Shift Assay, BL- Blocking, SE- Sandwich ELISA, CBE- Cell-based ELISA, RNAi- RNA interference

**Species reactivity key:** H- Human, M- Mouse, R- Rat, B- Bovine, C- Chicken, D- Dog, G- Goat, Mk- Monkey, P- Pig, Rb- Rabbit, S- Sheep, Z- Zebrafish

### COHESION BIOSCIENCES LIMITED

**WEB**

[www.cohesionbio.com](http://www.cohesionbio.com)

**ORDER**

[order@cohesionbio.com](mailto:order@cohesionbio.com)

**SUPPORT**

[techsupport@cohesionbio.com](mailto:techsupport@cohesionbio.com)

**CUSTOM**

[custom@cohesionbio.com](mailto:custom@cohesionbio.com)