

## Anti-TBK1 Antibody

Catalog #	Source	Reactivity	Applications
CPA5544	Rabbit	H, M, R	WB, IH
<b>Description</b>	Rabbit polyclonal antibody to TBK1		
<b>Immunogen</b>	KLH-conjugated synthetic peptide encompassing a sequence within the center region of human TBK1. The exact sequence is proprietary.		
<b>Purification</b>	The antibody was purified by immunogen affinity chromatography.		
<b>Specificity</b>	Recognizes endogenous levels of TBK1 protein.		
<b>Clonality</b>	Polyclonal		
<b>Conjugation</b>			
<b>Form</b>	Liquid in 0.42% Potassium phosphate, 0.87% Sodium chloride, pH 7.3, 30% glycerol, and 0.01% sodium azide.		
<b>Dilution</b>	WB (1/500 - 1/1000), IH (1/50 - 1/100)		
<b>Gene Symbol</b>	TBK1		
<b>Alternative Names</b>	NAK; Serine/threonine-protein kinase TBK1; NF-kappa-B-activating kinase; T2K; TANK-binding kinase 1		
<b>Entrez Gene</b>	29110 (Human); 56480 (Mouse)		
<b>SwissProt</b>	Q9UHD2 (Human); Q9WUN2 (Mouse)		
<b>Storage/Stability</b>	Shipped at 4°C. Upon delivery aliquot and store at -20°C for one year. Avoid freeze/thaw cycles.		

**Application key:** E- ELISA, WB- Western blot, IH- Immunohistochemistry, IF- Immunofluorescence, FC- Flow cytometry, IC- Immunocytochemistry, IP- Immunoprecipitation, CHIP- Chromatin Immunoprecipitation, EMSA- Electrophoretic Mobility Shift Assay, BL- Blocking, SE- Sandwich ELISA, CBE- Cell-based ELISA, RNAi- RNA interference

**Species reactivity key:** H- Human, M- Mouse, R- Rat, B- Bovine, C- Chicken, D- Dog, G- Goat, Mk- Monkey, P- Pig, Rb- Rabbit, S- Sheep, Z- Zebrafish

### COHESION BIOSCIENCES LIMITED

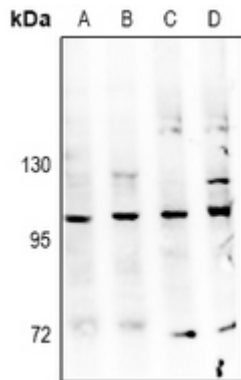
**WEB**  
[www.cohesionbio.com](http://www.cohesionbio.com)

**ORDER**  
[order@cohesionbio.com](mailto:order@cohesionbio.com)

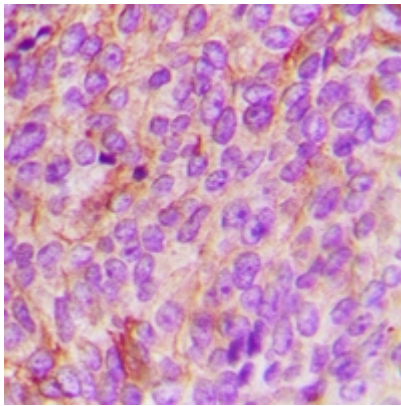
**SUPPORT**  
[techsupport@cohesionbio.com](mailto:techsupport@cohesionbio.com)

**CUSTOM**  
[custom@cohesionbio.com](mailto:custom@cohesionbio.com)

## Product Data Sheet



Western blot analysis of TBK1 expression in mouse testis (A), rat testis (B), U87MG (C), A549 (D) whole cell lysates. (Predicted band size: 83 kD; Observed band size: 100 kD)



Immunohistochemical analysis of TBK1 staining in human breast cancer formalin fixed paraffin embedded tissue section. The section was pre-treated using heat mediated antigen retrieval with sodium citrate buffer (pH 6.0). The section was then incubated with the antibody at room temperature and detected using an HRP conjugated compact polymer system. DAB was used as the chromogen. The section was then counterstained with haematoxylin and mounted with DPX.

**Application key:** E- ELISA, WB- Western blot, IH- Immunohistochemistry, IF- Immunofluorescence, FC- Flow cytometry, IC- Immunocytochemistry, IP- Immunoprecipitation, CHIP- Chromatin Immunoprecipitation, EMSA- Electrophoretic Mobility Shift Assay, BL- Blocking, SE- Sandwich ELISA, CBE- Cell-based ELISA, RNAi- RNA interference

**Species reactivity key:** H- Human, M- Mouse, R- Rat, B- Bovine, C- Chicken, D- Dog, G- Goat, Mk- Monkey, P- Pig, Rb- Rabbit, S- Sheep, Z- Zebrafish

### COHESION BIOSCIENCES LIMITED

**WEB**

[www.cohesionbio.com](http://www.cohesionbio.com)

**ORDER**

[order@cohesionbio.com](mailto:order@cohesionbio.com)

**SUPPORT**

[techsupport@cohesionbio.com](mailto:techsupport@cohesionbio.com)

**CUSTOM**

[custom@cohesionbio.com](mailto:custom@cohesionbio.com)