

Anti-Acinus (Phospho-S1180) Antibody

Catalog #	Source	Reactivity	Applications
CPA5535	Rabbit	H, M, R	WB
Description	Rabbit polyclonal antibody to Acinus (Phospho-S1180)		
Immunogen	KLH-conjugated synthetic phosphopeptide corresponding to residues surrounding S1180 of human Acinus protein. The exact sequence is proprietary.		
Purification	The antibody was purified by immunogen affinity chromatography.		
Specificity	Recognizes endogenous levels of Acinus protein only when phosphorylated at S1180.		
Clonality	Polyclonal		
Conjugation			
Form	Liquid in 0.42% Potassium phosphate, 0.87% Sodium chloride, pH 7.3, 30% glycerol, and 0.01% sodium azide.		
Dilution	WB (1/500 - 1/1000)		
Gene Symbol	ACIN1		
Alternative Names	ACIN1; ACINUS; KIAA0670; Apoptotic chromatin condensation inducer in the nucleus; Acinus; SCAF4; KIAA1172; SFRS15; Splicing factor arginine/serine-rich 15; CTD-binding SR-like protein RA4; SR-related and CTD-associated factor 4; PNISR; C6orf111; SFRS18; SRRP130; HSPC261; HSPC306; Arginine/serine-rich protein PNISR; PNN-interacting serine/arginine-rich protein; SR-related protein; SR-rich protein; Serine/arginine-rich-splicing regulatory protein 130; SRrp130; Splicing factor arginine/serine-rich 130; Splicing factor arginine/serine-rich 18; RBM39; HCC1; RNPC2; RNA-binding protein 39; Hepatocellular carcinoma protein 1; RNA-binding motif protein 39; RNA-binding region-containing protein 2; Splicing factor HCC1		

Application key: E- ELISA, WB- Western blot, IH- Immunohistochemistry, IF- Immunofluorescence, FC- Flow cytometry, IC- Immunocytochemistry, IP- Immunoprecipitation, CHIP- Chromatin Immunoprecipitation, EMSA- Electrophoretic Mobility Shift Assay, BL- Blocking, SE- Sandwich ELISA, CBE- Cell-based ELISA, RNAi- RNA interference

Species reactivity key: H- Human, M- Mouse, R- Rat, B- Bovine, C- Chicken, D- Dog, G- Goat, Mk- Monkey, P- Pig, Rb- Rabbit, S- Sheep, Z- Zebrafish

COHESION BIOSCIENCES LIMITED

WEB
www.cohesionbio.com

ORDER
order@cohesionbio.com

SUPPORT
techsupport@cohesionbio.com

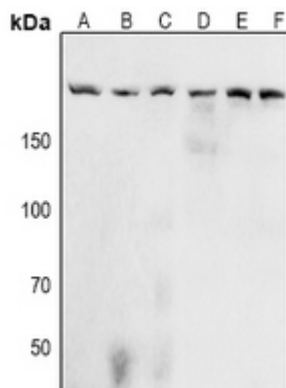
CUSTOM
custom@cohesionbio.com

Product Data Sheet

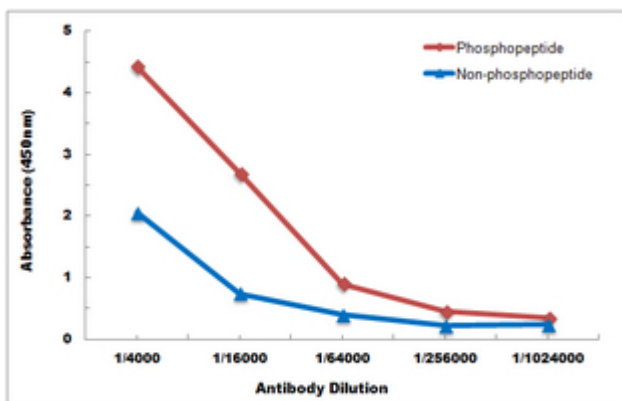
Entrez Gene 22985, 57466, 25957, 9584 (Human); 56215, 170791 (Mouse)

SwissProt Q9UKV3, O95104, Q8TF01, Q14498 (Human); Q9JIX8, A2AJT4, Q8VH51 (Mouse); Q63627 (Rat)

Storage/Stability Shipped at 4°C. Upon delivery aliquot and store at -20°C for one year. Avoid freeze/thaw cycles.



Western blot analysis of Acinus (Phospho-S1180) expression in A549 (A), Hela (B), Jurkat (C), NIH3T3 (D), H9C2 (E), PC12 (F) whole cell lysates. (Predicted band size: 151; 125; 92; 59 kD; Observed band size: 210 kD)



Direct ELISA antibody dose-response curve using Anti-Acinus (Phospho-S1180) Antibody. Antigen (Phosphopeptide and non-phosphopeptide) concentration is 5 ug/ml. Goat Anti-Rabbit IgG (H&L) - HRP was used as the secondary antibody, and signal was developed by TMB substrate.

Application key: E- ELISA, WB- Western blot, IH- Immunohistochemistry, IF- Immunofluorescence, FC- Flow cytometry, IC- Immunocytochemistry, IP- Immunoprecipitation, CHIP- Chromatin Immunoprecipitation, EMSA- Electrophoretic Mobility Shift Assay, BL- Blocking, SE- Sandwich ELISA, CBE- Cell-based ELISA, RNAi- RNA interference

Species reactivity key: H- Human, M- Mouse, R- Rat, B- Bovine, C- Chicken, D- Dog, G- Goat, Mk- Monkey, P- Pig, Rb- Rabbit, S- Sheep, Z- Zebrafish

COHESION BIOSCIENCES LIMITED

WEB
www.cohesionbio.com

ORDER
order@cohesionbio.com

SUPPORT
techsupport@cohesionbio.com

CUSTOM
custom@cohesionbio.com