

## Anti-ITPKA Antibody

| Catalog #                | Source   | Reactivity       | Applications |
|--------------------------|--|------------------|--------------|
| CPA5443                  | Rabbit   | H, M, R, B, D, P | WB, IF/IC    |
| <b>Description</b>       | Rabbit polyclonal antibody to ITPKA  |                  |              |
| <b>Immunogen</b>         | KLH-conjugated synthetic peptide encompassing a sequence within the C-term region of human ITPKA. The exact sequence is proprietary. |                  |              |
| <b>Purification</b>      | The antibody was purified by immunogen affinity chromatography.  |                  |              |
| <b>Specificity</b>       | Recognizes endogenous levels of ITPKA protein.   |                  |              |
| <b>Clonality</b>         | Polyclonal   |                  |              |
| <b>Conjugation</b>       |  |                  |              |
| <b>Form</b>              | Liquid in 0.42% Potassium phosphate, 0.87% Sodium chloride, pH 7.3, 30% glycerol, and 0.01% sodium azide.                            |                  |              |
| <b>Dilution</b>          | WB (1/500 - 1/1000), IF/IC (1/100 - 1/500)   |                  |              |
| <b>Gene Symbol</b>       | ITPKA  |                  |              |
| <b>Alternative Names</b> | Inositol-trisphosphate 3-kinase A; Inositol 145-trisphosphate 3-kinase A; IP3 3-kinase A; IP3K A; InsP 3-kinase A                    |                  |              |
| <b>Entrez Gene</b>       | 3706 (Human); 228550 (Mouse); 81677 (Rat)  |                  |              |
| <b>SwissProt</b>         | P23677 (Human); Q8R071 (Mouse); P17105 (Rat)   |                  |              |
| <b>Storage/Stability</b> | Shipped at 4°C. Upon delivery aliquot and store at -20°C for one year. Avoid freeze/thaw cycles.                                     |                  |              |

**Application key:** E- ELISA, WB- Western blot, IH- Immunohistochemistry, IF- Immunofluorescence, FC- Flow cytometry, IC- Immunocytochemistry, IP- Immunoprecipitation, CHIP- Chromatin Immunoprecipitation, EMSA- Electrophoretic Mobility Shift Assay, BL- Blocking, SE- Sandwich ELISA, CBE- Cell-based ELISA, RNAi- RNA interference

**Species reactivity key:** H- Human, M- Mouse, R- Rat, B- Bovine, C- Chicken, D- Dog, G- Goat, Mk- Monkey, P- Pig, Rb- Rabbit, S- Sheep, Z- Zebrafish

### COHESION BIOSCIENCES LIMITED

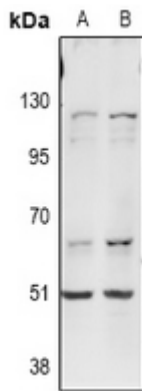
**WEB**  
www.cohesionbio.com

**ORDER**  
order@cohesionbio.com

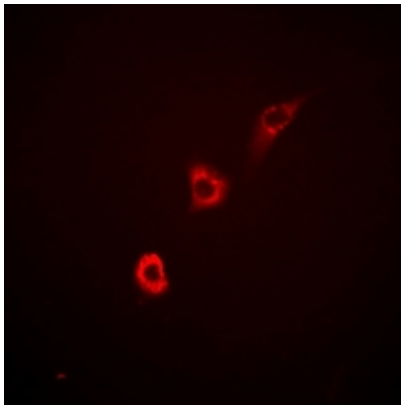
**SUPPORT**  
techsupport@cohesionbio.com

**CUSTOM**  
custom@cohesionbio.com

## Product Data Sheet



Western blot analysis of ITPKA expression in A549 (A), LO2 (B) whole cell lysates. (Predicted band size: 51 kD; Observed band size: 51 kD)



Immunofluorescent analysis of ITPKA staining in HepG2 cells. Formalin-fixed cells were permeabilized with 0.1% Triton X-100 in TBS for 5-10 minutes and blocked with 3% BSA-PBS for 30 minutes at room temperature. Cells were probed with the primary antibody in 3% BSA-PBS and incubated overnight at 4 °C in a humidified chamber. Cells were washed with PBST and incubated with Alexa Fluor 647-conjugated secondary antibody (red) in PBS at room temperature in the dark.

**Application key:** E- ELISA, WB- Western blot, IH- Immunohistochemistry, IF- Immunofluorescence, FC- Flow cytometry, IC- Immunocytochemistry, IP- Immunoprecipitation, CHIP- Chromatin Immunoprecipitation, EMSA- Electrophoretic Mobility Shift Assay, BL- Blocking, SE- Sandwich ELISA, CBE- Cell-based ELISA, RNAi- RNA interference

**Species reactivity key:** H- Human, M- Mouse, R- Rat, B- Bovine, C- Chicken, D- Dog, G- Goat, Mk- Monkey, P- Pig, Rb- Rabbit, S- Sheep, Z- Zebrafish

### COHESION BIOSCIENCES LIMITED

**WEB**

[www.cohesionbio.com](http://www.cohesionbio.com)

**ORDER**

[order@cohesionbio.com](mailto:order@cohesionbio.com)

**SUPPORT**

[techsupport@cohesionbio.com](mailto:techsupport@cohesionbio.com)

**CUSTOM**

[custom@cohesionbio.com](mailto:custom@cohesionbio.com)