

## Anti-POLR3A Antibody

| Catalog #                | Source   | Reactivity                     | Applications |
|--------------------------|--|--------------------------------|--------------|
| CPA5205                  | Rabbit   | H, M, R, B, C, D, Mk, P, Rb, Z | WB, IH       |
| <b>Description</b>       | Rabbit polyclonal antibody to POLR3A   |                                |              |
| <b>Immunogen</b>         | KLH-conjugated synthetic peptide encompassing a sequence within the N-term region of human POLR3A. The exact sequence is proprietary.  |                                |              |
| <b>Purification</b>      | The antibody was purified by immunogen affinity chromatography.  |                                |              |
| <b>Specificity</b>       | Recognizes endogenous levels of POLR3A protein.  |                                |              |
| <b>Clonality</b>         | Polyclonal   |                                |              |
| <b>Conjugation</b>       |  |                                |              |
| <b>Form</b>              | Liquid in 0.42% Potassium phosphate, 0.87% Sodium chloride, pH 7.3, 30% glycerol, and 0.01% sodium azide.  |                                |              |
| <b>Dilution</b>          | WB (1/500 - 1/1000), IH (1/100 - 1/200)  |                                |              |
| <b>Gene Symbol</b>       | POLR3A   |                                |              |
| <b>Alternative Names</b> | DNA-directed RNA polymerase III subunit RPC1; RNA polymerase III subunit C1; DNA-directed RNA polymerase III largest subunit; DNA-directed RNA polymerase III subunit A; RNA polymerase III 155 kDa subunit; RPC155; RNA polymerase III subunit C160 |                                |              |
| <b>Entrez Gene</b>       | 11128 (Human)  |                                |              |
| <b>SwissProt</b>         | O14802 (Human)   |                                |              |
| <b>Storage/Stability</b> | Shipped at 4°C. Upon delivery aliquot and store at -20°C for one year. Avoid freeze/thaw cycles.   |                                |              |

**Application key:** E- ELISA, WB- Western blot, IH- Immunohistochemistry, IF- Immunofluorescence, FC- Flow cytometry, IC- Immunocytochemistry, IP- Immunoprecipitation, ChIP- Chromatin Immunoprecipitation, EMSA- Electrophoretic Mobility Shift Assay, BL- Blocking, SE- Sandwich ELISA, CBE- Cell-based ELISA, RNAi- RNA interference

**Species reactivity key:** H- Human, M- Mouse, R- Rat, B- Bovine, C- Chicken, D- Dog, G- Goat, Mk- Monkey, P- Pig, Rb- Rabbit, S- Sheep, Z- Zebrafish

### COHESION BIOSCIENCES LIMITED

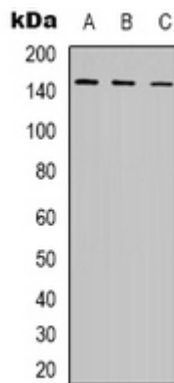
**WEB**  
[www.cohesionbio.com](http://www.cohesionbio.com)

**ORDER**  
[order@cohesionbio.com](mailto:order@cohesionbio.com)

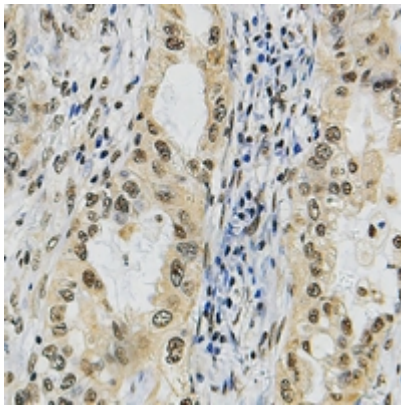
**SUPPORT**  
[techsupport@cohesionbio.com](mailto:techsupport@cohesionbio.com)

**CUSTOM**  
[custom@cohesionbio.com](mailto:custom@cohesionbio.com)

## Product Data Sheet



Western blot analysis of POLR3A expression in K562 (A), MCF7 (B), COS7 (C) whole cell lysates. (Predicted band size: 155 kD; Observed band size: 156 kD)



Immunohistochemical analysis of POLR3A staining in human lung cancer formalin fixed paraffin embedded tissue section. The section was pre-treated using heat mediated antigen retrieval with sodium citrate buffer (pH 6.0). The section was then incubated with the antibody at room temperature and detected using an HRP conjugated compact polymer system. DAB was used as the chromogen. The section was then counterstained with haematoxylin and mounted with DPX.

**Application key:** E- ELISA, WB- Western blot, IH- Immunohistochemistry, IF- Immunofluorescence, FC- Flow cytometry, IC- Immunocytochemistry, IP- Immunoprecipitation, CHIP- Chromatin Immunoprecipitation, EMSA- Electrophoretic Mobility Shift Assay, BL- Blocking, SE- Sandwich ELISA, CBE- Cell-based ELISA, RNAi- RNA interference

**Species reactivity key:** H- Human, M- Mouse, R- Rat, B- Bovine, C- Chicken, D- Dog, G- Goat, Mk- Monkey, P- Pig, Rb- Rabbit, S- Sheep, Z- Zebrafish

### COHESION BIOSCIENCES LIMITED

**WEB**

[www.cohesionbio.com](http://www.cohesionbio.com)

**ORDER**

[order@cohesionbio.com](mailto:order@cohesionbio.com)

**SUPPORT**

[techsupport@cohesionbio.com](mailto:techsupport@cohesionbio.com)

**CUSTOM**

[custom@cohesionbio.com](mailto:custom@cohesionbio.com)