

Anti-Arylsulfatase G Antibody

| Catalog # | Source | Reactivity | Applications |
|--------------------------|--|------------|--------------|
| CPA5190 | Rabbit | H, M, R | WB, IH |
| Description | Rabbit polyclonal antibody to Arylsulfatase G | | |
| Immunogen | KLH-conjugated synthetic peptide encompassing a sequence within the center region of human Arylsulfatase G. The exact sequence is proprietary. | | |
| Purification | The antibody was purified by immunogen affinity chromatography. | | |
| Specificity | Recognizes endogenous levels of Arylsulfatase G protein. | | |
| Clonality | Polyclonal | | |
| Conjugation | | | |
| Form | Liquid in 0.42% Potassium phosphate, 0.87% Sodium chloride, pH 7.3, 30% glycerol, and 0.01% sodium azide. | | |
| Dilution | WB (1/500 - 1/1000), IH (1/100 - 1/200) | | |
| Gene Symbol | ARSG | | |
| Alternative Names | KIAA1001; Arylsulfatase G; ASG | | |
| Entrez Gene | 22901 (Human); 74008 (Mouse); 303631 (Rat) | | |
| SwissProt | Q96EG1 (Human); Q3TYD4 (Mouse); Q32KJ9 (Rat) | | |
| Storage/Stability | Shipped at 4°C. Upon delivery aliquot and store at -20°C for one year. Avoid freeze/thaw cycles. | | |

Application key: E- ELISA, WB- Western blot, IH- Immunohistochemistry, IF- Immunofluorescence, FC- Flow cytometry, IC- Immunocytochemistry, IP- Immunoprecipitation, CHIP- Chromatin Immunoprecipitation, EMSA- Electrophoretic Mobility Shift Assay, BL- Blocking, SE- Sandwich ELISA, CBE- Cell-based ELISA, RNAi- RNA interference

Species reactivity key: H- Human, M- Mouse, R- Rat, B- Bovine, C- Chicken, D- Dog, G- Goat, Mk- Monkey, P- Pig, Rb- Rabbit, S- Sheep, Z- Zebrafish

COHESION BIOSCIENCES LIMITED

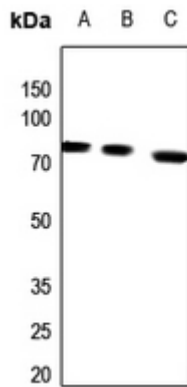
WEB
www.cohesionbio.com

ORDER
order@cohesionbio.com

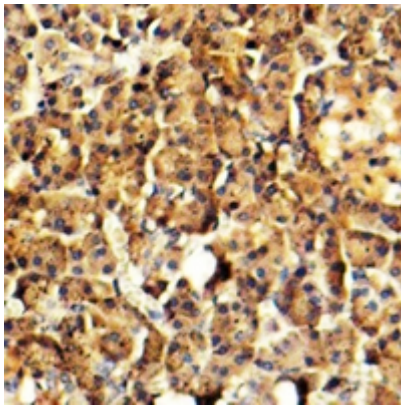
SUPPORT
techsupport@cohesionbio.com

CUSTOM
custom@cohesionbio.com

Product Data Sheet



Western blot analysis of Arylsulfatase G expression in HEK293T (A), Hela (B), rat liver (C) whole cell lysates. (Predicted band size: 57 kD; Observed band size: 70 kD)



Immunohistochemical analysis of Arylsulfatase G staining in human pancreas formalin fixed paraffin embedded tissue section. The section was pre-treated using heat mediated antigen retrieval with sodium citrate buffer (pH 6.0). The section was then incubated with the antibody at room temperature and detected using an HRP conjugated compact polymer system. DAB was used as the chromogen. The section was then counterstained with haematoxylin and mounted with DPX.

Application key: E- ELISA, WB- Western blot, IH- Immunohistochemistry, IF- Immunofluorescence, FC- Flow cytometry, IC- Immunocytochemistry, IP- Immunoprecipitation, CHIP- Chromatin Immunoprecipitation, EMSA- Electrophoretic Mobility Shift Assay, BL- Blocking, SE- Sandwich ELISA, CBE- Cell-based ELISA, RNAi- RNA interference

Species reactivity key: H- Human, M- Mouse, R- Rat, B- Bovine, C- Chicken, D- Dog, G- Goat, Mk- Monkey, P- Pig, Rb- Rabbit, S- Sheep, Z- Zebrafish

COHESION BIOSCIENCES LIMITED

WEB

www.cohesionbio.com

ORDER

order@cohesionbio.com

SUPPORT

techsupport@cohesionbio.com

CUSTOM

custom@cohesionbio.com