

## Anti-YTHDF1 Antibody

| Catalog #                | Source  | Reactivity | Applications |
|--------------------------|---|------------|--------------|
| CPA5150                  | Rabbit  | H          | WB, IH       |
| <b>Description</b>       | Rabbit polyclonal antibody to YTHDF1  |            |              |
| <b>Immunogen</b>         | KLH-conjugated synthetic peptide encompassing a sequence within the N-term region of human YTHDF1. The exact sequence is proprietary. |            |              |
| <b>Purification</b>      | The antibody was purified by immunogen affinity chromatography.   |            |              |
| <b>Specificity</b>       | Recognizes endogenous levels of YTHDF1 protein.   |            |              |
| <b>Clonality</b>         | Polyclonal  |            |              |
| <b>Conjugation</b>       |   |            |              |
| <b>Form</b>              | Liquid in 0.42% Potassium phosphate, 0.87% Sodium chloride, pH 7.3, 30% glycerol, and 0.01% sodium azide.                             |            |              |
| <b>Dilution</b>          | WB (1/500 - 1/1000), IH (1/100 - 1/200)   |            |              |
| <b>Gene Symbol</b>       | YTHDF1  |            |              |
| <b>Alternative Names</b> | C20orf21; YTH domain-containing family protein 1; Dermatomyositis associated with cancer putative autoantigen 1; DACA-1               |            |              |
| <b>Entrez Gene</b>       | 54915 (Human)   |            |              |
| <b>SwissProt</b>         | Q9BYJ9 (Human)  |            |              |
| <b>Storage/Stability</b> | Shipped at 4°C. Upon delivery aliquot and store at -20°C for one year. Avoid freeze/thaw cycles.                                      |            |              |

**Application key:** E- ELISA, WB- Western blot, IH- Immunohistochemistry, IF- Immunofluorescence, FC- Flow cytometry, IC- Immunocytochemistry, IP- Immunoprecipitation, CHIP- Chromatin Immunoprecipitation, EMSA- Electrophoretic Mobility Shift Assay, BL- Blocking, SE- Sandwich ELISA, CBE- Cell-based ELISA, RNAi- RNA interference

**Species reactivity key:** H- Human, M- Mouse, R- Rat, B- Bovine, C- Chicken, D- Dog, G- Goat, Mk- Monkey, P- Pig, Rb- Rabbit, S- Sheep, Z- Zebrafish

### COHESION BIOSCIENCES LIMITED

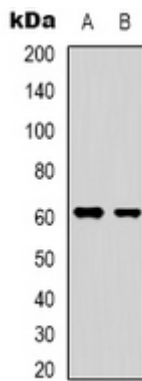
**WEB**  
[www.cohesionbio.com](http://www.cohesionbio.com)

**ORDER**  
[order@cohesionbio.com](mailto:order@cohesionbio.com)

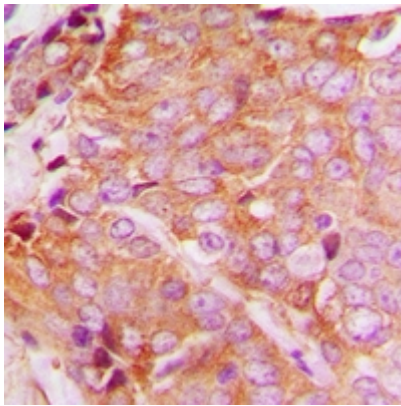
**SUPPORT**  
[techsupport@cohesionbio.com](mailto:techsupport@cohesionbio.com)

**CUSTOM**  
[custom@cohesionbio.com](mailto:custom@cohesionbio.com)

## Product Data Sheet



Western blot analysis of YTHDF1 expression in HepG2 (A), HEK293T (B) whole cell lysates. (Predicted band size: 60 kD; Observed band size: 61; 20 kD)



Immunohistochemical analysis of YTHDF1 staining in human breast cancer formalin fixed paraffin embedded tissue section. The section was pre-treated using heat mediated antigen retrieval with sodium citrate buffer (pH 6.0). The section was then incubated with the antibody at room temperature and detected using an HRP conjugated compact polymer system. DAB was used as the chromogen. The section was then counterstained with haematoxylin and mounted with DPX.

**Application key:** E- ELISA, WB- Western blot, IH- Immunohistochemistry, IF- Immunofluorescence, FC- Flow cytometry, IC- Immunocytochemistry, IP- Immunoprecipitation, CHIP- Chromatin Immunoprecipitation, EMSA- Electrophoretic Mobility Shift Assay, BL- Blocking, SE- Sandwich ELISA, CBE- Cell-based ELISA, RNAi- RNA interference

**Species reactivity key:** H- Human, M- Mouse, R- Rat, B- Bovine, C- Chicken, D- Dog, G- Goat, Mk- Monkey, P- Pig, Rb- Rabbit, S- Sheep, Z- Zebrafish

### COHESION BIOSCIENCES LIMITED

**WEB**

[www.cohesionbio.com](http://www.cohesionbio.com)

**ORDER**

[order@cohesionbio.com](mailto:order@cohesionbio.com)

**SUPPORT**

[techsupport@cohesionbio.com](mailto:techsupport@cohesionbio.com)

**CUSTOM**

[custom@cohesionbio.com](mailto:custom@cohesionbio.com)