

## Anti-PRKD1/2/3 (Phospho-S738/S742) Antibody

| Catalog #                | Source  | Reactivity           | Applications |
|--------------------------|---|----------------------|--------------|
| CPA4448                  | Rabbit  | H, M, R, B, Mk, P, S | WB, IH       |
| <b>Description</b>       | Rabbit polyclonal antibody to PRKD1/2/3 (Phospho-S738/S742)   |                      |              |
| <b>Immunogen</b>         | KLH-conjugated synthetic phosphopeptide corresponding to residues surrounding S738/S742 of human PRKD1/2/3 protein. The exact sequence is proprietary.  |                      |              |
| <b>Purification</b>      | The antibody was purified by immunogen affinity chromatography.   |                      |              |
| <b>Specificity</b>       | Recognizes endogenous levels of PRKD1/2/3 protein only when phosphorylated at S738/S742.  |                      |              |
| <b>Clonality</b>         | Polyclonal  |                      |              |
| <b>Conjugation</b>       |   |                      |              |
| <b>Form</b>              | Liquid in 0.42% Potassium phosphate, 0.87% Sodium chloride, pH 7.3, 30% glycerol, and 0.01% sodium azide.   |                      |              |
| <b>Dilution</b>          | WB (1/500 - 1/1000), IH (1/100 - 1/200)   |                      |              |
| <b>Gene Symbol</b>       | PRKD1; PRKD2; PRKD3   |                      |              |
| <b>Alternative Names</b> | PRKD1; PKD; PKD1; PRKCM; Serine/threonine-protein kinase D1; Protein kinase C mu type; Protein kinase D; nPKC-D1; nPKC-mu; PRKD2; PKD2; HSPC187; Serine/threonine-protein kinase D2; nPKC-D2; PRKD3; EPK2; PRKCN; Serine/threonine-protein kinase D3; Protein k |                      |              |
| <b>Entrez Gene</b>       | 5587, 25865, 23683 (Human); 18760, 101540, 75292 (Mouse); 85421, 292658 (Rat)   |                      |              |
| <b>SwissProt</b>         | Q15139, Q9BZL6, O94806 (Human); Q62101, Q8BZ03, Q8K1Y2 (Mouse); Q9WTQ1, Q5XIS9 (Rat)  |                      |              |
| <b>Storage/Stability</b> | Shipped at 4°C. Upon delivery aliquot and store at -20°C for one year. Avoid freeze/thaw cycles.  |                      |              |

**Application key:** E- ELISA, WB- Western blot, IH- Immunohistochemistry, IF- Immunofluorescence, FC- Flow cytometry, IC- Immunocytochemistry, IP- Immunoprecipitation, CHIP- Chromatin Immunoprecipitation, EMSA- Electrophoretic Mobility Shift Assay, BL- Blocking, SE- Sandwich ELISA, CBE- Cell-based ELISA, RNAi- RNA interference

**Species reactivity key:** H- Human, M- Mouse, R- Rat, B- Bovine, C- Chicken, D- Dog, G- Goat, Mk- Monkey, P- Pig, Rb- Rabbit, S- Sheep, Z- Zebrafish

### COHESION BIOSCIENCES LIMITED

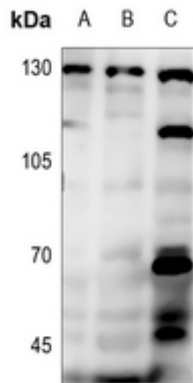
**WEB**  
www.cohesionbio.com

**ORDER**  
order@cohesionbio.com

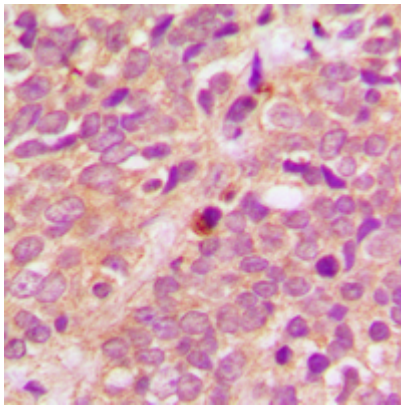
**SUPPORT**  
techsupport@cohesionbio.com

**CUSTOM**  
custom@cohesionbio.com

# Product Data Sheet



Western blot analysis of PRKD1/2/3 (Phospho-S738/S742) expression in HEK293T (A), H446 (B), H1792 (C) whole cell lysates. (Predicted band size: 101; 96; 100 kD; Observed band size: 130 kD)



Immunohistochemical analysis of PRKD1/2/3 (Phospho-S738/S742) staining in human breast cancer formalin fixed paraffin embedded tissue section. The section was pre-treated using heat mediated antigen retrieval with sodium citrate buffer (pH 6.0). The section was then incubated with the antibody at room temperature and detected using an HRP conjugated compact polymer system. DAB was used as the chromogen. The section was then counterstained with haematoxylin and mounted with DPX.

**Application key:** E- ELISA, WB- Western blot, IH- Immunohistochemistry, IF- Immunofluorescence, FC- Flow cytometry, IC- Immunocytochemistry, IP- Immunoprecipitation, CHIP- Chromatin Immunoprecipitation, EMSA- Electrophoretic Mobility Shift Assay, BL- Blocking, SE- Sandwich ELISA, CBE- Cell-based ELISA, RNAi- RNA interference

**Species reactivity key:** H- Human, M- Mouse, R- Rat, B- Bovine, C- Chicken, D- Dog, G- Goat, Mk- Monkey, P- Pig, Rb- Rabbit, S- Sheep, Z- Zebrafish

## COHESION BIOSCIENCES LIMITED

**WEB**

[www.cohesionbio.com](http://www.cohesionbio.com)

**ORDER**

[order@cohesionbio.com](mailto:order@cohesionbio.com)

**SUPPORT**

[techsupport@cohesionbio.com](mailto:techsupport@cohesionbio.com)

**CUSTOM**

[custom@cohesionbio.com](mailto:custom@cohesionbio.com)