

## Anti-ZIC1/2/3/4/5 Antibody

Catalog #	Source	Reactivity	Applications
CPA4317	Rabbit	H, M, R, C	WB, IF/IC
<b>Description</b>	Rabbit polyclonal antibody to ZIC1/2/3/4/5		
<b>Immunogen</b>	KLH-conjugated synthetic peptide encompassing a sequence within the center region of human ZIC1/2/3/4/5. The exact sequence is proprietary.		
<b>Purification</b>	The antibody was purified by immunogen affinity chromatography.		
<b>Specificity</b>	Recognizes endogenous levels of ZIC1/2/3/4/5 protein.		
<b>Clonality</b>	Polyclonal		
<b>Conjugation</b>			
<b>Form</b>	Liquid in 0.42% Potassium phosphate, 0.87% Sodium chloride, pH 7.3, 30% glycerol, and 0.01% sodium azide.		
<b>Dilution</b>	WB (1/500 - 1/1000), IF/IC (1/50 - 1/200)		
<b>Gene Symbol</b>	ZIC1		
<b>Alternative Names</b>	ZIC1; ZIC; ZNF201; Zinc finger protein ZIC 1; Zinc finger protein 201; Zinc finger protein of the cerebellum 1; ZIC2; Zinc finger protein ZIC 2; Zinc finger protein of the cerebellum 2; ZIC3; ZNF203; Zinc finger protein ZIC 3; Zinc finger protein 203; Zinc finger protein of the cerebellum 3; ZIC4; Zinc finger protein ZIC 4; Zinc finger protein of the cerebellum 4; ZIC5; Zinc finger protein ZIC 5; Zinc finger protein of the cerebellum 5		
<b>Entrez Gene</b>	7545, 7546, 7547, 84107, 85416 (Human); 22771, 22773, 22774 (Mouse)		
<b>SwissProt</b>	Q15915, O95409, O60481, Q8N9L1, Q96T25 (Human); P46684, Q62520, Q62521, Q61467 (Mouse)		
<b>Storage/Stability</b>	Shipped at 4°C. Upon delivery aliquot and store at -20°C for one year. Avoid		
<b>Application key:</b>	E- ELISA, WB- Western blot, IH- Immunohistochemistry, IF- Immunofluorescence, FC- Flow cytometry, IC- Immunocytochemistry, IP- Immunoprecipitation, ChIP- Chromatin Immunoprecipitation, EMSA- Electrophoretic Mobility Shift Assay, BL- Blocking, SE- Sandwich ELISA, CBE- Cell-based ELISA, RNAi- RNA interference		
<b>Species reactivity key:</b>	H- Human, M- Mouse, R- Rat, B- Bovine, C- Chicken, D- Dog, G- Goat, Mk- Monkey, P- Pig, Rb- Rabbit, S- Sheep, Z- Zebrafish		

### COHESION BIOSCIENCES LIMITED

**WEB**  
www.cohesionbio.com

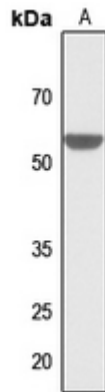
**ORDER**  
order@cohesionbio.com

**SUPPORT**  
techsupport@cohesionbio.com

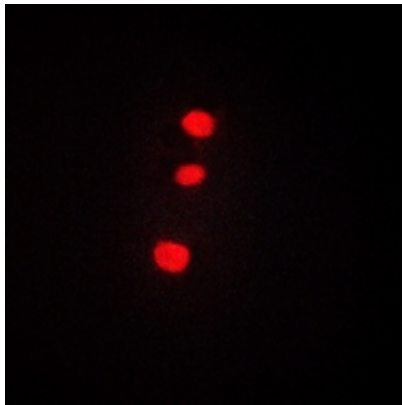
**CUSTOM**  
custom@cohesionbio.com

# Product Data Sheet

freeze/thaw cycles.



Western blot analysis of ZIC1/2/3/4/5 expression in rat brain (A) whole cell lysates. (Predicted band size: 48; 55; 50; 36; 68 kD; Observed band size: 55 kD)



Immunofluorescent analysis of ZIC1/2/3/4/5 staining in HepG2 cells. Formalin-fixed cells were permeabilized with 0.1% Triton X-100 in TBS for 5-10 minutes and blocked with 3% BSA-PBS for 30 minutes at room temperature. Cells were probed with the primary antibody in 3% BSA-PBS and incubated overnight at 4 °C in a humidified chamber. Cells were washed with PBST and incubated with a AF594-conjugated secondary antibody (red) in PBS at room temperature in the dark.

**Application key:** E- ELISA, WB- Western blot, IH- Immunohistochemistry, IF- Immunofluorescence, FC- Flow cytometry, IC- Immunocytochemistry, IP- Immunoprecipitation, CHIP- Chromatin Immunoprecipitation, EMSA- Electrophoretic Mobility Shift Assay, BL- Blocking, SE- Sandwich ELISA, CBE- Cell-based ELISA, RNAi- RNA interference

**Species reactivity key:** H- Human, M- Mouse, R- Rat, B- Bovine, C- Chicken, D- Dog, G- Goat, Mk- Monkey, P- Pig, Rb- Rabbit, S- Sheep, Z- Zebrafish

## COHESION BIOSCIENCES LIMITED

**WEB**  
[www.cohesionbio.com](http://www.cohesionbio.com)

**ORDER**  
[order@cohesionbio.com](mailto:order@cohesionbio.com)

**SUPPORT**  
[techsupport@cohesionbio.com](mailto:techsupport@cohesionbio.com)

**CUSTOM**  
[custom@cohesionbio.com](mailto:custom@cohesionbio.com)