

Anti-HLA-A/B/C Antibody

Catalog #	Source	Reactivity	Applications
CPA3628	Rabbit	H, M, R, Rb	WB
Description	Rabbit polyclonal antibody to HLA-A/B/C		
Immunogen	KLH-conjugated synthetic peptide encompassing a sequence within the center region of human HLA-A/B/C. The exact sequence is proprietary.		
Purification	The antibody was purified by immunogen affinity chromatography.		
Specificity	Recognizes endogenous levels of HLA-A/B/C protein.		
Clonality	Polyclonal		
Conjugation			
Form	Liquid in 0.42% Potassium phosphate, 0.87% Sodium chloride, pH 7.3, 30% glycerol, and 0.01% sodium azide.		
Dilution	WB (1/500 - 1/1000)		
Gene Symbol	HLA-A; HLA-B; HLA-C		
Alternative Names	HLA-A; HLAA; HLA class I histocompatibility antigen, A-68 alpha chain; Aw-68; HLA class I histocompatibility antigen, A-28 alpha chain; MHC class I antigen A*68; HLA-A; HLAA; HLA class I histocompatibility antigen, A-2 alpha chain; MHC class I antigen A*2		
Entrez Gene	3105, 3106, 3107 (Human)		
SwissProt	P01891, P01892, P04439, P05534, P10314, P10316, P13746, P16189, P18462, P30443, P30450, P30453, P30455, P30456, P30457, P30512, Q09160 (Human)		
Storage/Stability	Shipped at 4°C. Upon delivery aliquot and store at -20°C for one year. Avoid freeze/thaw cycles.		

Application key: E- ELISA, WB- Western blot, IH- Immunohistochemistry, IF- Immunofluorescence, FC- Flow cytometry, IC- Immunocytochemistry, IP- Immunoprecipitation, ChIP- Chromatin Immunoprecipitation, EMSA- Electrophoretic Mobility Shift Assay, BL- Blocking, SE- Sandwich ELISA, CBE- Cell-based ELISA, RNAi- RNA interference

Species reactivity key: H- Human, M- Mouse, R- Rat, B- Bovine, C- Chicken, D- Dog, G- Goat, Mk- Monkey, P- Pig, Rb- Rabbit, S- Sheep, Z- Zebrafish

COHESION BIOSCIENCES LIMITED

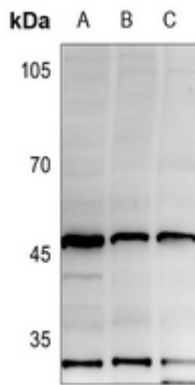
WEB
www.cohesionbio.com

ORDER
order@cohesionbio.com

SUPPORT
techsupport@cohesionbio.com

CUSTOM
custom@cohesionbio.com

Product Data Sheet



Western blot analysis of HLA-A/B/C expression in HEK293T (A), A549 (B), HepG2 (C) whole cell lysates. (Predicted band size: 40 kD; Observed band size: 46 kD)

Application key: E- ELISA, WB- Western blot, IH- Immunohistochemistry, IF- Immunofluorescence, FC- Flow cytometry, IC- Immunocytochemistry, IP- Immunoprecipitation, CHIP- Chromatin Immunoprecipitation, EMSA- Electrophoretic Mobility Shift Assay, BL- Blocking, SE- Sandwich ELISA, CBE- Cell-based ELISA, RNAi- RNA interference

Species reactivity key: H- Human, M- Mouse, R- Rat, B- Bovine, C- Chicken, D- Dog, G- Goat, Mk- Monkey, P- Pig, Rb- Rabbit, S- Sheep, Z- Zebrafish

COHESION BIOSCIENCES LIMITED

WEB

www.cohesionbio.com

ORDER

order@cohesionbio.com

SUPPORT

techsupport@cohesionbio.com

CUSTOM

custom@cohesionbio.com