

Anti-Dectin 2 Antibody

| Catalog # | Source | Reactivity | Applications |
|--------------------------|--|------------|--------------|
| CPA3577 | Rabbit | H, M, R | WB |
| Description | Rabbit polyclonal antibody to Dectin 2 | | |
| Immunogen | KLH-conjugated synthetic peptide encompassing a sequence within the center region of human Dectin 2. The exact sequence is proprietary. | | |
| Purification | The antibody was purified by immunogen affinity chromatography. | | |
| Specificity | Recognizes endogenous levels of Dectin 2 protein. | | |
| Clonality | Polyclonal | | |
| Conjugation | | | |
| Form | Liquid in 0.42% Potassium phosphate, 0.87% Sodium chloride, pH 7.3, 30% glycerol, and 0.01% sodium azide. | | |
| Dilution | WB (1/500 - 1/1000) | | |
| Gene Symbol | CLEC6A | | |
| Alternative Names | CLECSF10; DECTIN2; C-type lectin domain family 6 member A; C-type lectin superfamily member 10; Dendritic cell-associated C-type lectin 2; DC-associated C-type lectin 2; Dectin-2 | | |
| Entrez Gene | 93978 (Human); 56620 (Mouse) | | |
| SwissProt | Q6EIG7 (Human); Q9JKF4 (Mouse); D3ZWT9 (Rat) | | |
| Storage/Stability | Shipped at 4°C. Upon delivery aliquot and store at -20°C for one year. Avoid freeze/thaw cycles. | | |

Application key: E- ELISA, WB- Western blot, IH- Immunohistochemistry, IF- Immunofluorescence, FC- Flow cytometry, IC- Immunocytochemistry, IP- Immunoprecipitation, CHIP- Chromatin Immunoprecipitation, EMSA- Electrophoretic Mobility Shift Assay, BL- Blocking, SE- Sandwich ELISA, CBE- Cell-based ELISA, RNAi- RNA interference

Species reactivity key: H- Human, M- Mouse, R- Rat, B- Bovine, C- Chicken, D- Dog, G- Goat, Mk- Monkey, P- Pig, Rb- Rabbit, S- Sheep, Z- Zebrafish

COHESION BIOSCIENCES LIMITED

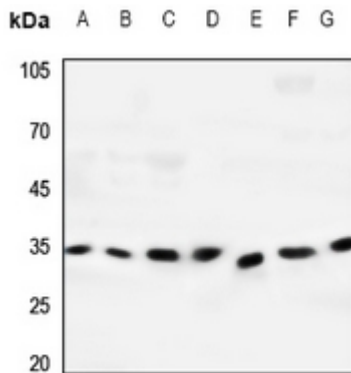
WEB
www.cohesionbio.com

ORDER
order@cohesionbio.com

SUPPORT
techsupport@cohesionbio.com

CUSTOM
custom@cohesionbio.com

Product Data Sheet



Western blot analysis of Dectin 2 expression in HEK293T (A), HeLa (B), A375 (C), mouse lung (D), mouse spleen (E), rat lung (F), rat spleen (G) whole cell lysates. (Predicted band size: 23 kD; Observed band size: 35 kD)

Application key: E- ELISA, WB- Western blot, IH- Immunohistochemistry, IF- Immunofluorescence, FC- Flow cytometry, IC- Immunocytochemistry, IP- Immunoprecipitation, CHIP- Chromatin Immunoprecipitation, EMSA- Electrophoretic Mobility Shift Assay, BL- Blocking, SE- Sandwich ELISA, CBE- Cell-based ELISA, RNAi- RNA interference

Species reactivity key: H- Human, M- Mouse, R- Rat, B- Bovine, C- Chicken, D- Dog, G- Goat, Mk- Monkey, P- Pig, Rb- Rabbit, S- Sheep, Z- Zebrafish

COHESION BIOSCIENCES LIMITED

WEB

www.cohesionbio.com

ORDER

order@cohesionbio.com

SUPPORT

techsupport@cohesionbio.com

CUSTOM

custom@cohesionbio.com