

## Anti-QSER1 Antibody

| Catalog #                | Source                                                                                                                               | Reactivity  | Applications |
|--------------------------|--------------------------------------------------------------------------------------------------------------------------------------|-------------|--------------|
| CPA3080                  | Rabbit                                                                                                                               | H, M, R, Mk | WB           |
| <b>Description</b>       | Rabbit polyclonal antibody to QSER1                                                                                                  |             |              |
| <b>Immunogen</b>         | KLH-conjugated synthetic peptide encompassing a sequence within the center region of human QSER1. The exact sequence is proprietary. |             |              |
| <b>Purification</b>      | The antibody was purified by immunogen affinity chromatography.                                                                      |             |              |
| <b>Specificity</b>       | Recognizes endogenous levels of QSER1 protein.                                                                                       |             |              |
| <b>Clonality</b>         | Polyclonal                                                                                                                           |             |              |
| <b>Conjugation</b>       |                                                                                                                                      |             |              |
| <b>Form</b>              | Liquid in 0.42% Potassium phosphate, 0.87% Sodium chloride, pH 7.3, 30% glycerol, and 0.01% sodium azide.                            |             |              |
| <b>Dilution</b>          | WB (1/500 - 1/1000)                                                                                                                  |             |              |
| <b>Gene Symbol</b>       | QSER1                                                                                                                                |             |              |
| <b>Alternative Names</b> | Glutamine and serine-rich protein 1                                                                                                  |             |              |
| <b>Entrez Gene</b>       | 79832 (Human)                                                                                                                        |             |              |
| <b>SwissProt</b>         | Q2KHR3 (Human)                                                                                                                       |             |              |
| <b>Storage/Stability</b> | Shipped at 4°C. Upon delivery aliquot and store at -20°C for one year. Avoid freeze/thaw cycles.                                     |             |              |

**Application key:** E- ELISA, WB- Western blot, IH- Immunohistochemistry, IF- Immunofluorescence, FC- Flow cytometry, IC- Immunocytochemistry, IP- Immunoprecipitation, CHIP- Chromatin Immunoprecipitation, EMSA- Electrophoretic Mobility Shift Assay, BL- Blocking, SE- Sandwich ELISA, CBE- Cell-based ELISA, RNAi- RNA interference

**Species reactivity key:** H- Human, M- Mouse, R- Rat, B- Bovine, C- Chicken, D- Dog, G- Goat, Mk- Monkey, P- Pig, Rb- Rabbit, S- Sheep, Z- Zebrafish

### COHESION BIOSCIENCES LIMITED

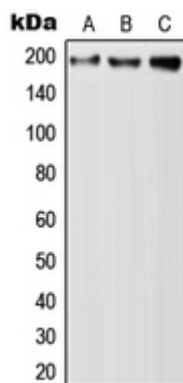
**WEB**  
[www.cohesionbio.com](http://www.cohesionbio.com)

**ORDER**  
[order@cohesionbio.com](mailto:order@cohesionbio.com)

**SUPPORT**  
[techsupport@cohesionbio.com](mailto:techsupport@cohesionbio.com)

**CUSTOM**  
[custom@cohesionbio.com](mailto:custom@cohesionbio.com)

## Product Data Sheet



Western blot analysis of QSER1 expression in A549 (A), Raw264.7 (B), PC12 (C) whole cell lysates. (Predicted band size: 189 kD; Observed band size: 200 kD)

**Application key:** E- ELISA, WB- Western blot, IH- Immunohistochemistry, IF- Immunofluorescence, FC- Flow cytometry, IC- Immunocytochemistry, IP- Immunoprecipitation, CHIP- Chromatin Immunoprecipitation, EMSA- Electrophoretic Mobility Shift Assay, BL- Blocking, SE- Sandwich ELISA, CBE- Cell-based ELISA, RNAi- RNA interference

**Species reactivity key:** H- Human, M- Mouse, R- Rat, B- Bovine, C- Chicken, D- Dog, G- Goat, Mk- Monkey, P- Pig, Rb- Rabbit, S- Sheep, Z- Zebrafish

### COHESION BIOSCIENCES LIMITED

**WEB**

[www.cohesionbio.com](http://www.cohesionbio.com)

**ORDER**

[order@cohesionbio.com](mailto:order@cohesionbio.com)

**SUPPORT**

[techsupport@cohesionbio.com](mailto:techsupport@cohesionbio.com)

**CUSTOM**

[custom@cohesionbio.com](mailto:custom@cohesionbio.com)