

Anti-ROS (Phospho-Y2114) Antibody

Catalog #	Source	Reactivity	Applications
CPA3006	Rabbit	H, M, R, B, C, P, Rb	WB
Description	Rabbit polyclonal antibody to ROS (Phospho-Y2114)		
Immunogen	KLH-conjugated synthetic phosphopeptide corresponding to residues surrounding Y2114 of human ROS protein. The exact sequence is proprietary.		
Purification	The antibody was purified by immunogen affinity chromatography.		
Specificity	Recognizes endogenous levels of ROS protein only when phosphorylated at Y2114.		
Clonality	Polyclonal		
Conjugation			
Form	Liquid in 0.42% Potassium phosphate, 0.87% Sodium chloride, pH 7.3, 30% glycerol, and 0.01% sodium azide.		
Dilution	WB (1/500 - 1/1000)		
Gene Symbol	ROS1		
Alternative Names	MCF3; ROS; Proto-oncogene tyrosine-protein kinase ROS; Proto-oncogene c-Ros; Proto-oncogene c-Ros-1; Receptor tyrosine kinase c-ros oncogene 1; c-Ros receptor tyrosine kinase		
Entrez Gene	6098 (Human); 19886 (Mouse); 25346 (Rat)		
SwissProt	P08922 (Human); Q78DX7 (Mouse); Q63132 (Rat)		
Storage/Stability	Shipped at 4°C. Upon delivery aliquot and store at -20°C for one year. Avoid freeze/thaw cycles.		

Application key: E- ELISA, WB- Western blot, IH- Immunohistochemistry, IF- Immunofluorescence, FC- Flow cytometry, IC- Immunocytochemistry, IP- Immunoprecipitation, CHIP- Chromatin Immunoprecipitation, EMSA- Electrophoretic Mobility Shift Assay, BL- Blocking, SE- Sandwich ELISA, CBE- Cell-based ELISA, RNAi- RNA interference

Species reactivity key: H- Human, M- Mouse, R- Rat, B- Bovine, C- Chicken, D- Dog, G- Goat, Mk- Monkey, P- Pig, Rb- Rabbit, S- Sheep, Z- Zebrafish

COHESION BIOSCIENCES LIMITED

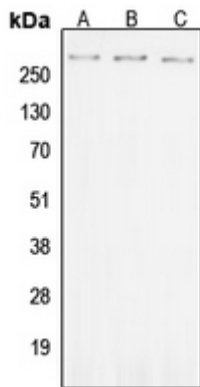
WEB
www.cohesionbio.com

ORDER
order@cohesionbio.com

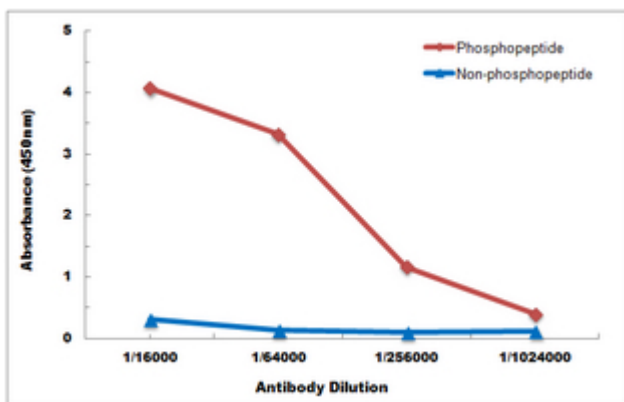
SUPPORT
techsupport@cohesionbio.com

CUSTOM
custom@cohesionbio.com

Product Data Sheet



Western blot analysis of ROS (Phospho-Y2114) expression in SKOV3A (A), Raw264.7 (B), PC12 (C) whole cell lysates. (Predicted band size: 263 kD; Observed band size: 263 kD)



Direct ELISA antibody dose-response curve using Anti-ROS (Phospho-Y2114) Antibody. Antigen (Phosphopeptide and non-phosphopeptide) concentration is 5 ug/ml. Goat Anti-Rabbit IgG (H&L) - HRP was used as the secondary antibody, and signal was developed by TMB substrate.

Application key: E- ELISA, WB- Western blot, IH- Immunohistochemistry, IF- Immunofluorescence, FC- Flow cytometry, IC- Immunocytochemistry, IP- Immunoprecipitation, CHIP- Chromatin Immunoprecipitation, EMSA- Electrophoretic Mobility Shift Assay, BL- Blocking, SE- Sandwich ELISA, CBE- Cell-based ELISA, RNAi- RNA interference

Species reactivity key: H- Human, M- Mouse, R- Rat, B- Bovine, C- Chicken, D- Dog, G- Goat, Mk- Monkey, P- Pig, Rb- Rabbit, S- Sheep, Z- Zebrafish

COHESION BIOSCIENCES LIMITED

WEB

www.cohesionbio.com

ORDER

order@cohesionbio.com

SUPPORT

techsupport@cohesionbio.com

CUSTOM

custom@cohesionbio.com