

Anti-DNAJB11 Antibody

Catalog #	Source	Reactivity	Applications
CPA2683	Rabbit	H, M, R	WB, IH
Description	Rabbit polyclonal antibody to DNAJB11		
Immunogen	KLH-conjugated synthetic peptide encompassing a sequence within the center region of human DNAJB11. The exact sequence is proprietary.		
Purification	The antibody was purified by immunogen affinity chromatography.		
Specificity	Recognizes endogenous levels of DNAJB11 protein.		
Clonality	Polyclonal		
Conjugation			
Form	Liquid in 0.42% Potassium phosphate, 0.87% Sodium chloride, pH 7.3, 30% glycerol, and 0.01% sodium azide.		
Dilution	WB (1/500 - 1/1000), IH (1/50 - 1/100)		
Gene Symbol	DNAJB11		
Alternative Names	EDJ; ERJ3; HDJ9; DnaJ homolog subfamily B member 11; APOBEC1-binding protein 2; ABBP-2; DnaJ protein homolog 9; ER-associated DNAJ; ER-associated Hsp40 co-chaperone; Endoplasmic reticulum DNA J domain-containing protein 3; ER-resident protein ERdj3; ERdj3; ERj3p; HEDJ; Human DnaJ protein 9; hDj-9; PWP1-interacting protein 4		
Entrez Gene	51726 (Human); 67838 (Mouse); 360734 (Rat)		
SwissProt	Q9UBS4 (Human); Q99KV1 (Mouse); Q6TUG0 (Rat)		
Storage/Stability	Shipped at 4°C. Upon delivery aliquot and store at -20°C for one year. Avoid freeze/thaw cycles.		

Application key: E- ELISA, WB- Western blot, IH- Immunohistochemistry, IF- Immunofluorescence, FC- Flow cytometry, IC- Immunocytochemistry, IP- Immunoprecipitation, CHIP- Chromatin Immunoprecipitation, EMSA- Electrophoretic Mobility Shift Assay, BL- Blocking, SE- Sandwich ELISA, CBE- Cell-based ELISA, RNAi- RNA interference

Species reactivity key: H- Human, M- Mouse, R- Rat, B- Bovine, C- Chicken, D- Dog, G- Goat, Mk- Monkey, P- Pig, Rb- Rabbit, S- Sheep, Z- Zebrafish

COHESION BIOSCIENCES LIMITED

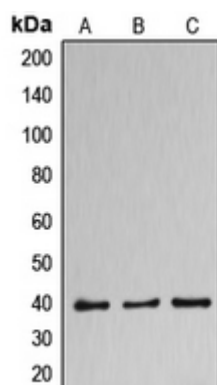
WEB
www.cohesionbio.com

ORDER
order@cohesionbio.com

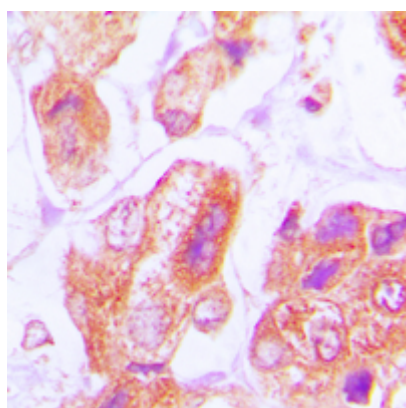
SUPPORT
techsupport@cohesionbio.com

CUSTOM
custom@cohesionbio.com

Product Data Sheet



Western blot analysis of DNAJB11 expression in HuvEc (A), NCIH460 (B), MCF7 (C) whole cell lysates. (Predicted band size: 40 kD; Observed band size: 40 kD)



Immunohistochemical analysis of DNAJB11 staining in human lung cancer formalin fixed paraffin embedded tissue section. The section was pre-treated using heat mediated antigen retrieval with sodium citrate buffer (pH 6.0). The section was then incubated with the antibody at room temperature and detected using an HRP conjugated compact polymer system. DAB was used as the chromogen. The section was then counterstained with haematoxylin and mounted with DPX.

Application key: E- ELISA, WB- Western blot, IH- Immunohistochemistry, IF- Immunofluorescence, FC- Flow cytometry, IC- Immunocytochemistry, IP- Immunoprecipitation, CHIP- Chromatin Immunoprecipitation, EMSA- Electrophoretic Mobility Shift Assay, BL- Blocking, SE- Sandwich ELISA, CBE- Cell-based ELISA, RNAi- RNA interference

Species reactivity key: H- Human, M- Mouse, R- Rat, B- Bovine, C- Chicken, D- Dog, G- Goat, Mk- Monkey, P- Pig, Rb- Rabbit, S- Sheep, Z- Zebrafish

COHESION BIOSCIENCES LIMITED

WEB

www.cohesionbio.com

ORDER

order@cohesionbio.com

SUPPORT

techsupport@cohesionbio.com

CUSTOM

custom@cohesionbio.com