

Anti-TCP1 epsilon Antibody

Catalog #	Source	Reactivity	Applications
CPA2557	Rabbit	H, M, R, Mk, P	WB
Description	Rabbit polyclonal antibody to TCP1 epsilon		
Immunogen	KLH-conjugated synthetic peptide encompassing a sequence within the center region of human TCP1 epsilon. The exact sequence is proprietary.		
Purification	The antibody was purified by immunogen affinity chromatography.		
Specificity	Recognizes endogenous levels of TCP1 epsilon protein.		
Clonality	Polyclonal		
Conjugation			
Form	Liquid in 0.42% Potassium phosphate, 0.87% Sodium chloride, pH 7.3, 30% glycerol, and 0.01% sodium azide.		
Dilution	WB (1/500 - 1/1000)		
Gene Symbol	CCT5		
Alternative Names	CCTE; KIAA0098; T-complex protein 1 subunit epsilon; TCP-1-epsilon; CCT-epsilon		
Entrez Gene	22948 (Human); 12465 (Mouse); 294864 (Rat)		
SwissProt	P48643 (Human); P80316 (Mouse); Q68FQ0 (Rat)		
Storage/Stability	Shipped at 4°C. Upon delivery aliquot and store at -20°C for one year. Avoid freeze/thaw cycles.		

Application key: E- ELISA, WB- Western blot, IH- Immunohistochemistry, IF- Immunofluorescence, FC- Flow cytometry, IC- Immunocytochemistry, IP- Immunoprecipitation, CHIP- Chromatin Immunoprecipitation, EMSA- Electrophoretic Mobility Shift Assay, BL- Blocking, SE- Sandwich ELISA, CBE- Cell-based ELISA, RNAi- RNA interference

Species reactivity key: H- Human, M- Mouse, R- Rat, B- Bovine, C- Chicken, D- Dog, G- Goat, Mk- Monkey, P- Pig, Rb- Rabbit, S- Sheep, Z- Zebrafish

COHESION BIOSCIENCES LIMITED

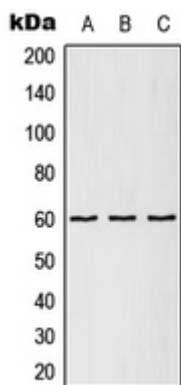
WEB
www.cohesionbio.com

ORDER
order@cohesionbio.com

SUPPORT
techsupport@cohesionbio.com

CUSTOM
custom@cohesionbio.com

Product Data Sheet



Western blot analysis of TCP1 epsilon expression in A431 (A), Raw264.7 (B), H9C2 (C) whole cell lysates. (Predicted band size: 49; 59 kD; Observed band size: 60 kD)

Application key: E- ELISA, WB- Western blot, IH- Immunohistochemistry, IF- Immunofluorescence, FC- Flow cytometry, IC- Immunocytochemistry, IP- Immunoprecipitation, CHIP- Chromatin Immunoprecipitation, EMSA- Electrophoretic Mobility Shift Assay, BL- Blocking, SE- Sandwich ELISA, CBE- Cell-based ELISA, RNAi- RNA interference

Species reactivity key: H- Human, M- Mouse, R- Rat, B- Bovine, C- Chicken, D- Dog, G- Goat, Mk- Monkey, P- Pig, Rb- Rabbit, S- Sheep, Z- Zebrafish

COHESION BIOSCIENCES LIMITED

WEB

www.cohesionbio.com

ORDER

order@cohesionbio.com

SUPPORT

techsupport@cohesionbio.com

CUSTOM

custom@cohesionbio.com