

Anti-LMTK2 Antibody

Catalog #	Source	Reactivity	Applications
CPA2552	Rabbit	H	WB, IH, IF/IC
Description	Rabbit polyclonal antibody to LMTK2		
Immunogen	KLH-conjugated synthetic peptide encompassing a sequence within the center region of human LMTK2. The exact sequence is proprietary.		
Purification	The antibody was purified by immunogen affinity chromatography.		
Specificity	Recognizes endogenous levels of LMTK2 protein.		
Clonality	Polyclonal		
Conjugation			
Form	Liquid in 0.42% Potassium phosphate, 0.87% Sodium chloride, pH 7.3, 30% glycerol, and 0.01% sodium azide.		
Dilution	WB (1/500 - 1/1000), IH (1/50 - 1/100), IF/IC (1/50 - 1/200)		
Gene Symbol	LMTK2		
Alternative Names	AATYK2; BREK; KIAA1079; KPI2; LMR2; Serine/threonine-protein kinase LMTK2; Apoptosis-associated tyrosine kinase 2; Brain-enriched kinase; hBREK; CDK5/p35-regulated kinase; CPRK; Kinase/phosphatase/inhibitor 2; Lemur tyrosine kinase 2; Serine/threonine-protein kinase KPI-2		
Entrez Gene	22853 (Human)		
SwissProt	Q8IWU2 (Human)		
Storage/Stability	Shipped at 4°C. Upon delivery aliquot and store at -20°C for one year. Avoid freeze/thaw cycles.		

Application key: E- ELISA, WB- Western blot, IH- Immunohistochemistry, IF- Immunofluorescence, FC- Flow cytometry, IC- Immunocytochemistry, IP- Immunoprecipitation, CHIP- Chromatin Immunoprecipitation, EMSA- Electrophoretic Mobility Shift Assay, BL- Blocking, SE- Sandwich ELISA, CBE- Cell-based ELISA, RNAi- RNA interference

Species reactivity key: H- Human, M- Mouse, R- Rat, B- Bovine, C- Chicken, D- Dog, G- Goat, Mk- Monkey, P- Pig, Rb- Rabbit, S- Sheep, Z- Zebrafish

COHESION BIOSCIENCES LIMITED

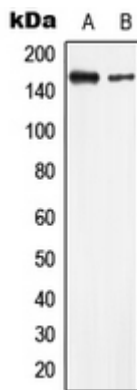
WEB
www.cohesionbio.com

ORDER
order@cohesionbio.com

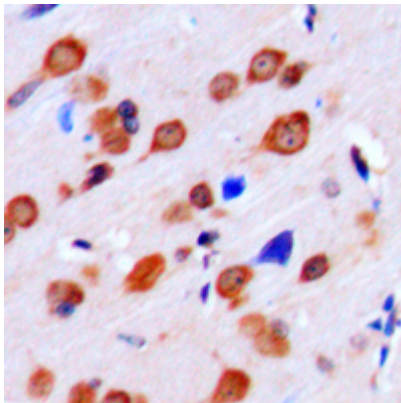
SUPPORT
techsupport@cohesionbio.com

CUSTOM
custom@cohesionbio.com

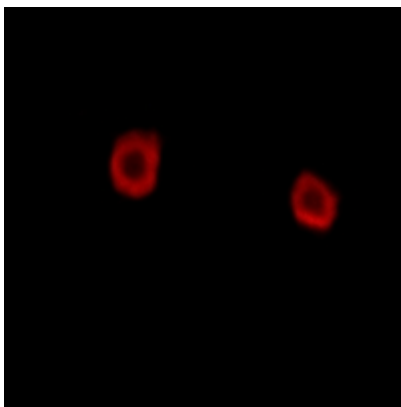
Product Data Sheet



Western blot analysis of LMTK2 expression in HeLa (A), HEK293T (B) whole cell lysates. (Predicted band size: 164 kD; Observed band size: 164 kD)



Immunohistochemical analysis of LMTK2 staining in human brain formalin fixed paraffin embedded tissue section. The section was pre-treated using heat mediated antigen retrieval with sodium citrate buffer (pH 6.0). The section was then incubated with the antibody at room temperature and detected using an HRP conjugated compact polymer system. DAB was used as the chromogen. The section was then counterstained with haematoxylin and mounted with DPX.



Immunofluorescent analysis of LMTK2 staining in HepG2 cells. Formalin-fixed cells were permeabilized with 0.1% Triton X-100 in TBS for 5-10 minutes and blocked with 3% BSA-PBS for 30 minutes at room temperature. Cells were probed with the primary antibody in 3% BSA-PBS and incubated overnight at 4 °C in a humidified chamber. Cells were washed with PBST and incubated with a AF594-conjugated secondary antibody (red) in PBS at room temperature in the dark.

Application key: E- ELISA, WB- Western blot, IH- Immunohistochemistry, IF- Immunofluorescence, FC- Flow cytometry, IC- Immunocytochemistry, IP- Immunoprecipitation, CHIP- Chromatin Immunoprecipitation, EMSA- Electrophoretic Mobility Shift Assay, BL- Blocking, SE- Sandwich ELISA, CBE- Cell-based ELISA, RNAi- RNA interference

Species reactivity key: H- Human, M- Mouse, R- Rat, B- Bovine, C- Chicken, D- Dog, G- Goat, Mk- Monkey, P- Pig, Rb- Rabbit, S- Sheep, Z- Zebrafish

COHESION BIOSCIENCES LIMITED

WEB

www.cohesionbio.com

ORDER

order@cohesionbio.com

SUPPORT

techsupport@cohesionbio.com

CUSTOM

custom@cohesionbio.com