

Anti-CUGBP1 Antibody

Catalog #	Source	Reactivity	Applications
CPA2501	Rabbit	H, M, R, B, C, Z	WB, IH, IP
Description	Rabbit polyclonal antibody to CUGBP1		
Immunogen	KLH-conjugated synthetic peptide encompassing a sequence within the center region of human CUGBP1. The exact sequence is proprietary.		
Purification	The antibody was purified by immunogen affinity chromatography.		
Specificity	Recognizes endogenous levels of CUGBP1 protein.		
Clonality	Polyclonal		
Conjugation			
Form	Liquid in 0.42% Potassium phosphate, 0.87% Sodium chloride, pH 7.3, 30% glycerol, and 0.01% sodium azide.		
Dilution	WB (1/500 - 1/1000), IH (1/50 - 1/200), IP (1/10 - 1/50)		
Gene Symbol	CELF1		
Alternative Names	BRUNOL2; CUGBP; CUGBP1; NAB50; CUGBP Elav-like family member 1; CELF-1; 50 kDa nuclear polyadenylated RNA-binding protein; Bruno-like protein 2; CUG triplet repeat RNA-binding protein 1; CUG-BP1; CUG-BP- and ETR-3-like factor 1; Deadenylation factor CUG-BP; Embryo deadenylation element-binding protein homolog; EDEN-BP homolog; RNA-binding protein BRUNOL-2		
Entrez Gene	10658 (Human); 13046 (Mouse); 362160 (Rat)		
SwissProt	Q92879 (Human); P28659 (Mouse); Q4QQT3 (Rat)		
Storage/Stability	Shipped at 4°C. Upon delivery aliquot and store at -20°C for one year. Avoid freeze/thaw cycles.		

Application key: E- ELISA, WB- Western blot, IH- Immunohistochemistry, IF- Immunofluorescence, FC- Flow cytometry, IC- Immunocytochemistry, IP- Immunoprecipitation, ChIP- Chromatin Immunoprecipitation, EMSA- Electrophoretic Mobility Shift Assay, BL- Blocking, SE- Sandwich ELISA, CBE- Cell-based ELISA, RNAi- RNA interference

Species reactivity key: H- Human, M- Mouse, R- Rat, B- Bovine, C- Chicken, D- Dog, G- Goat, Mk- Monkey, P- Pig, Rb- Rabbit, S- Sheep, Z- Zebrafish

COHESION BIOSCIENCES LIMITED

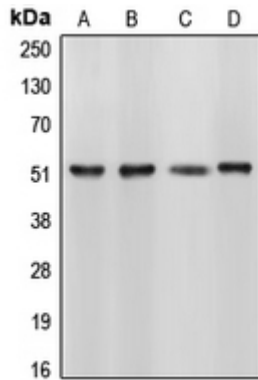
WEB
www.cohesionbio.com

ORDER
order@cohesionbio.com

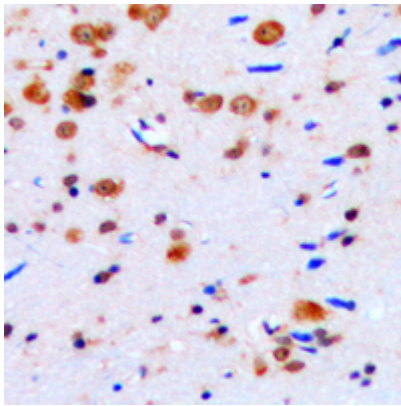
SUPPORT
techsupport@cohesionbio.com

CUSTOM
custom@cohesionbio.com

Product Data Sheet



Western blot analysis of CUGBP1 expression in HL60 (A), HeLa (B), NIH3T3 (C), Sol8 (D) whole cell lysates. (Predicted band size: 50; 51; 52; 55 kD; Observed band size: 52 kD)



Immunohistochemical analysis of CUGBP1 staining in human brain formalin fixed paraffin embedded tissue section. The section was pre-treated using heat mediated antigen retrieval with sodium citrate buffer (pH 6.0). The section was then incubated with the antibody at room temperature and detected using an HRP conjugated compact polymer system. DAB was used as the chromogen. The section was then counterstained with haematoxylin and mounted with DPX.

Application key: E- ELISA, WB- Western blot, IH- Immunohistochemistry, IF- Immunofluorescence, FC- Flow cytometry, IC- Immunocytochemistry, IP- Immunoprecipitation, CHIP- Chromatin Immunoprecipitation, EMSA- Electrophoretic Mobility Shift Assay, BL- Blocking, SE- Sandwich ELISA, CBE- Cell-based ELISA, RNAi- RNA interference

Species reactivity key: H- Human, M- Mouse, R- Rat, B- Bovine, C- Chicken, D- Dog, G- Goat, Mk- Monkey, P- Pig, Rb- Rabbit, S- Sheep, Z- Zebrafish

COHESION BIOSCIENCES LIMITED

WEB

www.cohesionbio.com

ORDER

order@cohesionbio.com

SUPPORT

techsupport@cohesionbio.com

CUSTOM

custom@cohesionbio.com