

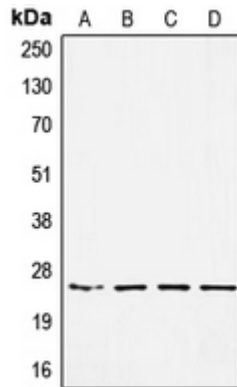
## Anti-SSX-pan Antibody

Catalog #	Source	Reactivity	Applications
CPA2107	Rabbit	H	WB, IH
<b>Description</b>	Rabbit polyclonal antibody to SSX-pan		
<b>Immunogen</b>	KLH-conjugated synthetic peptide encompassing a sequence within the C-term region of human SSX-pan. The exact sequence is proprietary.		
<b>Purification</b>	The antibody was purified by immunogen affinity chromatography.		
<b>Specificity</b>	Recognizes endogenous levels of SSX-pan protein.		
<b>Clonality</b>	Polyclonal		
<b>Conjugation</b>			
<b>Form</b>	Liquid in 0.42% Potassium phosphate, 0.87% Sodium chloride, pH 7.3, 30% glycerol, and 0.01% sodium azide.		
<b>Dilution</b>	WB (1/500 - 1/1000), IH (1/50 - 1/100)		
<b>Gene Symbol</b>	SSX1; SSX2; SSX3; SSX4; SSX5; SSX6; SSX7; SSX8; SSX9		
<b>Alternative Names</b>	SSX1; Protein SSX1; Cancer/testis antigen 5.1; CT5.1; Synovial sarcoma, X breakpoint 1; SSX2; SSX2A; SSX2B; Protein SSX2; Cancer/testis antigen 5.2; CT5.2; Synovial sarcoma, X breakpoint 2; Tumor antigen HOM-MEL-40; SSX3; Protein SSX3; Cancer/testis antigen 5.3; CT5.3; SSX4; SSX4A; SSX4B; Protein SSX4; Cancer/testis antigen 5.4; CT5.4; SSX5; Protein SSX5; SSX6; Putative protein SSX6; SSX7; Protein SSX7; SSX8; Protein SSX8; SSX9; Protein SSX9		
<b>Entrez Gene</b>	6756, 6757, 727837, 10214, 548313, 6759, 6758, 280658 (Human)		
<b>SwissProt</b>	Q16384, Q16385, Q99909, O60224, O60225, Q7RTT6, Q7RTT5, Q7RTT4, Q7RTT3 (Human)		
<b>Storage/Stability</b>	Shipped at 4°C. Upon delivery aliquot and store at -20°C for one year. Avoid		
<b>Application key:</b>	E- ELISA, WB- Western blot, IH- Immunohistochemistry, IF- Immunofluorescence, FC- Flow cytometry, IC- Immunocytochemistry, IP- Immunoprecipitation, ChIP- Chromatin Immunoprecipitation, EMSA- Electrophoretic Mobility Shift Assay, BL- Blocking, SE- Sandwich ELISA, CBE- Cell-based ELISA, RNAi- RNA interference		
<b>Species reactivity key:</b>	H- Human, M- Mouse, R- Rat, B- Bovine, C- Chicken, D- Dog, G- Goat, Mk- Monkey, P- Pig, Rb- Rabbit, S- Sheep, Z- Zebrafish		

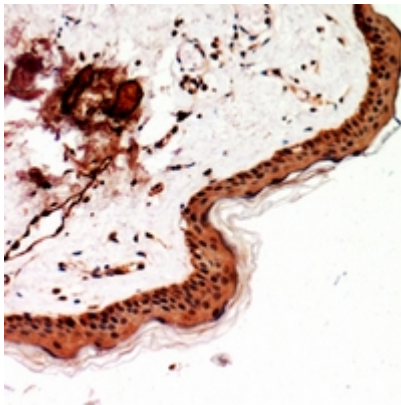
### COHESION BIOSCIENCES LIMITED

# Product Data Sheet

freeze/thaw cycles.



Western blot analysis of SSX-pan expression in HEK293 (A), MDAMB453 (B), SW480 (C), A549 (D) whole cell lysates. (Predicted band size: 21 kD; Observed band size: 25 kD)



Immunohistochemical analysis of SSX-pan staining in human skin formalin fixed paraffin embedded tissue section. The section was pre-treated using heat mediated antigen retrieval with sodium citrate buffer (pH 6.0). The section was then incubated with the antibody at room temperature and detected using an HRP conjugated compact polymer system. DAB was used as the chromogen. The section was then counterstained with haematoxylin and mounted with DPX.

**Application key:** E- ELISA, WB- Western blot, IH- Immunohistochemistry, IF- Immunofluorescence, FC- Flow cytometry, IC- Immunocytochemistry, IP- Immunoprecipitation, CHIP- Chromatin Immunoprecipitation, EMSA- Electrophoretic Mobility Shift Assay, BL- Blocking, SE- Sandwich ELISA, CBE- Cell-based ELISA, RNAi- RNA interference

**Species reactivity key:** H- Human, M- Mouse, R- Rat, B- Bovine, C- Chicken, D- Dog, G- Goat, Mk- Monkey, P- Pig, Rb- Rabbit, S- Sheep, Z- Zebrafish

## COHESION BIOSCIENCES LIMITED

**WEB**

[www.cohesionbio.com](http://www.cohesionbio.com)

**ORDER**

[order@cohesionbio.com](mailto:order@cohesionbio.com)

**SUPPORT**

[techsupport@cohesionbio.com](mailto:techsupport@cohesionbio.com)

**CUSTOM**

[custom@cohesionbio.com](mailto:custom@cohesionbio.com)