

Anti-PFKFB1/4 Antibody

Catalog #	Source	Reactivity	Applications
CPA1875	Rabbit	H, M, R, B, C, Mk, Z	WB
Description	Rabbit polyclonal antibody to PFKFB1/4		
Immunogen	KLH-conjugated synthetic peptide encompassing a sequence within the center region of human PFKFB1/4. The exact sequence is proprietary.		
Purification	The antibody was purified by immunogen affinity chromatography.		
Specificity	Recognizes endogenous levels of PFKFB1/4 protein.		
Clonality	Polyclonal		
Conjugation			
Form	Liquid in 0.42% Potassium phosphate, 0.87% Sodium chloride, pH 7.3, 30% glycerol, and 0.01% sodium azide.		
Dilution	WB (1/500 - 1/1000)		
Gene Symbol	PFKFB1; PFKFB4		
Alternative Names	PFKFB1; F6PK; PFRX; 6-phosphofructo-2-kinase/fructose-2,6-bisphosphatase 1; 6PF-2-K/Fru-2,6-P2ase 1; PFK/FBPase 1; 6PF-2-K/Fru-2,6-P2ase liver isozyme; PFKFB4; 6-phosphofructo-2-kinase/fructose-2,6-bisphosphatase 4; 6PF-2-K/Fru-2,6-P2ase 4; PFK/FBPase 4;		
Entrez Gene	5207, 5210 (Human); 18639, 270198 (Mouse); 24638, 54283 (Rat)		
SwissProt	P16118, Q16877 (Human); P70266, Q6DTY7 (Mouse); P07953, P25114 (Rat)		
Storage/Stability	Shipped at 4°C. Upon delivery aliquot and store at -20°C for one year. Avoid freeze/thaw cycles.		

Application key: E- ELISA, WB- Western blot, IH- Immunohistochemistry, IF- Immunofluorescence, FC- Flow cytometry, IC- Immunocytochemistry, IP- Immunoprecipitation, ChIP- Chromatin Immunoprecipitation, EMSA- Electrophoretic Mobility Shift Assay, BL- Blocking, SE- Sandwich ELISA, CBE- Cell-based ELISA, RNAi- RNA interference

Species reactivity key: H- Human, M- Mouse, R- Rat, B- Bovine, C- Chicken, D- Dog, G- Goat, Mk- Monkey, P- Pig, Rb- Rabbit, S- Sheep, Z- Zebrafish

COHESION BIOSCIENCES LIMITED

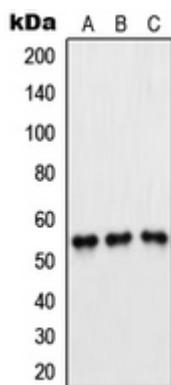
WEB
www.cohesionbio.com

ORDER
order@cohesionbio.com

SUPPORT
techsupport@cohesionbio.com

CUSTOM
custom@cohesionbio.com

Product Data Sheet



Western blot analysis of PFKFB1/4 expression in Jurkat (A), H1299 (B), HeLa (C) whole cell lysates. (Predicted band size: 54; 54 kD; Observed band size: 55 kD)

Application key: E- ELISA, WB- Western blot, IH- Immunohistochemistry, IF- Immunofluorescence, FC- Flow cytometry, IC- Immunocytochemistry, IP- Immunoprecipitation, CHIP- Chromatin Immunoprecipitation, EMSA- Electrophoretic Mobility Shift Assay, BL- Blocking, SE- Sandwich ELISA, CBE- Cell-based ELISA, RNAi- RNA interference

Species reactivity key: H- Human, M- Mouse, R- Rat, B- Bovine, C- Chicken, D- Dog, G- Goat, Mk- Monkey, P- Pig, Rb- Rabbit, S- Sheep, Z- Zebrafish

COHESION BIOSCIENCES LIMITED

WEB

www.cohesionbio.com

ORDER

order@cohesionbio.com

SUPPORT

techsupport@cohesionbio.com

CUSTOM

custom@cohesionbio.com