

## Anti-IL-4 Antibody

| Catalog #                | Source  | Reactivity  | Applications |
|--------------------------|---|-------------|--------------|
| CPA1590                  | Rabbit  | H, M, R, Mk | WB           |
| <b>Description</b>       | Rabbit polyclonal antibody to IL-4  |             |              |
| <b>Immunogen</b>         | KLH-conjugated synthetic peptide encompassing a sequence within the C-term region of human IL-4. The exact sequence is proprietary. |             |              |
| <b>Purification</b>      | The antibody was purified by immunogen affinity chromatography.   |             |              |
| <b>Specificity</b>       | Recognizes endogenous levels of IL-4 protein.   |             |              |
| <b>Clonality</b>         | Polyclonal  |             |              |
| <b>Conjugation</b>       |   |             |              |
| <b>Form</b>              | Liquid in 0.42% Potassium phosphate, 0.87% Sodium chloride, pH 7.3, 30% glycerol, and 0.01% sodium azide.                           |             |              |
| <b>Dilution</b>          | WB (1/500 - 1/1000)   |             |              |
| <b>Gene Symbol</b>       | IL4   |             |              |
| <b>Alternative Names</b> | Interleukin-4; IL-4; B-cell stimulatory factor 1; BSF-1; Binetrakin; Lymphocyte stimulatory factor 1; Pitrakinra                    |             |              |
| <b>Entrez Gene</b>       | 3565 (Human); 16189 (Mouse); 287287 (Rat)   |             |              |
| <b>SwissProt</b>         | P05112 (Human); P07750 (Mouse); P20096 (Rat)  |             |              |
| <b>Storage/Stability</b> | Shipped at 4°C. Upon delivery aliquot and store at -20°C for one year. Avoid freeze/thaw cycles.                                    |             |              |

**Application key:** E- ELISA, WB- Western blot, IH- Immunohistochemistry, IF- Immunofluorescence, FC- Flow cytometry, IC- Immunocytochemistry, IP- Immunoprecipitation, CHIP- Chromatin Immunoprecipitation, EMSA- Electrophoretic Mobility Shift Assay, BL- Blocking, SE- Sandwich ELISA, CBE- Cell-based ELISA, RNAi- RNA interference

**Species reactivity key:** H- Human, M- Mouse, R- Rat, B- Bovine, C- Chicken, D- Dog, G- Goat, Mk- Monkey, P- Pig, Rb- Rabbit, S- Sheep, Z- Zebrafish

### COHESION BIOSCIENCES LIMITED

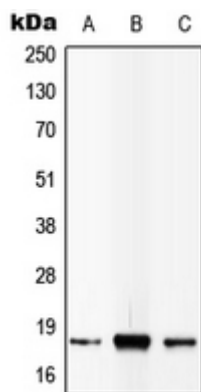
**WEB**  
[www.cohesionbio.com](http://www.cohesionbio.com)

**ORDER**  
[order@cohesionbio.com](mailto:order@cohesionbio.com)

**SUPPORT**  
[techsupport@cohesionbio.com](mailto:techsupport@cohesionbio.com)

**CUSTOM**  
[custom@cohesionbio.com](mailto:custom@cohesionbio.com)

## Product Data Sheet



Western blot analysis of IL-4 expression in MCF7 (A), SP2/O (B), PC12 (C) whole cell lysates. (Predicted band size: 17 kD; Observed band size: 18 kD)

**Application key:** E- ELISA, WB- Western blot, IH- Immunohistochemistry, IF- Immunofluorescence, FC- Flow cytometry, IC- Immunocytochemistry, IP- Immunoprecipitation, CHIP- Chromatin Immunoprecipitation, EMSA- Electrophoretic Mobility Shift Assay, BL- Blocking, SE- Sandwich ELISA, CBE- Cell-based ELISA, RNAi- RNA interference

**Species reactivity key:** H- Human, M- Mouse, R- Rat, B- Bovine, C- Chicken, D- Dog, G- Goat, Mk- Monkey, P- Pig, Rb- Rabbit, S- Sheep, Z- Zebrafish

### COHESION BIOSCIENCES LIMITED

**WEB**

[www.cohesionbio.com](http://www.cohesionbio.com)

**ORDER**

[order@cohesionbio.com](mailto:order@cohesionbio.com)

**SUPPORT**

[techsupport@cohesionbio.com](mailto:techsupport@cohesionbio.com)

**CUSTOM**

[custom@cohesionbio.com](mailto:custom@cohesionbio.com)