

Anti-IGF1 Receptor (Phospho-Y1165/Y1166) Antibody

Catalog #	Source	Reactivity	Applications
CPA1578	Rabbit	H, M, R, B, C, Z	WB, IH
Description	Rabbit polyclonal antibody to IGF1 Receptor (Phospho-Y1165/Y1166)		
Immunogen	KLH-conjugated synthetic phosphopeptide corresponding to residues surrounding Y1165/Y1166 of human IGF1 Receptor protein. The exact sequence is proprietary.		
Purification	The antibody was purified by immunogen affinity chromatography.		
Specificity	Recognizes endogenous levels of IGF1 Receptor protein only when phosphorylated at Y1165/Y1166.		
Clonality	Polyclonal		
Conjugation			
Form	Liquid in 0.42% Potassium phosphate, 0.87% Sodium chloride, pH 7.3, 30% glycerol, and 0.01% sodium azide.		
Dilution	WB (1/500 - 1/1000), IH (1/50 - 1/100)		
Gene Symbol	IGF1R		
Alternative Names	Insulin-like growth factor 1 receptor; Insulin-like growth factor I receptor; IGF-I receptor; CD221		
Entrez Gene	3480 (Human); 16001 (Mouse); 25718 (Rat)		
SwissProt	P08069 (Human); Q60751 (Mouse); P24062 (Rat)		
Storage/Stability	Shipped at 4°C. Upon delivery aliquot and store at -20°C for one year. Avoid freeze/thaw cycles.		

Application key: E- ELISA, WB- Western blot, IH- Immunohistochemistry, IF- Immunofluorescence, FC- Flow cytometry, IC- Immunocytochemistry, IP- Immunoprecipitation, CHIP- Chromatin Immunoprecipitation, EMSA- Electrophoretic Mobility Shift Assay, BL- Blocking, SE- Sandwich ELISA, CBE- Cell-based ELISA, RNAi- RNA interference

Species reactivity key: H- Human, M- Mouse, R- Rat, B- Bovine, C- Chicken, D- Dog, G- Goat, Mk- Monkey, P- Pig, Rb- Rabbit, S- Sheep, Z- Zebrafish

COHESION BIOSCIENCES LIMITED

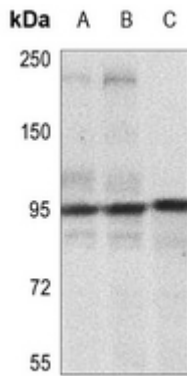
WEB
www.cohesionbio.com

ORDER
order@cohesionbio.com

SUPPORT
techsupport@cohesionbio.com

CUSTOM
custom@cohesionbio.com

Product Data Sheet

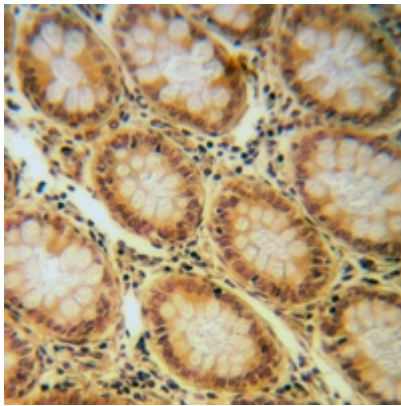


Western blot analysis of IGF1 Receptor

(Phospho-Y1165/Y1166) expression in MCF7 (A),

MCF7-insulin-15min (B), A2780 (C) whole cell lysates.

(Predicted band size: 154 kD; Observed band size: 95; 200 kD)



Immunohistochemical analysis of IGF1 Receptor

(Phospho-Y1165/Y1166) staining in human colorectal cancer

formalin fixed paraffin embedded tissue section. The section

was pre-treated using heat mediated antigen retrieval with

sodium citrate buffer (pH 6.0). The section was then incubated

with the antibody at room temperature and detected using an

HRP conjugated compact polymer system. DAB was used as

the chromogen. The section was then counterstained with

haematoxylin and mounted with DPX.

Application key: E- ELISA, WB- Western blot, IH- Immunohistochemistry, IF- Immunofluorescence, FC- Flow cytometry, IC- Immunocytochemistry, IP- Immunoprecipitation, CHIP- Chromatin Immunoprecipitation, EMSA- Electrophoretic Mobility Shift Assay, BL- Blocking, SE- Sandwich ELISA, CBE- Cell-based ELISA, RNAi- RNA interference

Species reactivity key: H- Human, M- Mouse, R- Rat, B- Bovine, C- Chicken, D- Dog, G- Goat, Mk- Monkey, P- Pig, Rb- Rabbit, S- Sheep, Z- Zebrafish

COHESION BIOSCIENCES LIMITED

WEB

www.cohesionbio.com

ORDER

order@cohesionbio.com

SUPPORT

techsupport@cohesionbio.com

CUSTOM

custom@cohesionbio.com